



Price
£350,000

Freehold

3x  2x  2x 

**Orchard Close,
Wingham, Canterbury,
Kent, CT3**

OVER 60?

Secure this property
for up to **59% less!**

Wards
Helping you move forwards



Main features

- Chain free!
- Large plot
- Garage and off road parking
- Desirable village of Wingham with easy access into Canterbury, Sandwich and Dover
- Opportunity to be improved and updated

Accommodation

GROUND FLOOR

Entrance Hall

Lounge: 18'1 x 11'6 (5.52m x 3.51m)

Kitchen : 13'4 x 6'2 (4.07m x 1.88m)

Shower Room : 6'0 x 4'4 (1.83m x 1.32m)

Separate Toilet

Dining Room : 11'5 x 10'2 (3.48m x 3.10m)

FIRST FLOOR

Landing

Bedroom 1 : 12'5 x 10'1 (3.79m x 3.08m)

Bedroom 2 : 11'6 x 9'4 (3.51m x 2.85m)

Bedroom 3 : 8'3 x 8'2 (2.52m x 2.49m)

Bathroom : 8'0 x 5'1 (2.44m x 1.55m)

OUTSIDE

Front Garden

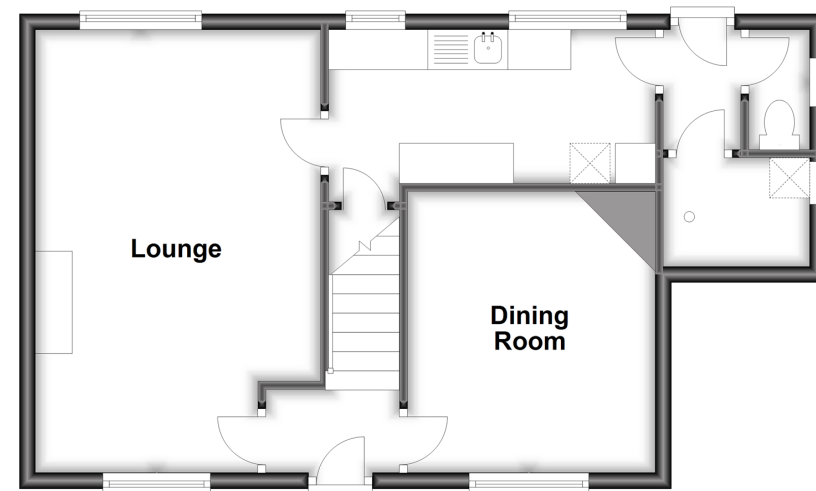
Rear Garden

Garage

Off Road Parking

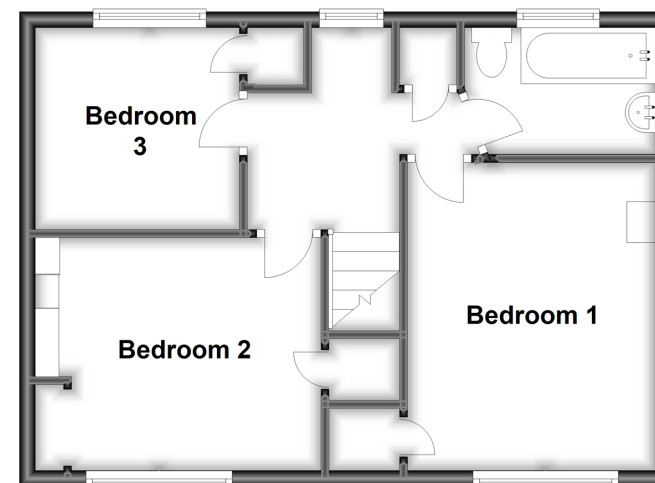
Ground Floor

Approx. 48.5 sq. metres (522.5 sq. feet)



First Floor

Approx. 42.8 sq. metres (461.1 sq. feet)



Call Canterbury - 01227 766669 ■ wardsofkent.co.uk

- Legal advice should be taken to verify fixtures/fittings, planning, alterations and/or lease details
- Appliances & services are untested, dimensions are approximate and floor plans are not to scale
- Through a Homewise Home For Life Plan people aged 60+ can secure this property for up to 59% less, by purchasing a Lifetime Lease.



10348041/20230406/MW/TD