



OVER 60?

Secure this property
for up to **59% less!**

Price
£425,000

Freehold

3x  1x  2x 

**Oxford Road,
Canterbury, Kent, CT1**

Wards
Helping you move forwards



Main features

- Handsome period home close to the city centre
- Spacious throughout
- Short distance to Canterbury East train station
- Potential for further reconfiguration subject to obtaining the correct permission

Accommodation

GROUND FLOOR

Entrance Hall
 Lounge/Diner: 26'7 x 12'2 (8.11m x 3.71m)
 Lean-to: 6'8 x 6'6 (2.03m x 1.98m)
 Family Area: 9'8 x 8'9 (2.95m x 2.67m)
 Kitchen: 9'5 x 8'9 (2.87m x 2.67m)

FIRST FLOOR

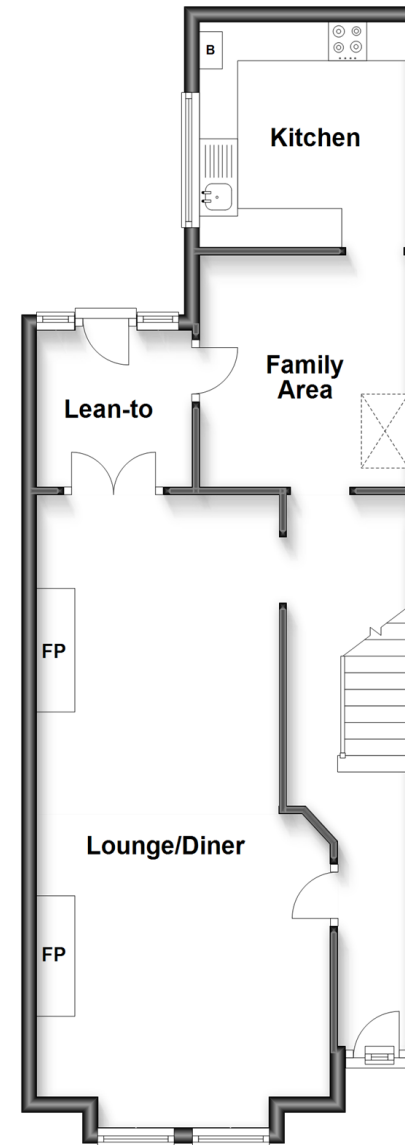
Landing
 Bedroom 1 : 15'0 x 11'9 (4.58m x 3.58m)
 Bedroom 2 : 13'2 x 9'2 (4.02m x 2.80m)
 Bedroom 3 : 9'6 x 8'9 (2.90m x 2.67m)
 Bathroom : 9'9 x 5'6 (2.97m x 1.68m)

OUTSIDE

Front Garden
 Rear Garden

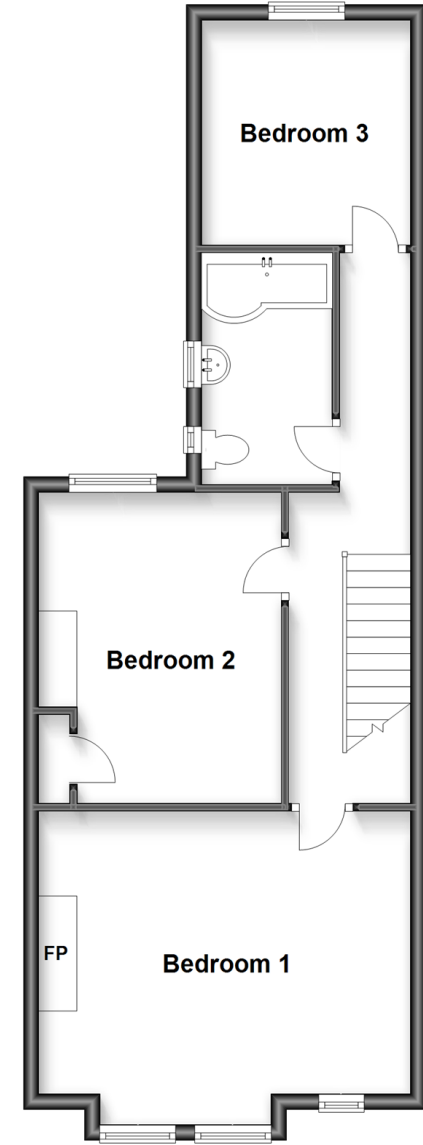
Ground Floor

Approx. 59.3 sq. metres (638.5 sq. feet)



First Floor

Approx. 55.5 sq. metres (597.0 sq. feet)



Call Canterbury - 01227 766669 ■ wardsof Kent.co.uk

- Legal advice should be taken to verify fixtures/fittings, planning, alterations and/or lease details
- Appliances & services are untested, dimensions are approximate and floor plans are not to scale
- Through a Homewise Home For Life Plan people aged 60+ can secure this property for up to 59% less, by purchasing a Lifetime Lease.



10348071/20230330/TG/AH