



Price
£400,000

Freehold

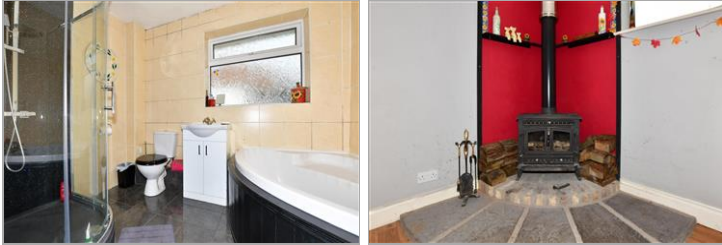
3x  1x  1x 

**School Lane,
Stourmouth, Canterbury,
Kent, CT3**

OVER 60?

Secure this property
for up to **59% less!**

Wards
Helping you move forwards



Main features

- Chain free! Spacious corner plot
- Driveway parking for multiple cars and recreational vehicles
- Recently refurbished shower room
- Various outbuildings with one ideal for home office use
- Sought after village location

Accommodation

GROUND FLOOR

Entrance Lobby: 6'6 x 4'9 (1.98m x 1.45m)

Entrance Hallway

Lounge: 18'4 x 11'9 (5.59m x 3.58m)

Kitchen: 19'6 x 10'8 (5.95m x 3.25m)

Bedroom 3: 9'2 x 7'4 (2.80m x 2.24m)

Bathroom: 8'7 maximum x 8'2 maximum (2.62m x 2.49m)

Bedroom 2: 11'9 x 9'9 (3.58m x 2.97m)

Bedroom 1: 11'9 x 11'8 (3.58m x 3.56m)

OUTSIDE

Front Garden

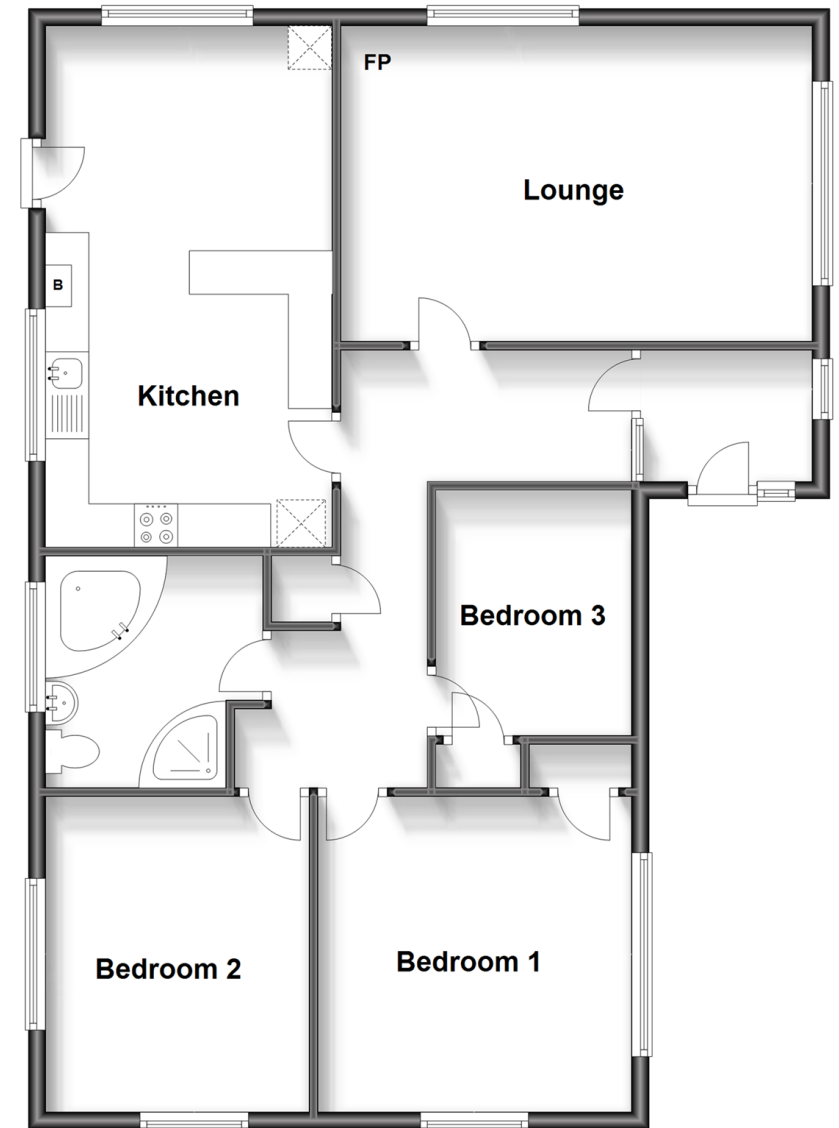
Off Road Parking

Garage

Rear Garden

Ground Floor

Approx. 95.5 sq. metres (1027.6 sq. feet)



Call Canterbury - 01227 766669 ■ wardsofkent.co.uk

- Legal advice should be taken to verify fixtures/fittings, planning, alterations and/or lease details
- Appliances & services are untested, dimensions are approximate and floor plans are not to scale
- Through a Homewise Home For Life Plan people aged 60+ can secure this property for up to 59% less, by purchasing a Lifetime Lease.



10348101/20231208/MW/TD