



**Price**  
**£485,000**

**Freehold**

4x  2x  1x 

**Aerodrome Road,  
Bekesbourne,  
Canterbury, Kent, CT4**

**OVER 60?**

Secure this property  
for up to **59% less!**

*Wards*  
Helping you move forwards





## Main features

- **Substantial detached bungalow**
- **Garage and driveway parking**
- **Wrap around gardens**
- **Outstanding location along a private road with stunning views across fields**
- **Popular Bekesbourne location with fantastic countryside walks on the doorstep**

## Accommodation

### GROUND FLOOR

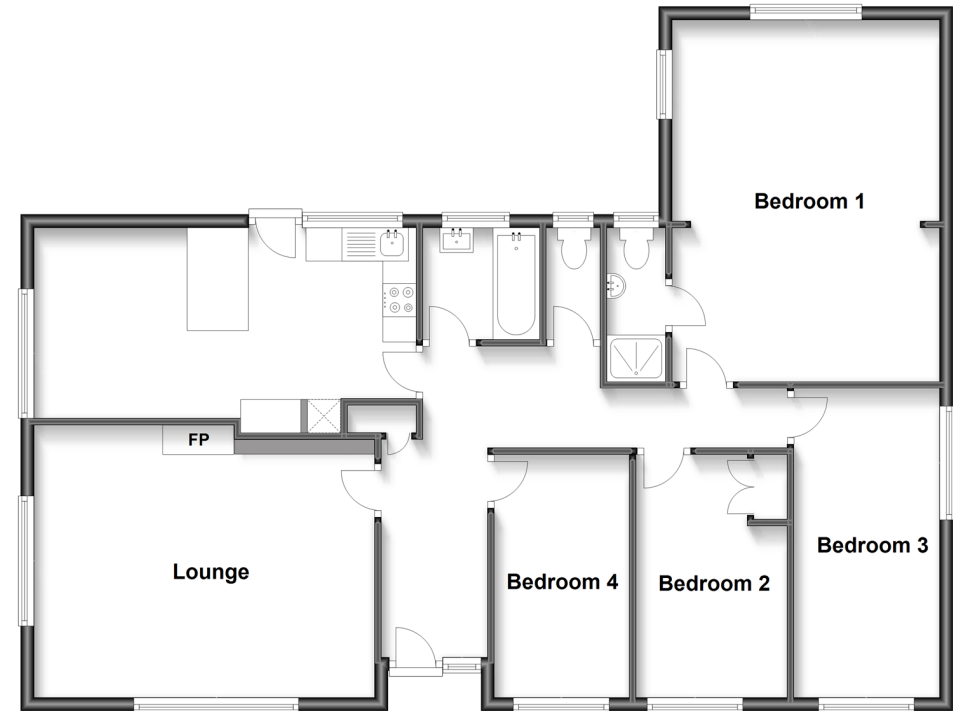
Entrance Hallway  
 Kitchen/Diner: 18'9 x 9'0 (5.72m x 2.75m)  
 Lounge: 16'4 x 13'0 (4.98m x 3.97m)  
 Bedroom 4: 11'5 x 6'3 (3.48m x 1.91m)  
 Bathroom: 5'3 x 5'1 (1.60m x 1.55m)  
 Separate Toilet  
 Bedroom 3: 11'4 x 7'0 (3.46m x 2.14m)  
 Bedroom 1: 18'1 x 12'8 (5.52m x 3.86m)  
 En Suite Shower Room: 7'2 x 2'9 (2.19m x 0.84m)  
 Bedroom 2: 14'6 x 6'8 (4.42m x 2.03m)

### OUTSIDE

Front Garden  
 Driveway  
 Garage  
 Rear Garden

### Ground Floor

Approx. 107.4 sq. metres (1156.4 sq. feet)



**Call Canterbury - 01227 766669 ■ wardsofkent.co.uk**

■ Legal advice should be taken to verify fixtures/fittings, planning, alterations and/or lease details  
 ■ Through a Homewise Home For Life Plan people aged 60+ can secure this property for up to 59% less, by purchasing a Lifetime Lease.

■ Appliances & services are untested, dimensions are approximate and floor plans are not to scale



10348129/20230503/TG/AH