



OVER 60?

Secure this property
for up to **59% less!**

Guide Price

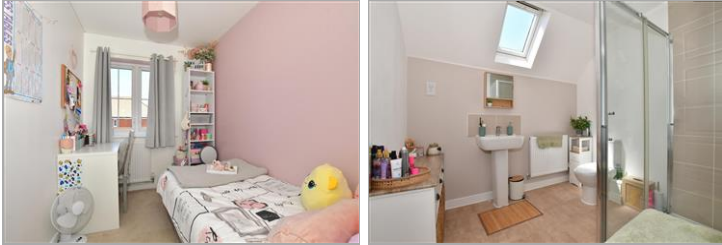
£330,000

Freehold

4x  2x  1x 

**Corminster Avenue,
Aylesham, Canterbury,
Kent, CT3**

Wards
Helping you move forwards



Main features

- Recently redecorated and fitted kitchen with Zanussi appliances
- Sunny rear garden
- Walking distance to good ofsted rated Aylesham Primary School
- Close to a local play area, ideal for young families
- Car port with allocated parking giving 2 spaces in total

Accommodation

GROUND FLOOR

Entrance Hallway
Cloakroom
Kitchen: 12'4 x 8'0 (3.76m x 2.44m)
Lounge/Diner: 16'6 x 15'0 (5.03m x 4.58m)

FIRST FLOOR

Landing
Bedroom 2: 14'6 x 8'3 (4.42m x 2.52m)
Bedroom 3: 12'1 x 8'4 (3.69m x 2.54m)
Bedroom 4: 8'7 x 6'3 (2.62m x 1.91m)
Bathroom: 6'2 x 5'6 (1.88m x 1.68m)

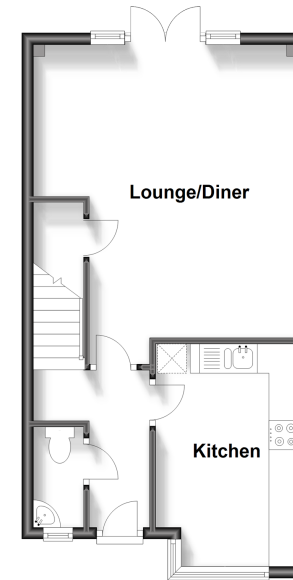
SECOND FLOOR

Landing
Bedroom 1: 12'6 x 11'4 (3.81m x 3.46m)
En Suite Shower Room: 8'10 x 7'2 (2.69m x 2.19m)

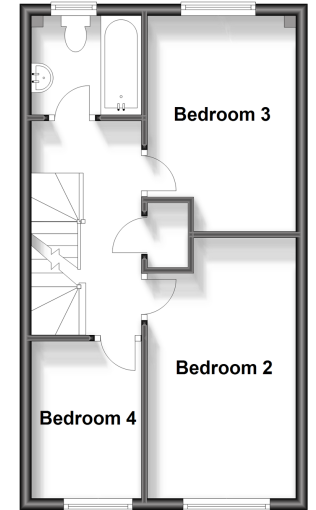
OUTSIDE

Front Garden
Rear Garden
Car Port
Allocated Parking Space

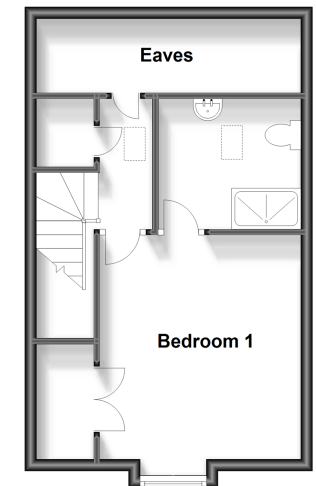
Ground Floor
Approx. 39.0 sq. metres (419.9 sq. feet)



First Floor
Approx. 37.7 sq. metres (405.4 sq. feet)



Second Floor
Approx. 34.7 sq. metres (373.5 sq. feet)



Call Canterbury - 01227 766669 ■ wardsofkent.co.uk

- Legal advice should be taken to verify fixtures/fittings, planning, alterations and/or lease details
- Appliances & services are untested, dimensions are approximate and floor plans are not to scale
- Through a Homewise Home For Life Plan people aged 60+ can secure this property for up to 59% less, by purchasing a Lifetime Lease.



10348170/20230814/TD/MW