



Price
£265,000

Freehold

3x  1x  1x 

**Hill Crescent, Aylesham,
Canterbury, Kent, CT3**

OVER 60?

Secure this property
for up to **59% less!**

Wards
Helping you move forwards



Main features

- Sunny rear garden, perfect for socialising
- Close to Ofsted rated good, Aylesham School
- Renovated throughout including fully rewired making it ready to move straight into
- Parking to the rear of the property
- Close to all amenities

Accommodation

GROUND FLOOR

Entrance Hallway

Lounge: 13'0 x 12'6 (3.97m x 3.81m)

Kitchen: 9'8 x 9'7 (2.95m x 2.92m)

Dining Area: 10'1 x 8'5 (3.08m x 2.57m)

FIRST FLOOR

Landing

Bedroom 1: 10'9 x 10'4 (3.28m x 3.15m)

Bedroom 2: 11'4 x 10'0 (3.46m x 3.05m)

Bedroom 3: 8'5 x 8'3 (2.57m x 2.52m)

Bathroom

Separate Toilet

OUTSIDE

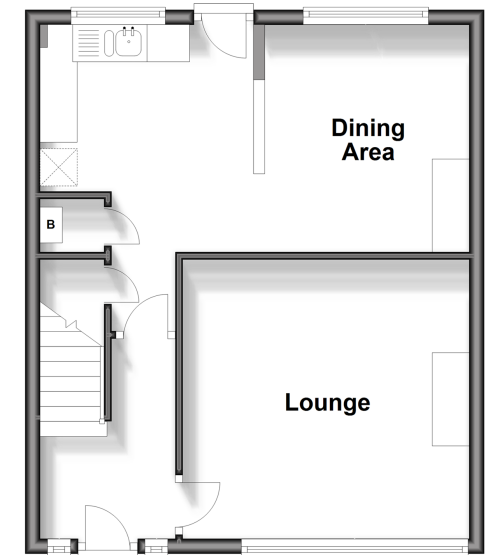
Front Garden

Rear Garden

Off Road Parking

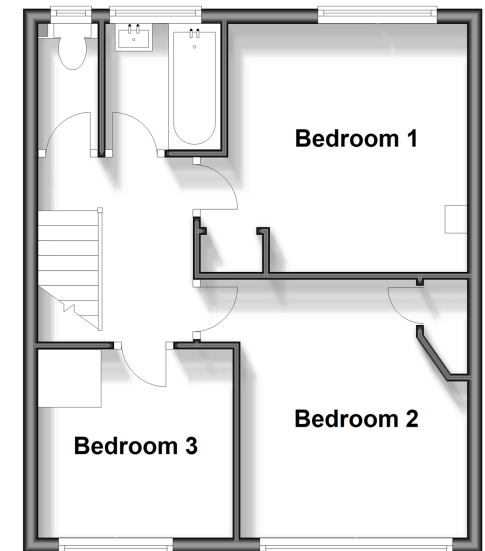
Ground Floor

Approx. 39.8 sq. metres (428.8 sq. feet)



First Floor

Approx. 39.8 sq. metres (428.8 sq. feet)



Call Canterbury - 01227 766669 ■ wardsofkent.co.uk

- Legal advice should be taken to verify fixtures/fittings, planning, alterations and/or lease details
- Appliances & services are untested, dimensions are approximate and floor plans are not to scale
- Through a Homewise Home For Life Plan people aged 60+ can secure this property for up to 59% less, by purchasing a Lifetime Lease.



10348176/20240222/AMY/MW