



Price
£175,000

2x  1x  1x 

**Woodlands Estate,
Blean, Canterbury, Kent,
CT2**

Wards
Helping you move forwards



Main features

- Well maintained park home for over 55's
- Desirable village location of Blean
- Double bedrooms
- Access to Blean Woods offering beautiful peaceful walks alongside wildlife and nature in abundance
- Spacious accommodation with stunning westerly sun setting views

Accommodation

GROUND FLOOR

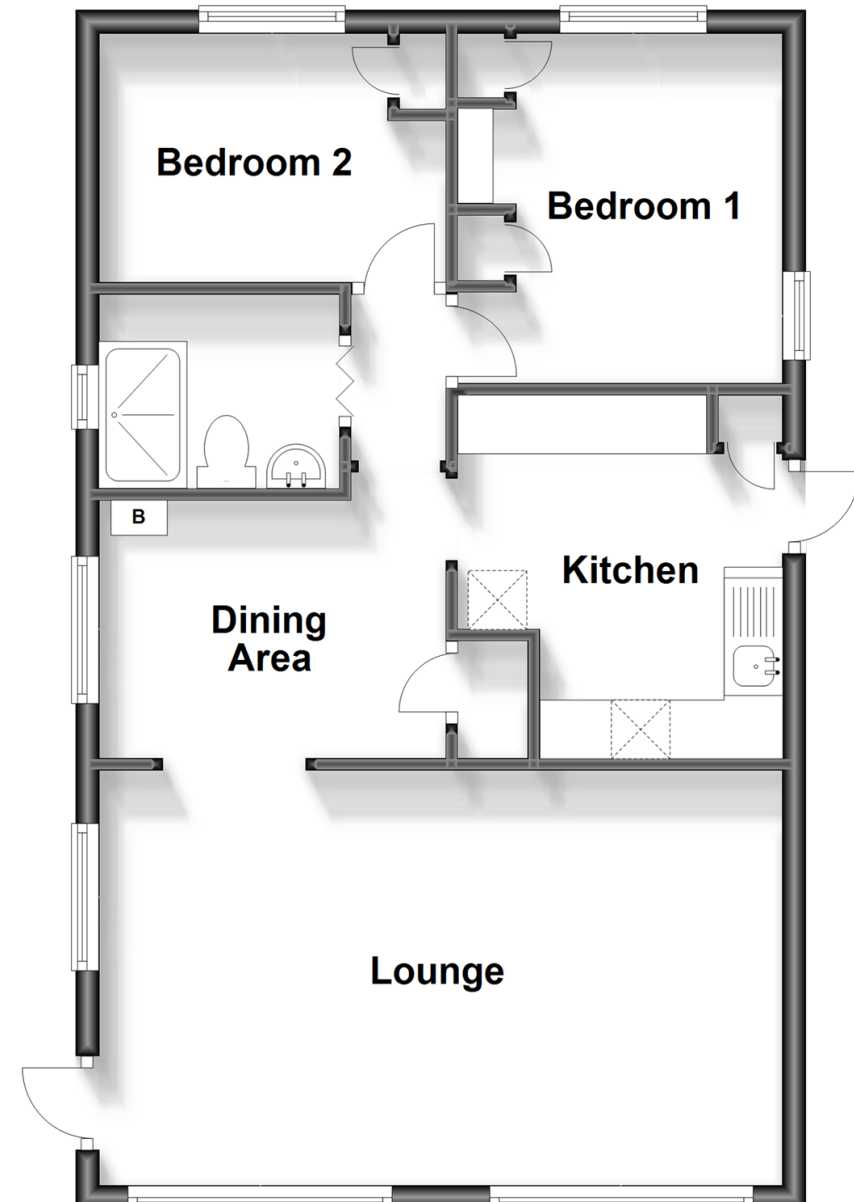
Lounge: 19'1 x 11'6 (5.82m x 3.51m)
 Dining Area: 9'7 x 7'2 (2.92m x 2.19m)
 Kitchen: 10'1 x 9'2 (3.08m x 2.80m)
 Wet Room: 6'7 x 5'4 (2.01m x 1.63m)
 Bedroom 1: 9'7 x 9'2 (2.92m x 2.80m)
 Bedroom 2: 9'4 x 6'9 (2.85m x 2.06m)

OUTSIDE

Off Road Parking
 Rear Garden

Ground Floor

Approx. 57.1 sq. metres (615.0 sq. feet)



Call Canterbury - 01227 766669 ■ wardsofkent.co.uk

- If buying to let, the energy rating will need to be improved to at least 'E' rating before you can let the property
- Legal advice should be taken to verify fixtures/fittings, planning, alterations and/or lease details
- Appliances & services are untested, dimensions are approximate and floor plans are not to scale



10348216/20230824/TG/TD