



Price
£280,000

Freehold

2x  1x  1x 

**The Street, Adisham,
Canterbury, Kent, CT3**

OVER 60?

Secure this property
for up to **59% less!**

Wards
Helping you move forwards



Main features

- **Fantastic countryside character home**
- **Hard standing parking to the front**
- **Downstairs bathroom and upstairs cloakroom**
- **Glorious views across open countryside to the rear**
- **Sought after Adisham village with very well regarded primary school**

Accommodation

GROUND FLOOR

Entrance Hallway

Lounge: 10'9 x 9'8 (3.28m x 2.95m)

Dining Area: 15'2 x 10'9 (4.63m x 3.28m)

Kitchen: 12'3 x 7'8 (3.74m x 2.34m)

Bathroom: 8'4 x 7'7 (2.54m x 2.31m)

Utility Room

FIRST FLOOR

Landing

Bedroom 1: 11'9 x 11'2 (3.58m x 3.41m)

Bedroom 2: 12'7 x 7'5 (3.84m x 2.26m)

Cloakroom: 7'8 x 2'7 (2.34m x 0.79m)

OUTSIDE

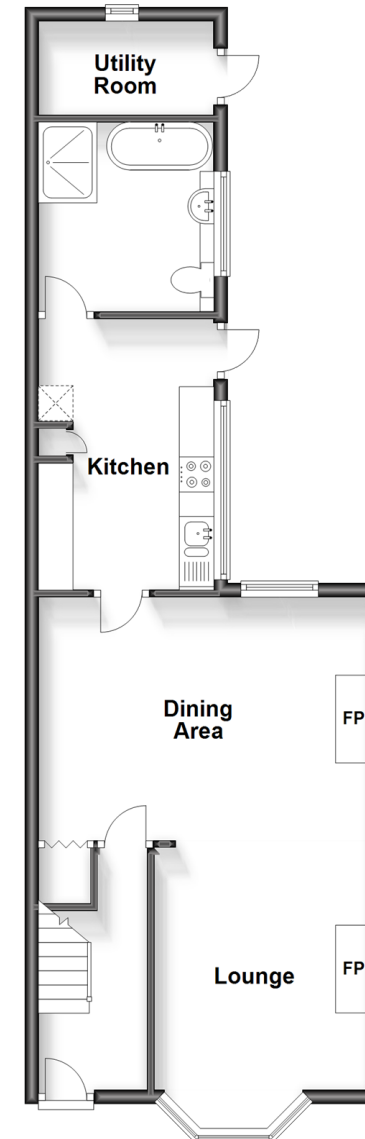
Front Garden

Off Road Parking

Rear Garden

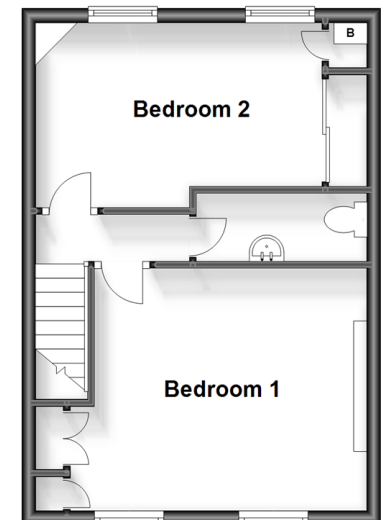
Ground Floor

Approx. 54.7 sq. metres (588.7 sq. feet)



First Floor

Approx. 33.3 sq. metres (358.0 sq. feet)



Call Canterbury - 01227 766669 ■ wardsof Kent.co.uk

- Legal advice should be taken to verify fixtures/fittings, planning, alterations and/or lease details
- Appliances & services are untested, dimensions are approximate and floor plans are not to scale
- Through a Homewise Home For Life Plan people aged 60+ can secure this property for up to 59% less, by purchasing a Lifetime Lease.



10348246/20231006/MW/AH