



Price
£385,000

Freehold

2x  1x  1x 

**Cherville Lane,
Bramling, Canterbury,
Kent, CT3**

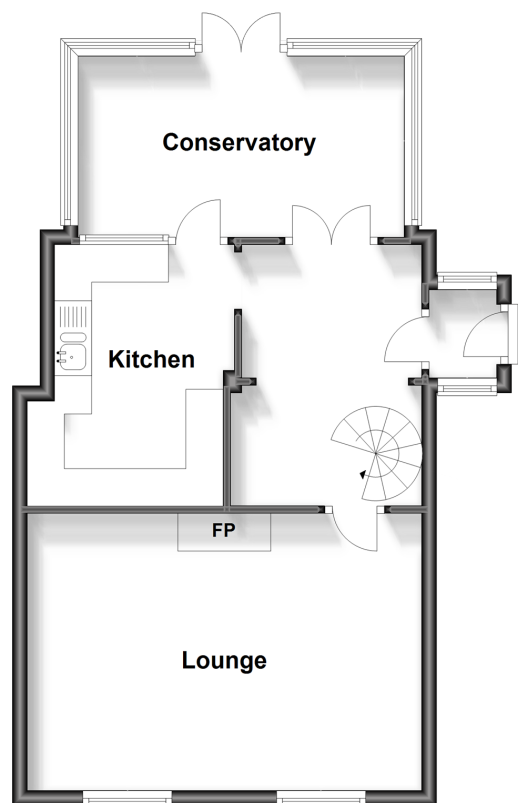
OVER 60?

Secure this property
for up to **59% less!**

Wards
Helping you move forwards

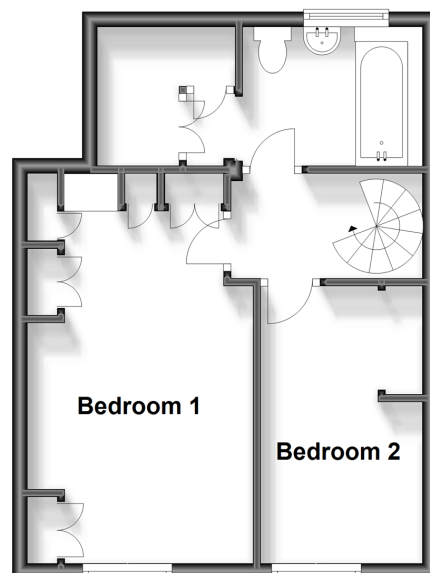
Ground Floor

Approx. 50.2 sq. metres (540.4 sq. feet)



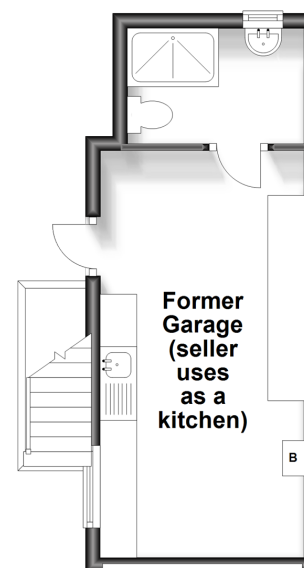
First Floor

Approx. 36.2 sq. metres (389.5 sq. feet)



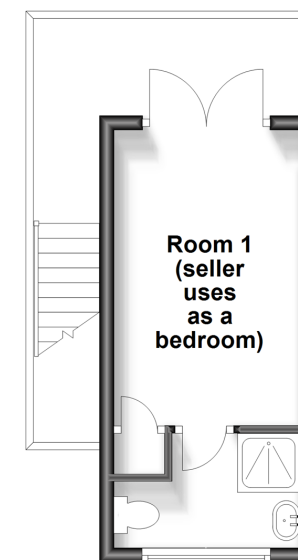
Outbuilding Ground Floor

Approx. 19.4 sq. metres (208.4 sq. feet)



Outbuilding First Floor

Approx. 14.4 sq. metres (154.6 sq. feet)



Accommodation

GROUND FLOOR

Porch
 Entrance Hallway: 11'5 x 7'7 (3.48m x 2.31m)
 Lounge: 17'4 x 12'1 (5.29m x 3.69m)
 Kitchen: 11'4 x 8'6 (3.46m x 2.59m)
 Conservatory: 14'4 x 10'2 (4.37m x 3.10m)

FIRST FLOOR

Landing
 Bedroom 1: 16'9 x 9'9 (5.11m x 2.97m)
 Bedroom 2: 12'1 x 7'1 (3.69m x 2.16m)
 Bathroom: 9'9 x 6'0 (2.97m x 1.83m)

OUTSIDE

Driveway
 Front Garden
 Rear Garden

OUT BUILDING GROUND FLOOR

Former Garage used as kitchen: 18'0 x 9'1 (5.49m x 2.77m)
 Shower Room: 7'8 x 5'4 (2.34m x 1.63m)

OUT BUILDING FIRST FLOOR

Room 1 used as bedroom: 13'1 x 8'3 (3.99m x 2.52m)
 Shower Room: 8'2 x 5'0 (2.49m x 1.53m)



Main features

- Detached garage converted to living space, Driveway
- Beautifully maintained throughout and ready to move straight into
- Stunning views of rolling countryside from your garden
- Shed on hard standing with power



Nearest Schools

Primary Schools: Littlebourne C of E Primary 0.8 miles, Wickhambreaux C of E Primary 1.0 miles, Wingham Primary 1.2 miles
Secondary Schools: Spires Academy 3.3 miles, St Anselm's Catholic School 3.6 miles



Transport Information

Train Stations: Adisham 2.0 miles, Bekesbourne 2.0 miles, Aylesham 3.2 miles



Address

Cherville Lane, Bramling, Canterbury, Kent, CT3



Directions

For directions to this property please contact us.





Call Canterbury Branch 01227 766669 ■ wardsofkent.co.uk



- Legal advice should be taken to verify fixtures/fittings, planning, alterations and/or lease details
- Appliances & services are untested, dimensions are approximate and floor plans are not to scale
- Through a Homewise Home For Life Plan people aged 60+ can secure this property for up to 59% less, by purchasing a Lifetime Lease.



10348275/20240321/TG/TD