



**Price**  
**£250,000**

**Freehold**

2x  1x  1x 

**The Street, Ash, Kent,  
CT3**

**OVER 60?**

Secure this property  
for up to **59% less!**

*Wards*  
Helping you move forwards





## Main features

- Beautiful character filled cottage
- Driveway parking
- Lawned garden with summer house
- Ideal first time buy in a great condition ready to move straight into
- Walking distance to the local shops, pub and bus route

## Accommodation

### GROUND FLOOR

Lounge: 12'5 x 11'9 (3.79m x 3.58m)

Kitchen: 11'5 x 7'2 (3.48m x 2.19m)

### FIRST FLOOR

Landing

Bedroom 1: 11'9 x 10'3 (3.58m x 3.13m)

Bedroom 2: 7'8 x 6'0 (2.34m x 1.83m)

Shower Room: 7'2 x 3'7 (2.19m x 1.09m)

### OUTSIDE

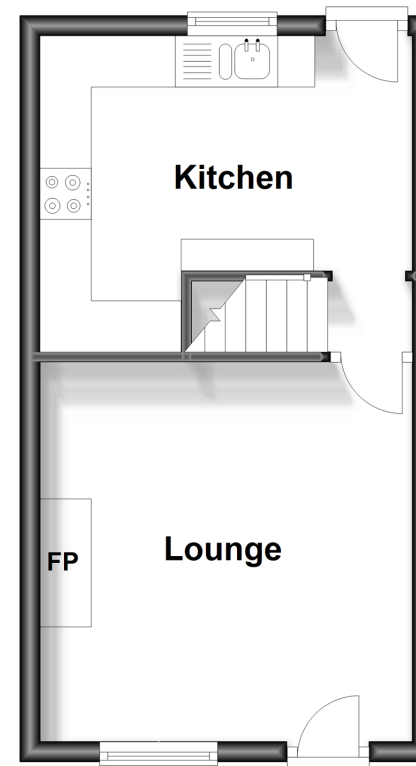
Front Garden

Rear Garden

Driveway Parking

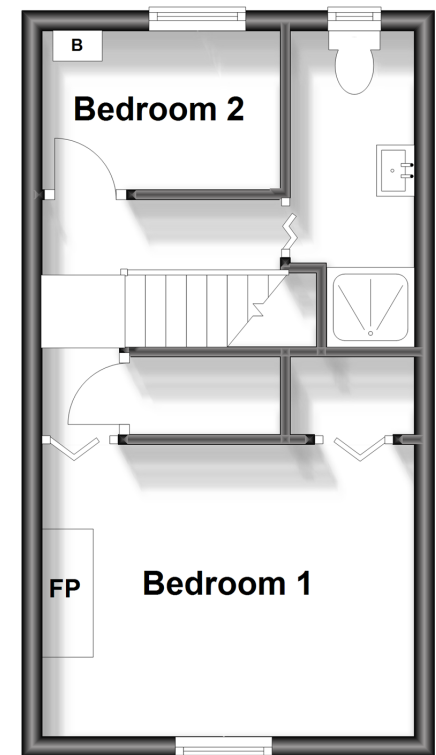
## Ground Floor

Approx. 24.9 sq. metres (267.8 sq. feet)



## First Floor

Approx. 25.1 sq. metres (269.8 sq. feet)



**Call Canterbury - 01227 766669 ■ [wardsofkent.co.uk](http://wardsofkent.co.uk)**

- Legal advice should be taken to verify fixtures/fittings, planning, alterations and/or lease details
- Appliances & services are untested, dimensions are approximate and floor plans are not to scale
- Through a Homewise Home For Life Plan people aged 60+ can secure this property for up to 59% less, by purchasing a Lifetime Lease.



10348279/20230907/TG/TD