



Price
£750,000

Freehold

6x  3x  1x 

**Ashford Road,
Chartham, Canterbury,
Kent, CT4**

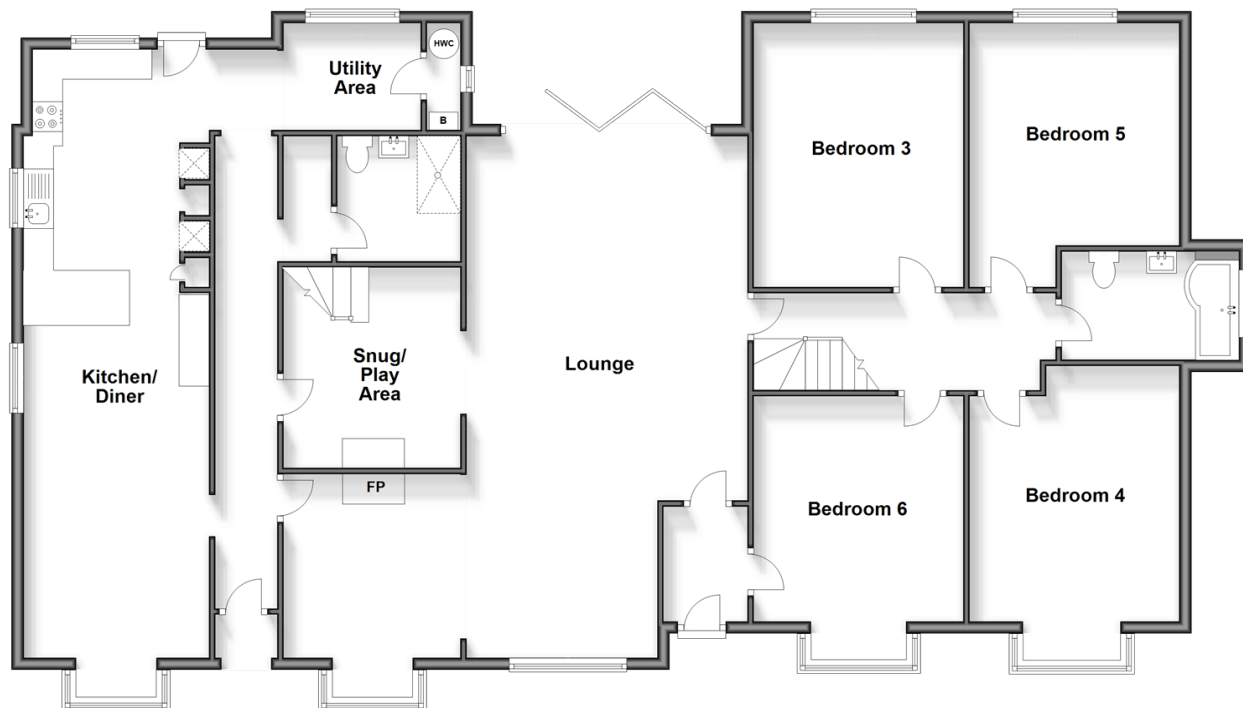
OVER 60?

Secure this property
for up to **59% less!**

Wards
Helping you move forwards

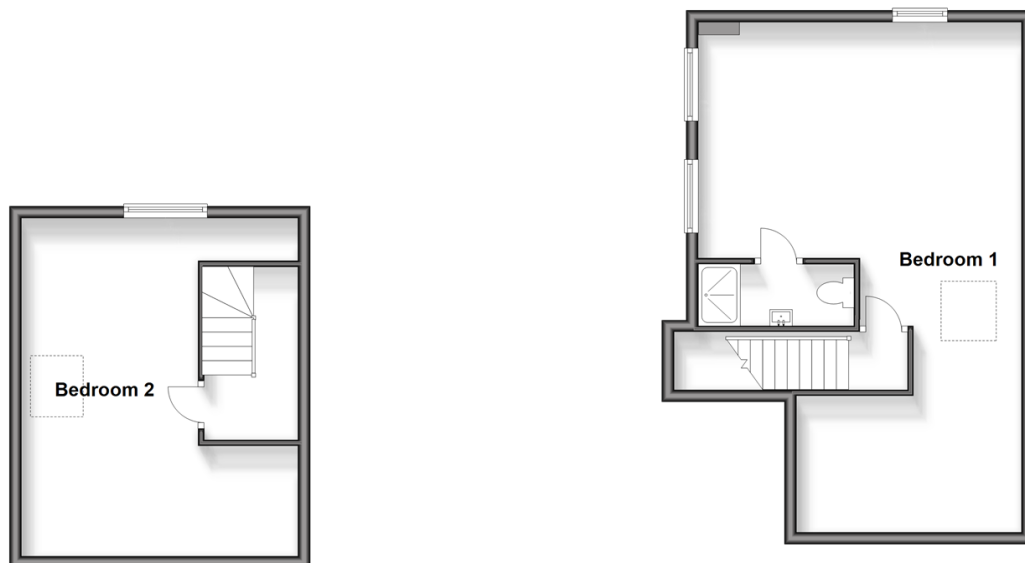
Ground Floor

Approx. 191.6 sq. metres (2062.1 sq. feet)



First Floor

Approx. 68.9 sq. metres (741.7 sq. feet)



Accommodation

GROUND FLOOR

Entrance Lobby

Lounge: 28'1 x 21'0 (8.57m x 6.41m)

Inner Hallway

Bedroom 3: 15'6 x 11'5 (4.73m x 3.48m)

Bedroom 4: 18'0 x 13'0 (5.49m x 3.97m)

Bedroom 5: 14'9 x 11'5 (4.50m x 3.48m)

Bedroom 6: 14'10 x 11'6 (4.52m x 3.51m)

Bathroom : 9'7 x 5'11 (2.92m x 1.80m)

Entrance Hallway

Kitchen/Diner: 35'0 x 10'2 (10.68m x 3.10m)

Snug/Play Area: 11'0 x 10'0 (3.36m x 3.05m)

Shower Room: 6'1 x 6'0 (1.86m x 1.83m)

Utility Area: 7'0 x 6'0 (2.14m x 1.83m)

FIRST FLOOR

Landing

Bedroom 1: 17'8 x 17'4 (5.39m x 5.29m)

Dressing Area: 12'7 x 6'10 (3.84m x 2.08m)

En-Suite Shower Room: 8'4 x 3'3 (2.54m x 0.99m)

Bedroom 2: 14'10 x 11'3 (4.52m x 3.43m)

OUTSIDE

Driveway

Rear Garden



Main features

- Dual zoned heating system
- Large driveway with parking for multiple vehicles
- Great size garden with amazing views and direct access to the orchards
- Adaptable and versatile living space with neutral and modern decoration throughout
- Beautiful loft bedroom with en-suite shower room, dressing area and impressive views



Nearest Schools

Primary Schools: Chartham Primary 1.0 miles, Beauherne Primary 1.7 miles, Wincheap Foundation Primary 1.9 miles

Secondary Schools: Canterbury Steiner School Ltd 1.3 miles, The Canterbury High School 1.9 miles



Transport Information

Train Stations: Chartham 0.5 miles, Canterbury East 2.2 miles, Chilham 2.4 miles



Address

Ashford Road, Chartham, Canterbury, Kent, CT4



Directions

For directions to this property please contact us.



Wards
Helping you move forwards

Call Canterbury Branch 01227 766669 ■ wardsofkent.co.uk



■ Legal advice should be taken to verify fixtures/fittings, planning, alterations and/or lease details ■ Appliances & services are untested, dimensions are approximate and floor plans are not to scale
■ Through a Homewise Home For Life Plan people aged 60+ can secure this property for up to 59% less, by purchasing a Lifetime Lease.



10348291/20240429/TG/JT