



Guide Price
£375,000

Freehold

3x  2x  1x 

**Park Lane, Preston,
Canterbury, Kent, CT3**

OVER 60?

Secure this property
for up to **59% less!**

Wards
Helping you move forwards



Main features

- Immaculately presented period cottage
- En suite shower room
- All double bedrooms
- Situated "secretly" on Park Lane in the highly desirable village of Preston
- Beautifully manicured low maintenance rear garden with shed

Accommodation

GROUND FLOOR

Entrance Lobby

Lounge: 11'8 x 11'2 (3.56m x 3.41m)

Kitchen/Diner: 16'9 x 11'8 (5.11m x 3.56m)

FIRST FLOOR

Landing

Bedroom 1: 11'9 x 11'2 (3.58m x 3.41m)

Bedroom 2: 9'8 x 9'3 (2.95m x 2.82m)

En Suite Shower Room

Bedroom 3: 11'2 x 8'9 (3.41m x 2.67m)

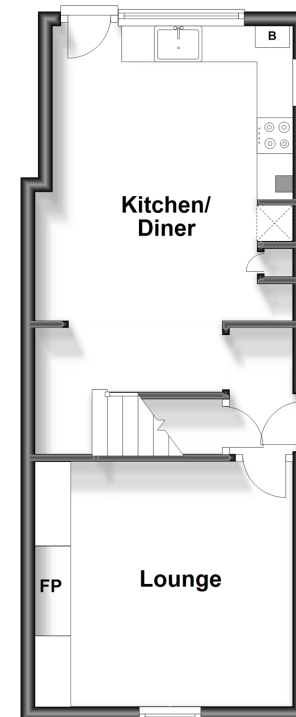
Bathroom

OUTSIDE

Rear Garden

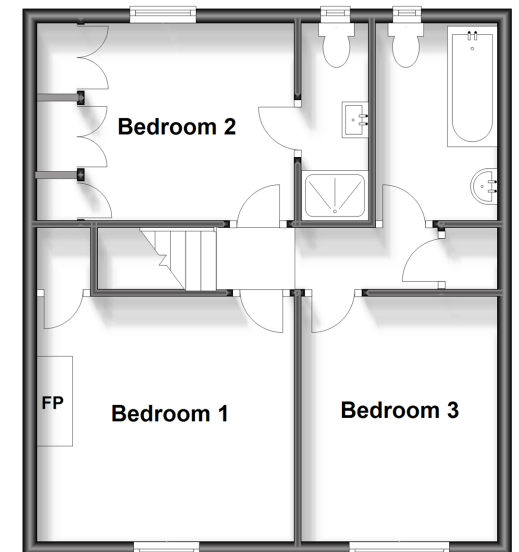
Ground Floor

Approx. 33.6 sq. metres (362.2 sq. feet)



Split Level First Floor

Approx. 46.7 sq. metres (502.1 sq. feet)



Call Canterbury - 01227 766669 ■ wardsofkent.co.uk

■ Legal advice should be taken to verify fixtures/fittings, planning, alterations and/or lease details
 ■ Through a Homewise Home For Life Plan people aged 60+ can secure this property for up to 59% less, by purchasing a Lifetime Lease.

■ Appliances & services are untested, dimensions are approximate and floor plans are not to scale



10348306/20230922/TG/TD