



Price
£190,000

Freehold

1x  1x  1x 

**Winder Place, Aylesham,
Canterbury, Kent, CT3**

OVER 60?

Secure this property
for up to **59% less!**

Wards
Helping you move forwards



Main features

- Sunny private rear garden with outside storage
- Close to direct public transport links to Canterbury and further afield
- Allocated parking for 1 car
- Perfect to move straight into with integrated kitchen appliances
- Walking distance to local amenities including a doctors surgery

Accommodation

FIRST FLOOR

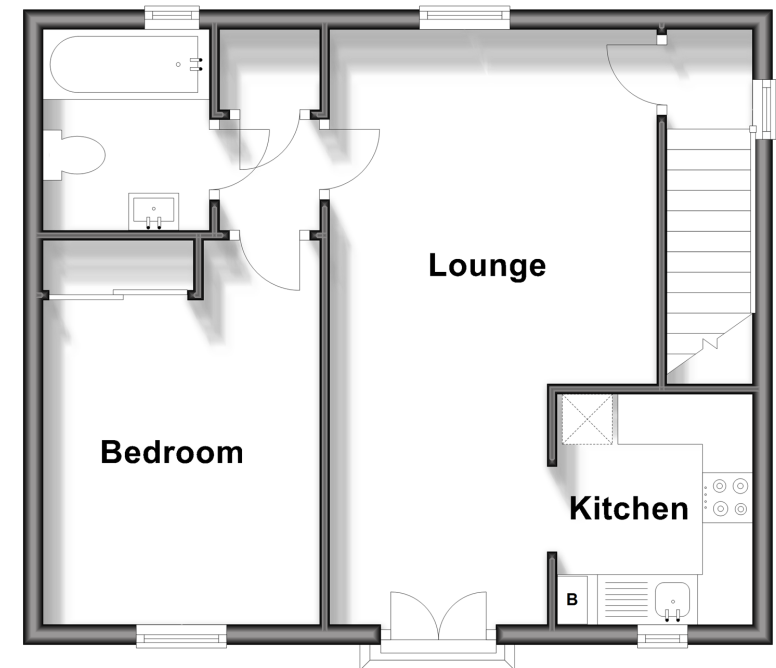
Entrance Hallway
 Lounge: 19'6 x 10'9 (5.95m x 3.28m)
 Kitchen: 7'4 x 6'4 (2.24m x 1.93m)
 Bathroom
 Bedroom: 12'7 x 9'4 (3.84m x 2.85m)

OUTSIDE

Rear Garden
 Allocated Parking x 1

First Floor

Approx. 42.1 sq. metres (453.0 sq. feet)



Call Canterbury - 01227 766669 ■ wardsofkent.co.uk

■ Legal advice should be taken to verify fixtures/fittings, planning, alterations and/or lease details
 ■ Through a Homewise Home For Life Plan people aged 60+ can secure this property for up to 59% less, by purchasing a Lifetime Lease.

■ Appliances & services are untested, dimensions are approximate and floor plans are not to scale

