



Price

£460,000

Freehold

4x  2x  2x 

**Plot 98, Lakehill Road,
Canterbury, Kent, CT3**

Wards
Helping you move forwards



Main features

- Full of modern conveniences such as a utility room, off road parking and garage
- Close to good bus links into Canterbury and out to Thanet and its sandy beaches
- Close to schools
- Close to Westbere Lakes
- Countryside walks on your doorstep

Accommodation

GROUND FLOOR

Entrance Hallway
Cloakroom
Lounge: 21'2 x 11'8 (6.46m x 3.56m)
Kitchen/Diner: 25'7 x 11'7 (7.80m x 3.53m)
Utility Room: 6'6 x 5'9 (1.98m x 1.75m)

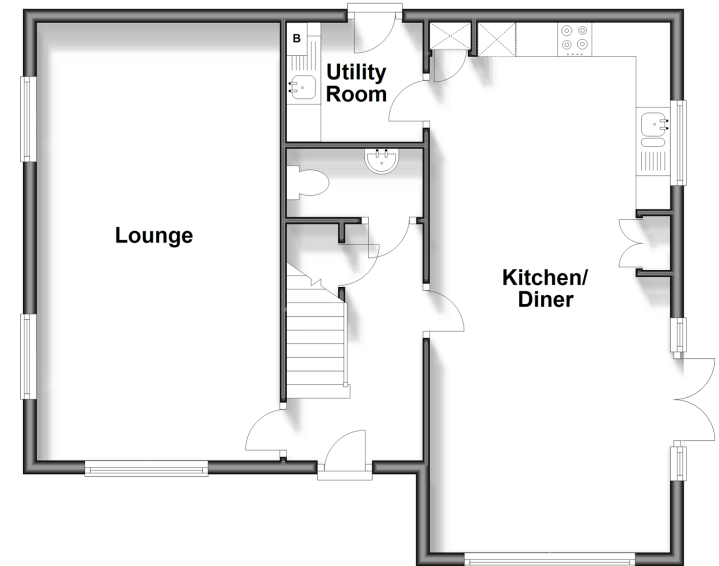
FIRST FLOOR

Landing
Bedroom 1: 11'11 x 11'8 (3.63m x 3.56m)
En Suite Shower Room
Bedroom 2: 11'11 x 9'2 (3.63m x 2.80m)
Bedroom 3: 11'7 x 9'8 (3.53m x 2.95m)
Bedroom 4: 10'4 x 8'9 (3.15m x 2.67m)
Bathroom: 8'1 x 6'8 (2.47m x 2.03m)

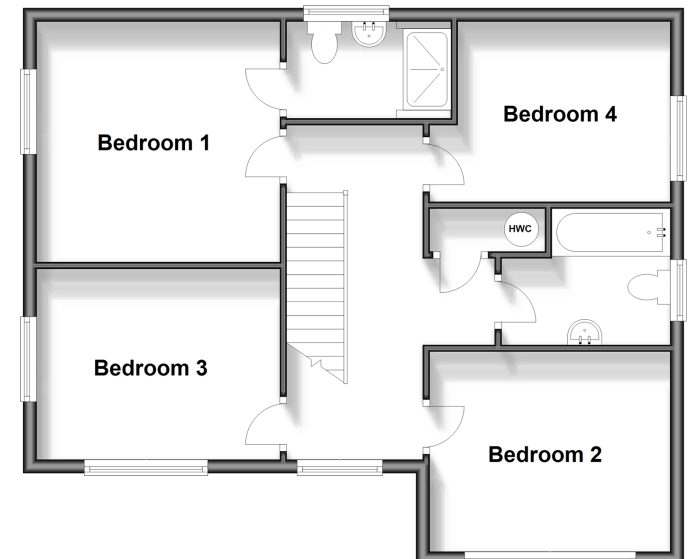
OUTSIDE

Front Garden
Off Road Parking
Garage
Rear Garden

Ground Floor
Approx. 64.2 sq. metres (691.2 sq. feet)



First Floor
Approx. 64.2 sq. metres (691.2 sq. feet)



Call Canterbury - 01227 766669 ■ wardsokent.co.uk

- Legal advice should be taken to verify fixtures/fittings, planning, alterations and/or lease details
- Appliances & services are untested, dimensions are approximate and floor plans are not to scale



10348438/20231215/TG/JT