



Price
£360,000

Freehold

4x  1x  1x 

**Ingoldsby Road,
Canterbury, Kent, CT1**

OVER 60?

Secure this property
for up to **59% less!**

Wards
Helping you move forwards



Main features

- Cul de sac location with easy access to Canterbury city centre
- Double storey extension to the rear
- Side access and driveway parking for 2 cars
- Spacious family home with huge potential
- Large sunny rear garden

Accommodation

GROUND FLOOR

Entrance Porch
Entrance Hallway
Wet Room
Dining Area: 17'3 x 9'3 (5.26m x 2.82m)
Lounge: 9'3 x 9'1 (2.82m x 2.77m)
Kitchen: 14'4 x 10'2 (4.37m x 3.10m)

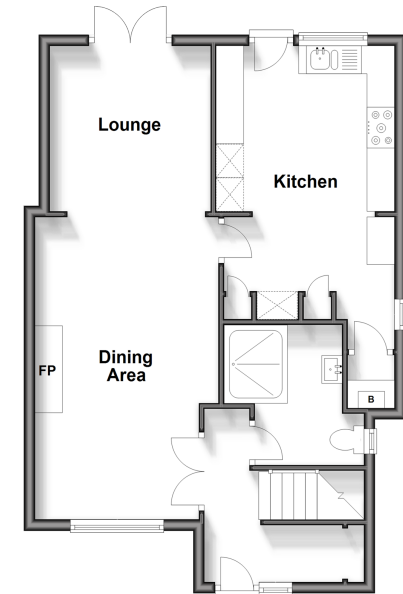
FIRST FLOOR

Landing
Bedroom 1: 10'3 x 9'1 (3.13m x 2.77m)
Bedroom 2: 10'7 x 8'3 (3.23m x 2.52m)
Bedroom 3: 9'1 x 9'0 (2.77m x 2.75m)
Bedroom 4: 8'8 x 7'0 (2.64m x 2.14m)

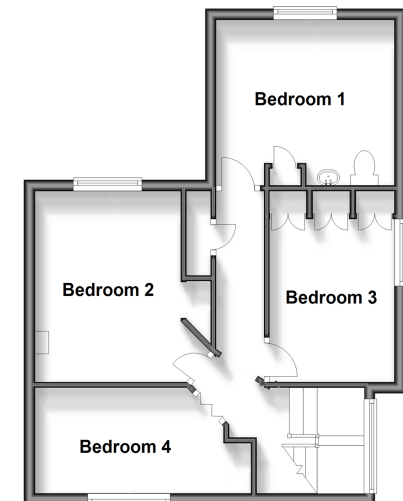
OUTSIDE

Front Garden
Driveway Parking
Rear Garden

Ground Floor
Approx. 56.7 sq. metres (609.9 sq. feet)



First Floor
Approx. 44.2 sq. metres (475.3 sq. feet)



Call Canterbury - 01227 766669 ■ wardsofkent.co.uk

- Legal advice should be taken to verify fixtures/fittings, planning, alterations and/or lease details
- Appliances & services are untested, dimensions are approximate and floor plans are not to scale
- Through a Homewise Home For Life Plan people aged 60+ can secure this property for up to 59% less, by purchasing a Lifetime Lease.



10348486/20240224/MW/MWI