



**Price**  
**£140,000**

**Leasehold**

1x  1x  1x 

**St. Radigund's Street,  
Canterbury, Kent, CT1**

*Wards*  
Helping you move forwards



## Main features

- Offered for sale with no onward chain
- Set in the popular Chantry Court development
- Independent living with communal facilities and a on site housing manager
- Attractive communal gardens
- Central city location

## Accommodation

### GROUND FLOOR

Entrance Hallway

Bedroom: 9'5 x 9'1 (2.87m x 2.77m)

Bathroom

Lounge/Diner: 13'6 x 13'1 (4.12m x 3.99m)

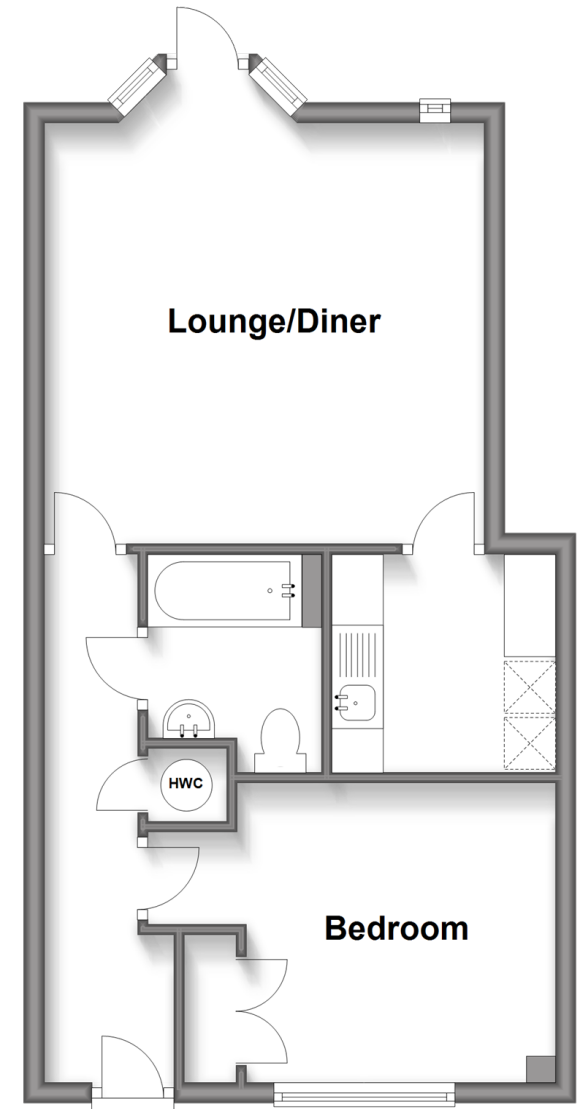
Kitchen: 6'6 x 6'5 (1.98m x 1.96m)

### OUTSIDE

Communal Garden

## Ground Floor

Approx. 43.9 sq. metres (472.6 sq. feet)



**Call Canterbury - 01227 766669 ■ [wardsokent.co.uk](http://wardsokent.co.uk)**

- Legal advice should be taken to verify fixtures/fittings, planning, alterations and/or lease details
- Appliances & services are untested, dimensions are approximate and floor plans are not to scale



10348518/20240207/TG/MWI