



OVER 60?

Secure this property
for up to **59% less!**

Price

£150,000

Leasehold

1x  1x  1x 

**Copinger Close,
Canterbury, Kent, CT2**

Wards
Helping you move forwards



Main features

- No onward chain
- Long lease with over 100 years left
- Ideal investment or first time purchase
- Ready to move straight into
- Well connected with bus routes nearby and a short walk to the newly built Riverside development

Accommodation

GROUND FLOOR

Entrance Hallway

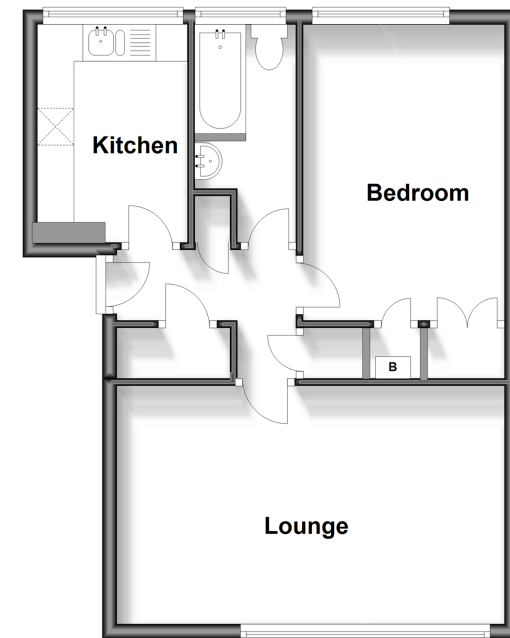
Lounge: 16'9 x 10'6 (5.11m x 3.20m)

Kitchen: 9'2 x 6'3 (2.80m x 1.91m)

Bedroom : 13'3 x 8'6 (4.04m x 2.59m)

Bathroom

Ground Floor
Approx. 46.5 sq. metres (500.1 sq. feet)



Call Canterbury - 01227 766669 ■ wardsofkent.co.uk

■ Legal advice should be taken to verify fixtures/fittings, planning, alterations and/or lease details
 ■ Through a Homewise Home For Life Plan people aged 60+ can secure this property for up to 59% less, by purchasing a Lifetime Lease.

■ Appliances & services are untested, dimensions are approximate and floor plans are not to scale



10348559/20240328//MWI