



**OVER 60?**

Secure this property  
for up to **59% less!**

**Price**

**£280,000**

**Freehold**

2x  1x  2x 

**Ivy Lane, Canterbury,  
Kent, CT1**

*Wards*  
Helping you move forwards





## Main features

- Charming house dating back to the 1800's
- Double bedrooms with original features
- Quaint garden with decked area
- Close proximity to the city centre and local amenities
- Neutral decoration throughout, perfect to create to your own style

## Accommodation

### GROUND FLOOR

Lounge: 11'10 x 10'6 (3.61m x 3.20m)

Dining Room: 10'5 x 9'8 (3.18m x 2.95m)

Kitchen: 7'10 x 6'0 (2.39m x 1.83m)

Shower Room

### FIRST FLOOR

Landing

Bedroom 1: 11'11 x 10'5 (3.63m x 3.18m)

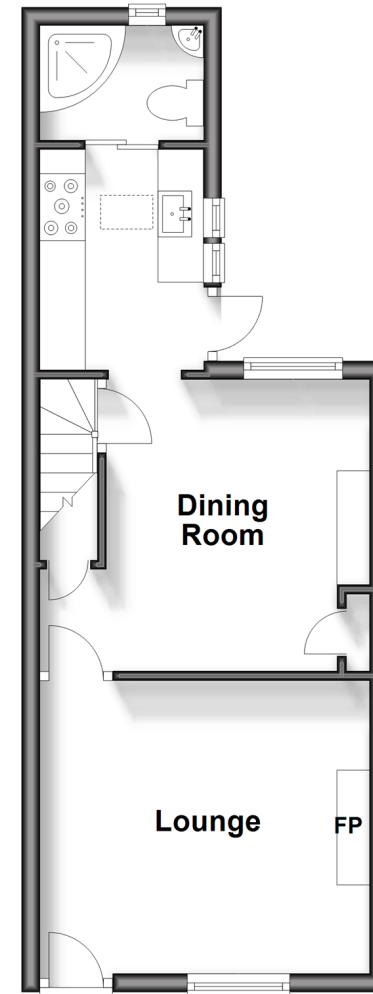
Bedroom 2: 10'5 x 9'6 (3.18m x 2.90m)

### OUTSIDE

Rear Garden

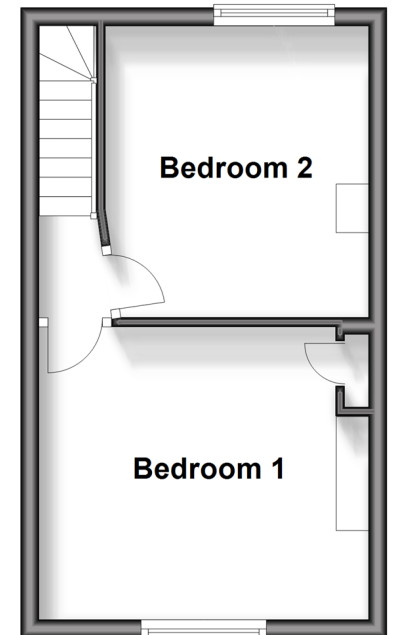
### Ground Floor

Approx. 30.4 sq. metres (327.4 sq. feet)



### First Floor

Approx. 23.5 sq. metres (252.8 sq. feet)



**Call Canterbury - 01227 766669 ■ [wardsofkent.co.uk](http://wardsofkent.co.uk)**

- Legal advice should be taken to verify fixtures/fittings, planning, alterations and/or lease details
- Appliances & services are untested, dimensions are approximate and floor plans are not to scale
- Through a Homewise Home For Life Plan people aged 60+ can secure this property for up to 59% less, by purchasing a Lifetime Lease.



10348597/20240427/TG/JT