



Price
£270,000

Freehold

2x  1x  1x 

**Orchid Cottages,
Cockering Road,
Canterbury, Kent, CT1**

Wards
Helping you move forwards



Main features

- Barn conversion surrounded by countryside
- Allocated parking for 2 cars
- Boasts lots of character features
- Exclusive private development
- Perfect for a first time buyer or an investor

Accommodation

GROUND FLOOR

Entrance Porch
Entrance Hallway
Kitchen: 10'1 x 7'1 (3.08m x 2.16m)
Lounge: 14'2 x 13'2 (4.32m x 4.02m)

FIRST FLOOR

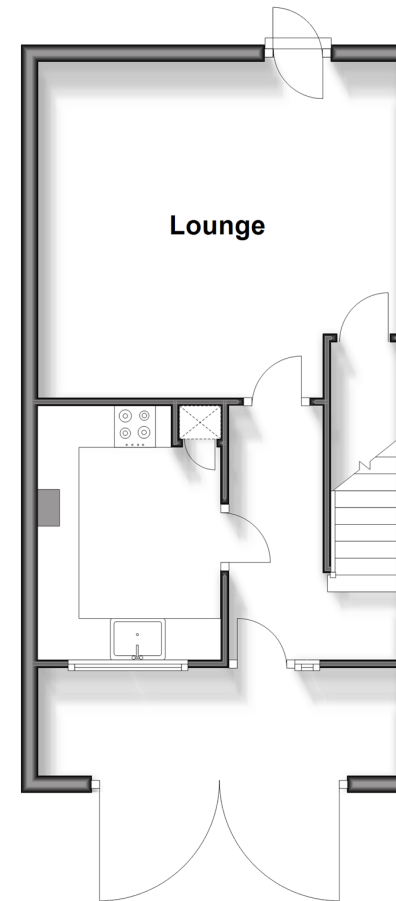
Landing
Bedroom 1: 14'2 x 10'8 (4.32m x 3.25m)
Bedroom 2: 11'7 x 10'7 (3.53m x 3.23m)
Shower Room: 6'8 x 5'5 (2.03m x 1.65m)

OUTSIDE

Rear Garden
Allocated Parking Space x 2

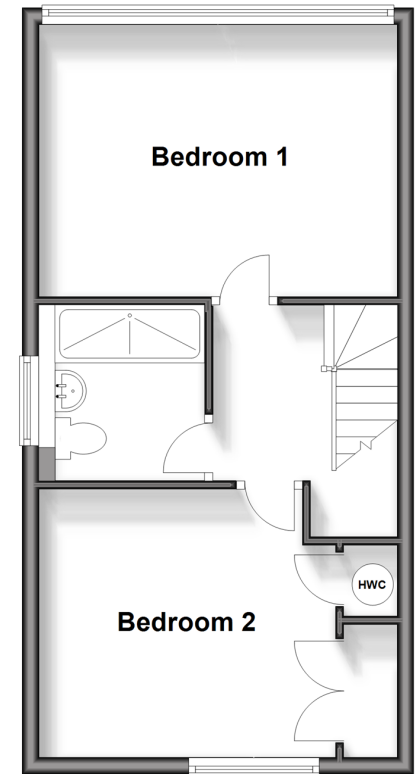
Ground Floor

Approx. 31.2 sq. metres (335.4 sq. feet)



First Floor

Approx. 38.4 sq. metres (413.4 sq. feet)



Call Canterbury - 01227 766669 ■ wardsokent.co.uk

- Legal advice should be taken to verify fixtures/fittings, planning, alterations and/or lease details
- Appliances & services are untested, dimensions are approximate and floor plans are not to scale



10348618/20240510/CA/MIA