



OVER 60?

Secure this property
for up to **59% less!**

Price
£190,000

Freehold

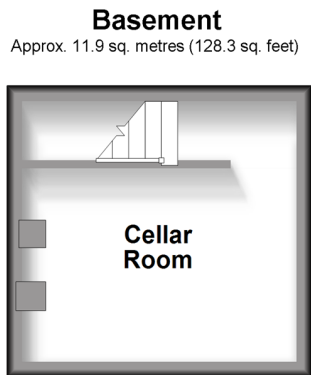
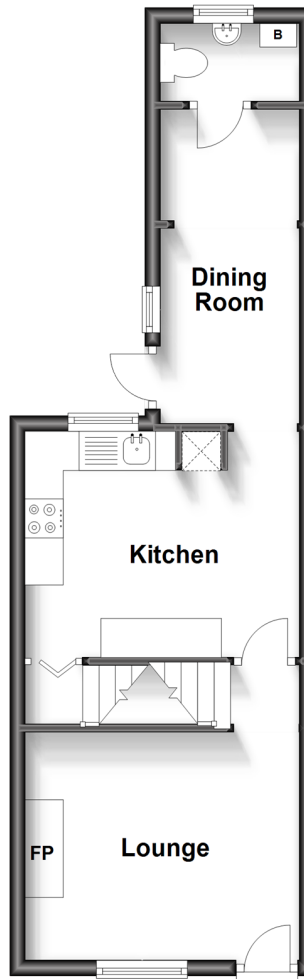
2x  1x  2x 

**Whitehorse Hill,
Chatham, Kent, ME5**

Wards
Helping you move forwards

Split Level Ground Floor

Approx. 33.7 sq. metres (363.0 sq. feet)



Split Level First Floor

Approx. 27.8 sq. metres (298.8 sq. feet)



Accommodation

SPLIT LEVEL GROUND FLOOR

Lounge: 11'8 x 9'5 (3.56m x 2.87m)

Kitchen: 12'0 x 9'5 (3.66m x 2.87m)

Dining Room: 13'6 x 5'11 (4.12m x 1.80m)

Cloak Room: 5'10 x 3'2 (1.78m x 0.97m)

BASEMENT

Cellar Room: 12'1 x 8'2 (3.69m x 2.49m)

SPLIT LEVEL FIRST FLOOR

Landing

Bedroom 1: 12'0 x 9'6 (3.66m x 2.90m)

Bedroom 2: 12'0 x 9'5 (3.66m x 2.87m)

Shower Room: 8'0 x 6'8 (2.44m x 2.03m)

OUTSIDE

Rear Garden



Main features

- Perfect opportunity for buyers looking to create their own dream home
- Requiring basic modernisation
- Handy cellar room perfect for additional space or storage
- Suitable for investors looking to add to a property portfolio due to its close proximity to hospital and town
- Located within easy reach of Chatham station



Nearest Schools

Primary Schools: All Saints C of E Primary, Chatham 0.3 miles, Barnsole Junior School 0.8 miles, Luton Junior School 0.9 miles

Secondary Schools: Victory Academy 1.0 miles, St John



Transport Information

Train Stations: Chatham 1.0 miles, Rochester 1.6 miles, Gillingham 2.0 miles



Address

Whitehorse Hill, Chatham, Kent, ME5



Directions

For directions to this property please contact us.



Wards
Helping you move forwards

Call Chatham Branch 01634 841243 ■ wardsofkent.co.uk



- Legal advice should be taken to verify fixtures/fittings, planning, alterations and/or lease details
- Appliances & services are untested, dimensions are approximate and floor plans are not to scale
- Through a Homewise Home For Life Plan people aged 60+ can secure this property for up to 59% less, by purchasing a Lifetime Lease.



10423284/20230509/AP/AB