

OVER 60?

Secure this property
for up to **59% less!**



Price

£1,000,000

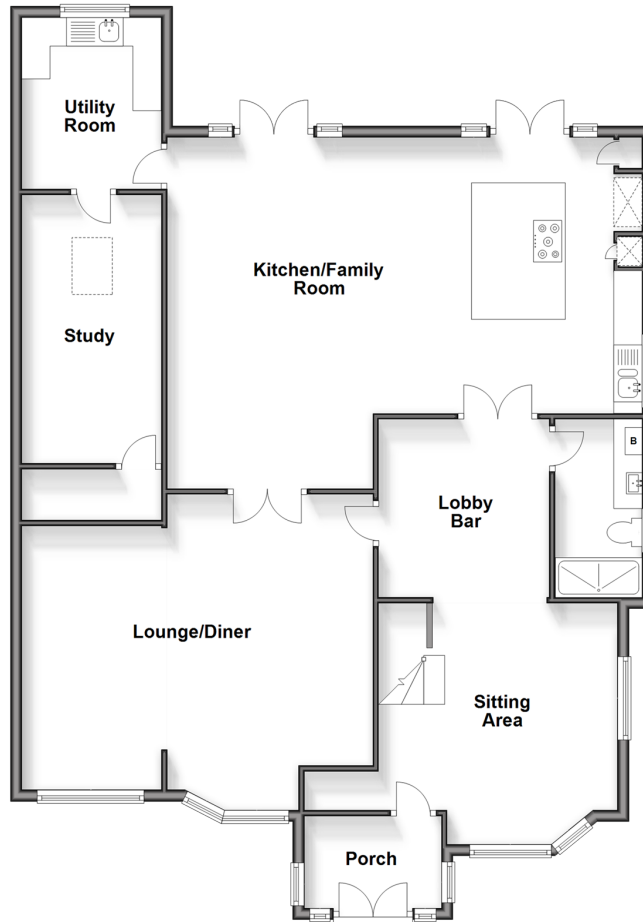
Freehold

5x  4x  3x 

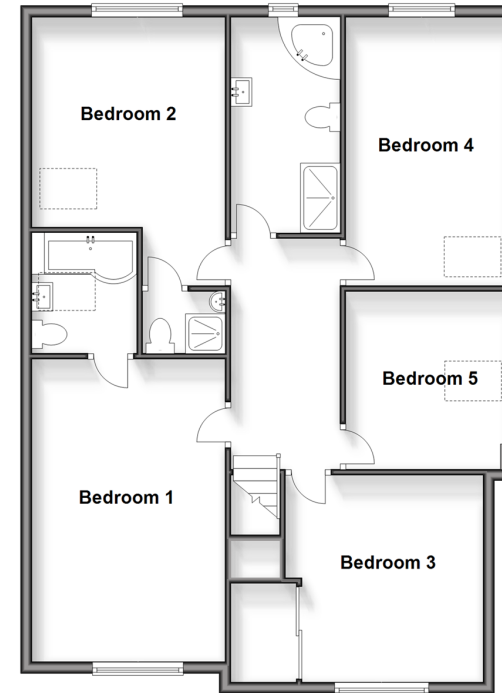
Maidstone Road, Chatham, Kent, ME4

Wards
Helping you move forwards

Ground Floor
Approx. 137.6 sq. metres (1480.7 sq. feet)



First Floor
Approx. 95.3 sq. metres (1025.3 sq. feet)



Accommodation

GROUND FLOOR

Porch
Sitting Area: 14'11 x 11'9 (4.55m x 3.58m)
Lobby Bar: 10'2 x 9'1 (3.10m x 2.77m)
Shower Room
Kitchen/Family Room: 27'5 x 20'0 (8.36m x 6.10m)
Lounge/Diner: 20'5 x 16'11 (6.23m x 5.16m)
Utility Room: 10'4 x 7'11 (3.15m x 2.41m)
Study: 15'3 x 7'8 (4.65m x 2.34m)

FIRST FLOOR

Landing
Bedroom 1: 15'4 x 11'11 (4.68m x 3.63m)
En-suite Bathroom
Bedroom 2: 12'1 x 11'4 (3.69m x 3.46m)
En-suite Shower Room
Bedroom 3: 15'9 x 8'7 (4.80m x 2.62m)
Bedroom 4: 12'0 x 11'10 (3.66m x 3.61m)
Bedroom 5: 10'4 x 8'11 (3.15m x 2.72m)
Bathroom

OUTSIDE

Gated Driveway
Front Garden
Rear Garden



Main features

- Substantial detached house with a top specification finish throughout
- An excellent executive family home for those who love to entertain
- Generous living space in lounge/diner complimented by sitting and family areas
- Large rear garden, perfect for young children and those who enjoy outside space
- Brilliant location for local schools and road links



Nearest Schools

Primary Schools: Warren Wood Community Primary and Language Unit 0.4 miles, Ridge Meadow Primary 0.5 miles
Secondary Schools: Holcombe Grammar School 0.4 miles, Bradfields School 0.5 miles



Transport Information

Train Stations: Chatham 1.4 miles, Rochester 1.7 miles, Gillingham 2.4 miles



Address

Maidstone Road, Chatham, Kent, ME4



Directions

For directions to this property please contact us.



Wards
Helping you move forwards

Call Chatham Branch 01634 841243 ■ wardsofkent.co.uk



■ Legal advice should be taken to verify fixtures/fittings, planning, alterations and/or lease details ■ Appliances & services are untested, dimensions are approximate and floor plans are not to scale
■ Through a Homewise Home For Life Plan people aged 60+ can secure this property for up to 59% less, by purchasing a Lifetime Lease.



10428060/20231114/BC/BC