



OVER 60?

Secure this property
for up to **59% less!**

Price

£210,000

Freehold

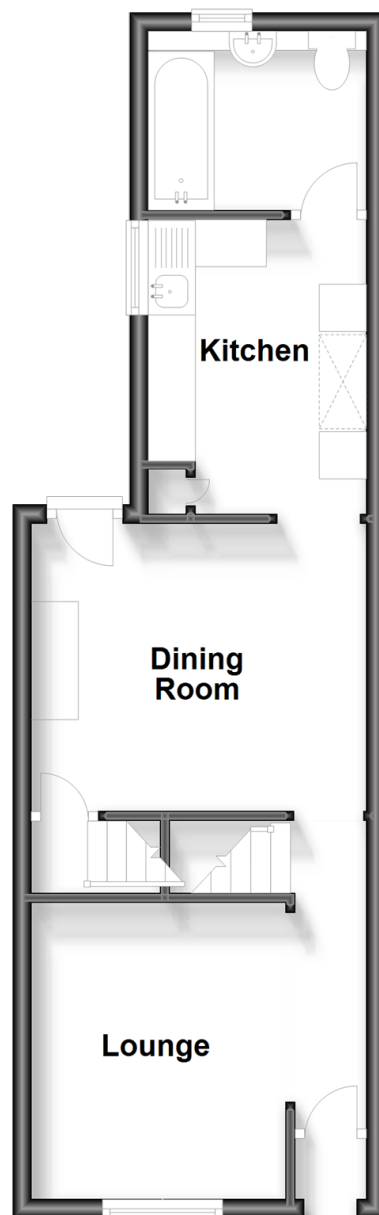
3x  1x  2x 

**Magpie Hall Road,
Chatham, Kent, ME4**

Wards
Helping you move forwards

Ground Floor

Approx. 37.5 sq. metres (404.0 sq. feet)



Split Level First Floor

Approx. 32.9 sq. metres (354.3 sq. feet)



Accommodation

GROUND FLOOR

Lounge: 11'8 x 10'2 (3.56m x 3.10m)

Dining Room: 11'8 x 10'1 (3.56m x 3.08m)

Kitchen: 9'10 x 7'7 (3.00m x 2.31m)

Bathroom

BASEMENT

Cellar

SPLIT LEVEL FIRST FLOOR

Landing

Bedroom 1: 11'7 x 10'3 (3.53m x 3.13m)

Bedroom 2: 11'8 x 10'2 (3.56m x 3.10m)

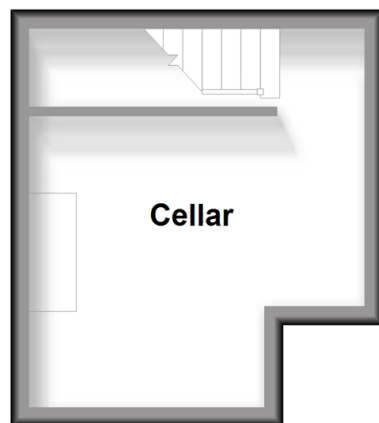
Bedroom 3: 9'9 x 7'7 (2.97m x 2.31m)

OUTSIDE

Rear Garden

Basement

Approx. 13.1 sq. metres (141.2 sq. feet)





Main features

- Victorian terraced house with usable cellar room
- Good size dining room and separate lounge
- Low maintenance rear garden, ideal for a busy couple or family
- Excellent choice for a first time buy or let investment
- Great location for local schools and access to road and rail links



Nearest Schools

Primary Schools: Phoenix Junior Academy 0.3 miles, All Saints C of E Primary, Chatham 0.4 miles, Luton Junior School 0.8 miles
Secondary Schools: Victory Academy 0.3 miles, Chatham South School 1.0 miles, Trinity School 1.2 miles

Transport Information

Train Stations: Chatham 1.6 miles, Rochester 1.7 miles, Gillingham 2.8 miles

Address

Magpie Hall Road, Chatham, Kent, ME4

Directions

For directions to this property please contact us.





Wards
Helping you move forwards

Call Chatham Branch 01634 841243 ■ wardsofkent.co.uk



- Legal advice should be taken to verify fixtures/fittings, planning, alterations and/or lease details
- Appliances & services are untested, dimensions are approximate and floor plans are not to scale
- Through a Homewise Home For Life Plan people aged 60+ can secure this property for up to 59% less, by purchasing a Lifetime Lease.



10428896/20231209/BC/BC