



Price
£1,000,000

Freehold

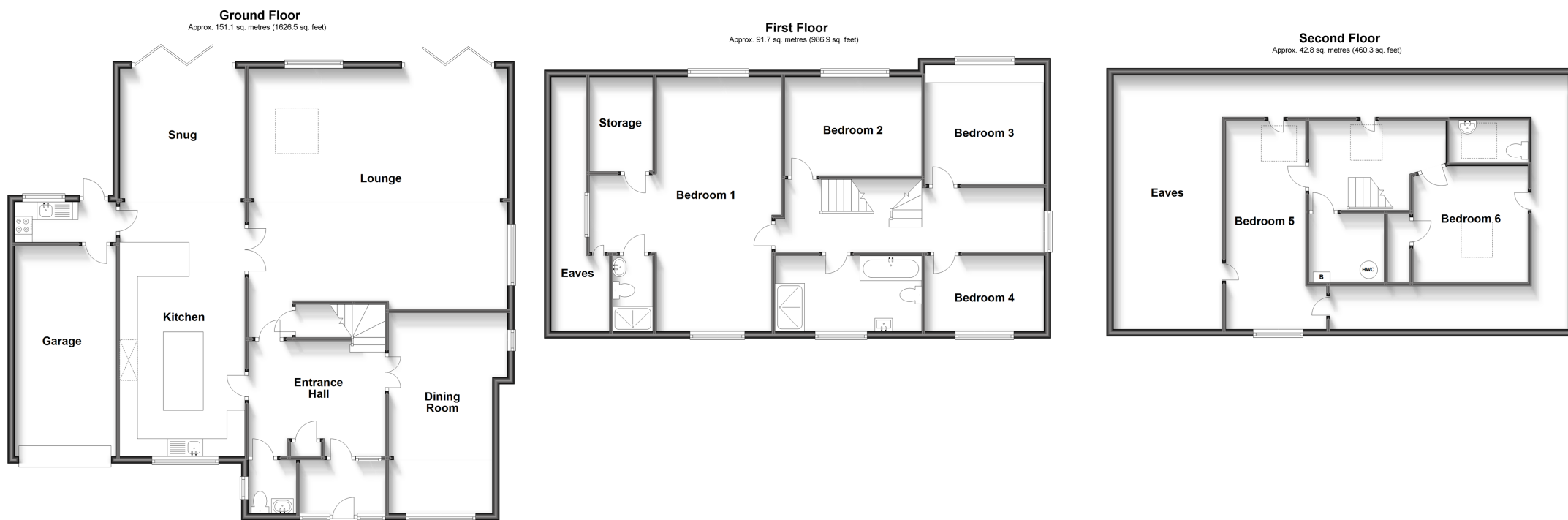
6x  2x  3x 

**Maidstone Road,
Chatham, Kent, ME4**

OVER 60?

Secure this property
for up to **59% less!**

Wards
Helping you move forwards



Accommodation

GROUND FLOOR

Porch: 7'10 x 4'5 (2.39m x 1.35m)
 Entrance Hall: 12'0 x 10'4 (3.66m x 3.15m)
 Cloak Room: 4'3 x 4'2 (1.30m x 1.27m)
 Dining Room: 18'3 x 9'7 (5.57m x 2.92m)
 Lounge : 24'1 x 23'3 (7.35m x 7.09m)
 Kitchen: 23'0 x 11'9 (7.02m x 3.58m)
 Utility Room: 9'3 x 3'7 (2.82m x 1.09m)
 Snug: 12'0 x 11'7 (3.66m x 3.53m)

FIRST FLOOR

Landing
 Bedroom 1: 23'7 x 11'10 (7.19m x 3.61m)
 En-suite Shower Room: 7'8 x 3'6 (2.34m x 1.07m)
 Dressing Area: 7'1 x 6'0 (2.16m x 1.83m)
 Bedroom 2: 12'2 x 9'7 (3.71m x 2.92m)
 Bathroom: 13'1 x 6'3 (3.99m x 1.91m)
 Bedroom 3: 11'3 x 10'10 (3.43m x 3.30m)
 Bedroom 4: 9'7 x 6'5 (2.92m x 1.96m)

SECOND FLOOR

Bedroom 5: 19'1 x 9'2 (5.82m x 2.80m)
 Bedroom 6: 10'9 x 9'9 (3.28m x 2.97m)
 Cloakroom: 6'11 x 3'5 (2.11m x 1.04m)

OUTSIDE

Front & Rear Garden
 Garage & Off Road Parking



Main features

- Stunning detached Period house located in one of Medway's most prestigious locations
- Within walking distance of Chatham station and high speed rail services
- Sold with no forward chain to assist buyers with a fast transaction
- Huge landscaped rear garden with fantastic potential to develop and extend
- Gated entrance with garage and off road parking



Nearest Schools

Primary Schools: Warren Wood Community Primary and Language Unit 0.5 miles, Balfour School
Secondary Schools: Holcombe Grammar School 0.3 miles, Rochester Girls Grammar School, Sir Joesph Williams Mathematical School,



Transport Information

Train Stations: Chatham 1.3 miles, Rochester 1.6 miles, Gillingham 2.2 miles



Address

Maidstone Road, Chatham, Kent, ME4



Directions

For directions to this property please contact us.



Call Chatham Branch 01634 841243 ■ wardsofkent.co.uk



- Legal advice should be taken to verify fixtures/fittings, planning, alterations and/or lease details
- Appliances & services are untested, dimensions are approximate and floor plans are not to scale
- Through a Homewise Home For Life Plan people aged 60+ can secure this property for up to 59% less, by purchasing a Lifetime Lease.



10430414/20230704/BC/AB