



Price
£550,000

Freehold

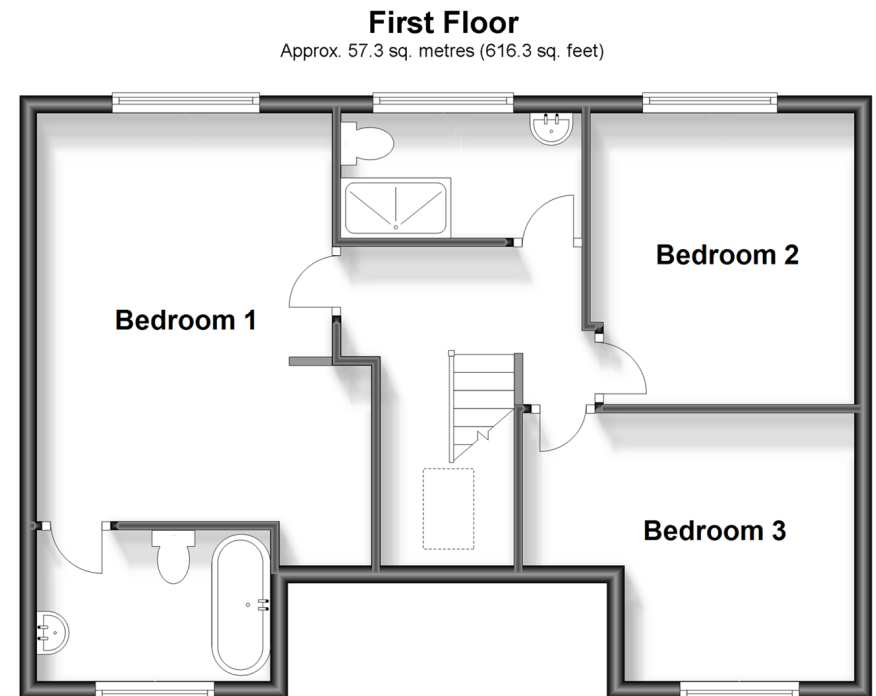
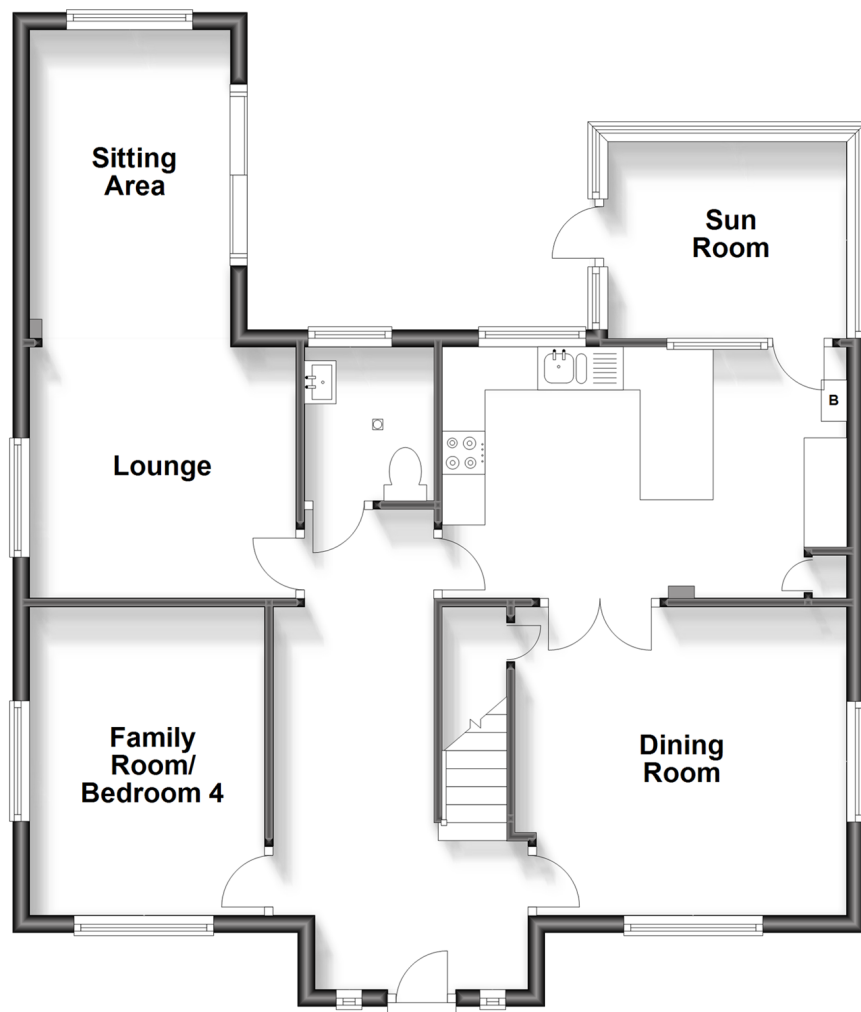
4x  3x  2x 

**Maidstone Road,
Chatham, Kent, ME5**

OVER 60?

Secure this property
for up to **59% less!**

Wards
Helping you move forwards



First Floor
Approx. 57.3 sq. metres (616.3 sq. feet)

Accommodation

GROUND FLOOR

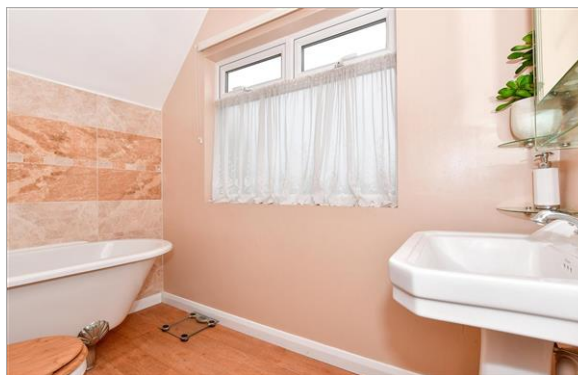
Entrance Hallway
Family Room/Bedroom 4: 11'8 x 9'0 (3.56m x 2.75m)
Lounge: 10'3 x 9'6 (3.13m x 2.90m)
Sitting Area: 11'0 x 7'8 (3.36m x 2.34m)
Kitchen/Breakfast Room: 15'7 x 9'6 (4.75m x 2.90m)
Sun Room: 9'2 x 7'4 (2.80m x 2.24m)
Dining Room: 12'9 x 11'8 (3.89m x 3.56m)
Downstairs Wet Room

FIRST FLOOR

Landing
Bedroom 1: 15'4 x 12'9 (4.68m x 3.89m)
En-suite Bathroom
Bedroom 2: 12'5 x 10'0 (3.79m x 3.05m)
Bedroom 3: 11'1 x 9'8 (3.38m x 2.95m)
Shower Room

OUTSIDE

Front Garden
Driveway
Garage
Rear Garden



Main features

- Detached house with large drive and garage
- Superb versatile space with downstairs family room/bedroom 4
- Downstairs wet room, upstairs family shower and en-suite bathroom
- Brilliant location for a choice local schools and great access for motorway links
- Excellent choice for a family looking for space they can grow into



Nearest Schools

Primary Schools: Horsted Junior School 0.2 miles, Oaklands Junior School 0.6 miles, St Thomas More RC Primary 0.7 miles

Secondary Schools: Walderslade Girls' School 0.7 miles,



Transport Information

Train Stations: Chatham 2.3 miles, Rochester 2.6 miles



Address

Maidstone Road, Chatham, Kent, ME5



Directions

For directions to this property please contact us.



Call Chatham Branch 01634 841243 ■ wardsofkent.co.uk



■ Legal advice should be taken to verify fixtures/fittings, planning, alterations and/or lease details ■ Appliances & services are untested, dimensions are approximate and floor plans are not to scale
■ Through a Homewise Home For Life Plan people aged 60+ can secure this property for up to 59% less, by purchasing a Lifetime Lease.



10430821/20240126/RC/BC