



OVER 60?

Secure this property
for up to **59% less!**

Price
£325,000

Freehold

3x  1x  2x 

**Rochester Street,
Chatham, Kent, ME4**

Wards
Helping you move forwards



Main features

- Large bay fronted Victorian terrace house with garage to rear
- Set over 3 floors, lower ground floor offers own separate entrance
- Superb living space with large lounge/diner and 15' kitchen
- Perfect home for a family or a buy to let investor
- 350 yards walk to Chatham Railway Station

Accommodation

GROUND FLOOR

Entrance Hall
Lounge: 12'5 x 10'8 (3.79m x 3.25m)
Dining Area: 12'4 x 11'4 (3.76m x 3.46m)
Kitchen: 15'2 x 8'2 (4.63m x 2.49m)
Rear Lobby
Bathroom

BASEMENT

Cellar: 14'10 x 13'7 (4.52m x 4.14m)

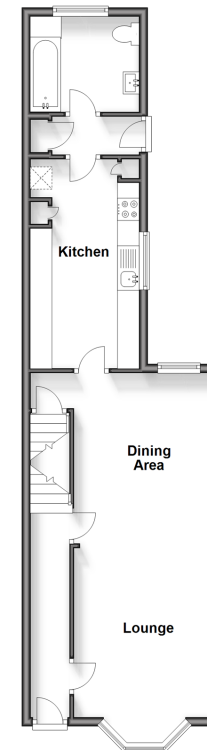
FIRST FLOOR

Landing
Bedroom 1: 14'0 x 12'5 (4.27m x 3.79m)
Bedroom 2: 14'11 x 7'8 (4.55m x 2.34m)
Bedroom 3: 12'4 x 8'8 (3.76m x 2.64m)
Cloakroom

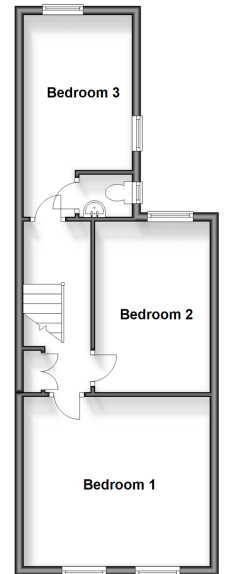
OUTSIDE

Front Garden
Rear Garden
Garage To Rear

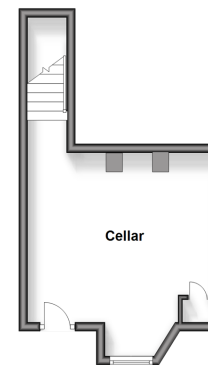
Ground Floor
Approx. 53.6 sq. metres (577.0 sq. feet)



First Floor
Approx. 44.9 sq. metres (483.5 sq. feet)



Basement
Approx. 20.1 sq. metres (216.7 sq. feet)



Call Chatham - 01634 841243 ■ wardsofkent.co.uk

■ Legal advice should be taken to verify fixtures/fittings, planning, alterations and/or lease details
■ Through a Homewise Home For Life Plan people aged 60+ can secure this property for up to 59% less, by purchasing a Lifetime Lease.

■ Appliances & services are untested, dimensions are approximate and floor plans are not to scale



10433100/20240129/AP/BC