



OVER 60?

Secure this property
for up to **59% less!**

Price

£230,000

Freehold

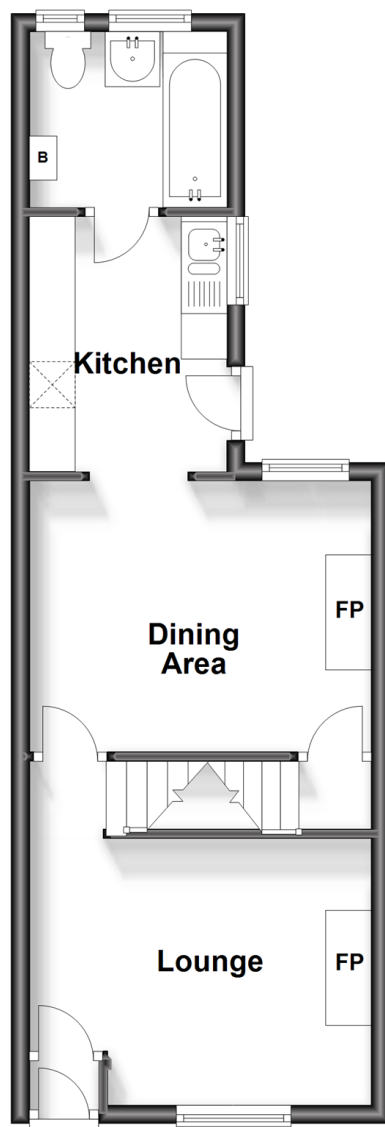
3x  1x  2x 

**Gordon Road, Chatham,
Kent, ME4**

Wards
Helping you move forwards

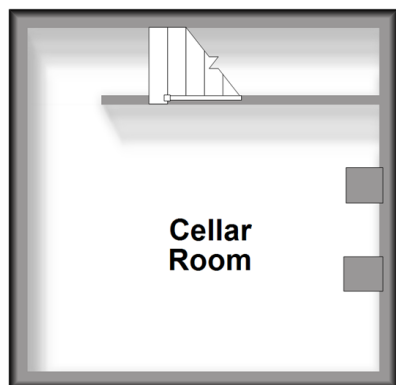
Split Level Ground Floor

Approx. 36.0 sq. metres (387.0 sq. feet)



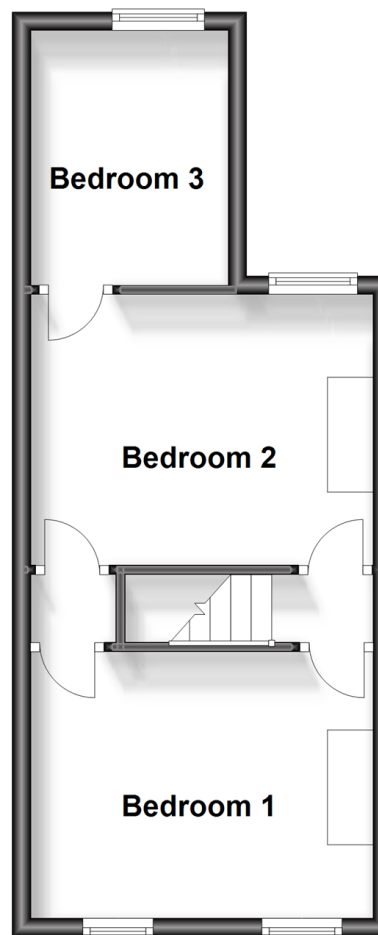
Basement

Approx. 14.4 sq. metres (154.7 sq. feet)



Split Level First Floor

Approx. 31.6 sq. metres (340.2 sq. feet)



Accommodation

GROUND FLOOR

Entrance Hall

Lounge: 12'2 x 9'6 (3.71m x 2.90m)

Dining Room: 12'2 x 9'7 (3.71m x 2.92m)

Kitchen: 9'1 x 7'0 (2.77m x 2.14m)

Shower Room: 7'4 x 6'2 (2.24m x 1.88m)

FIRST FLOOR

Landing

Bedroom 1 : 12'2 x 9'6 (3.71m x 2.90m)

Bedroom 2: 12'2 x 9'7 (3.71m x 2.92m)

Bedroom 3: 9'1 x 7'0 (2.77m x 2.14m)

OUTSIDE

Rear Garden



Main features

- Period house ideal for first time buyers
- Within walking distance of Chatham Station, High Street, schools & shops
- Handy cellar room offering additional storage with potential to develop
- Sold with no forward chain to assist a quick transaction
- Suitable for investors looking to add to a property portfolio



Nearest Schools

Primary Schools: Phoenix Junior Academy 0.3 miles, All Saints C of E Primary, Chatham 0.5 miles, Luton Junior School 0.7 miles

Secondary Schools: Victory Academy 0.3 miles, Chatham



Transport Information

Train Stations: Chatham 1.8 miles, Rochester 1.9 miles, Gillingham 2.7 miles



Address

Gordon Road, Chatham, Kent, ME4



Directions

For directions to this property please contact us.



Wards
Helping you move forwards

Call Chatham Branch 01634 841243 ■ wardsofkent.co.uk



- Legal advice should be taken to verify fixtures/fittings, planning, alterations and/or lease details
- Appliances & services are untested, dimensions are approximate and floor plans are not to scale
- Through a Homewise Home For Life Plan people aged 60+ can secure this property for up to 59% less, by purchasing a Lifetime Lease.



10433198/20231020/LM/AB