



Price
£400,000

Freehold

6x  2x  2x 

**Pagitt Street, Chatham,
Kent, ME4**

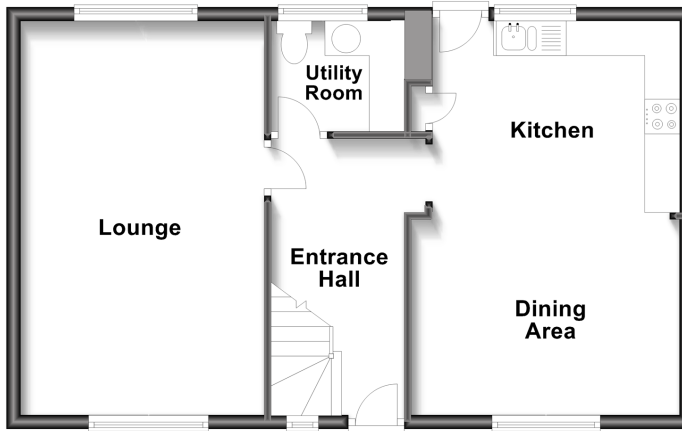
OVER 60?

You could get up to
59% off the price!*

Wards
Helping you move forwards

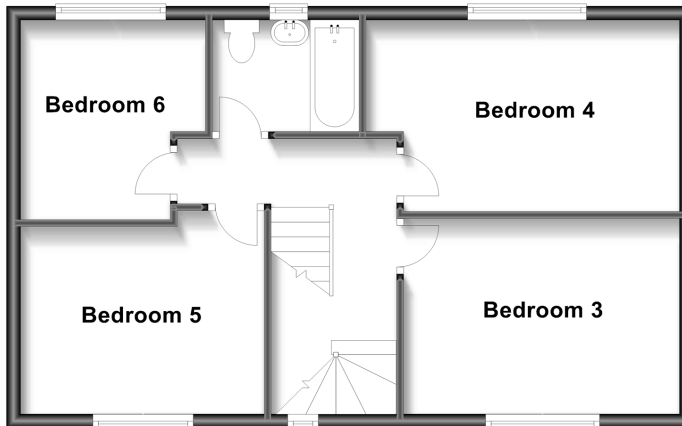
Ground Floor

Approx. 53.6 sq. metres (576.9 sq. feet)



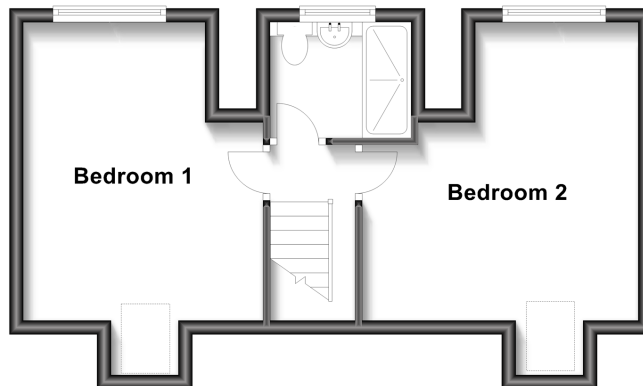
First Floor

Approx. 53.6 sq. metres (576.9 sq. feet)



Second Floor

Approx. 36.8 sq. metres (395.7 sq. feet)



Accommodation

GROUND FLOOR

Entrance Hall

Kitchen / Dining Area: 18'3 x 12'5 (5.57m x 3.79m)

Utility Room: 6'11 x 5'3 (2.11m x 1.60m)

Lounge: 18'5 x 11'9 (5.62m x 3.58m)

FIRST FLOOR

Landing

Bedroom 3: 14'3 x 8'7 (4.35m x 2.62m)

Bedroom 4: 12'11 x 9'4 (3.94m x 2.85m)

Bedroom 5: 11'9 x 9'4 (3.58m x 2.85m)

Bedroom 6: 9'8 x 9'4 (2.95m x 2.85m)

Bathroom

SECOND FLOOR

Landing

Bedroom 1: 14'2 x 13'7 (4.32m x 4.14m)

Shower Room: 7'6 x 4'1 (2.29m x 1.25m)

Bedroom 2: 14'2 x 11'8 (4.32m x 3.56m)

OUTSIDE

Rear Garden

Off Road Parking



Main features

- Sold with no forward chain
- Sought after location
- Short walk away from Chatham station and its high speed rail services to London
- Gated off road parking to front with vehicle access to rear garden, including space for garage subject to planning permission
- Large landscaped garden with summerhouse
- Versatile layout to suit multiple uses



Nearest Schools

Primary Schools: Balfour Junior School 0.2 miles, St Michael's RC Primary 0.3 miles, Phoenix Junior Academy 0.5 miles
Secondary Schools: St John Fisher Catholic Comprehensive School 0.2 miles, Fort Pitt Grammar School 0.4 miles, Holcombe Grammar School 0.5 miles



Transport Information

Train Stations: Chatham 0.4 miles, Rochester 0.8 miles, Strood 1.6 miles



Address

Pagitt Street, Chatham, Kent, ME4



Directions

For directions to this property please contact us.



Wards
Helping you move forwards

Call Chatham Branch 01634 841243 ■ wardsofkent.co.uk



- Legal advice should be taken to verify fixtures/fittings, planning, alterations and/or lease details
- Appliances & services are untested, dimensions are approximate and floor plans are not to scale
- Our Homewise partnership offer a 'Home for Life' plan to buyers over 60, granting a lifetime lease for your protection and reducing the purchase price by up to 59%



10433277/20221103/PN18/AB