



Price
£280,000

Freehold

3x  1x  1x 

**Carpeaux Close,
Chatham, Kent, ME4**

OVER 60?

Secure this property
for up to **59% less!**

Wards
Helping you move forwards



Main features

- Nicely decorated throughout
- Ideal for investors looking to add to portfolio
- Within walking distance to train station
- Close to amenities and local schools
- Perfect for first time buyers looking to get on property ladder.

Accommodation

GROUND FLOOR

Entrance Hall

Lounge: 13'0 x 10'6 (3.97m x 3.20m)

Dining Room: 8'1 x 5'6 (2.47m x 1.68m)

Kitchen: 11'7 x 8'1 (3.53m x 2.47m)

FIRST FLOOR

Landing

Bedroom 1: 13'5 x 10'7 (4.09m x 3.23m)

Bedroom 2: 10'7 x 9'6 (3.23m x 2.90m)

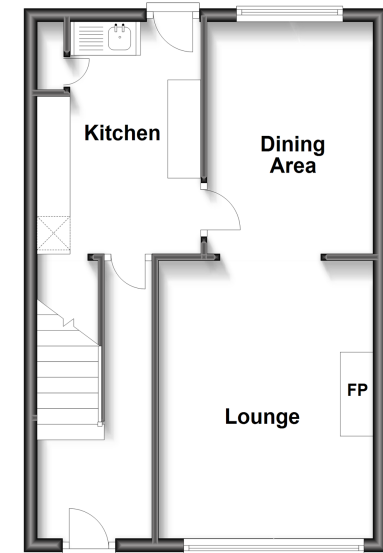
Bedroom 3: 8'8 x 7'0 (2.64m x 2.14m)

Shower Room: 5'8 x 5'7 (1.73m x 1.70m)

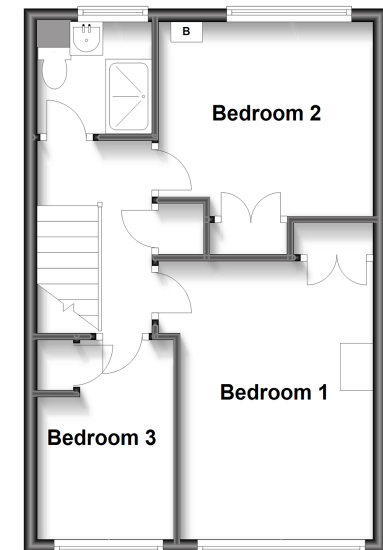
OUTSIDE

Front & Rear Garden

Ground Floor
Approx. 39.2 sq. metres (422.4 sq. feet)



First Floor
Approx. 39.2 sq. metres (422.4 sq. feet)



Call Chatham - 01634 841243 ■ wardsof Kent.co.uk

- Legal advice should be taken to verify fixtures/fittings, planning, alterations and/or lease details
- Appliances & services are untested, dimensions are approximate and floor plans are not to scale
- Through a Homewise Home For Life Plan people aged 60+ can secure this property for up to 59% less, by purchasing a Lifetime Lease.



10433336/20230105/PN18/PN18