



Price
£250,000

Freehold

3x  1x  2x 

**Pagitt Street, Chatham,
Kent, ME4**

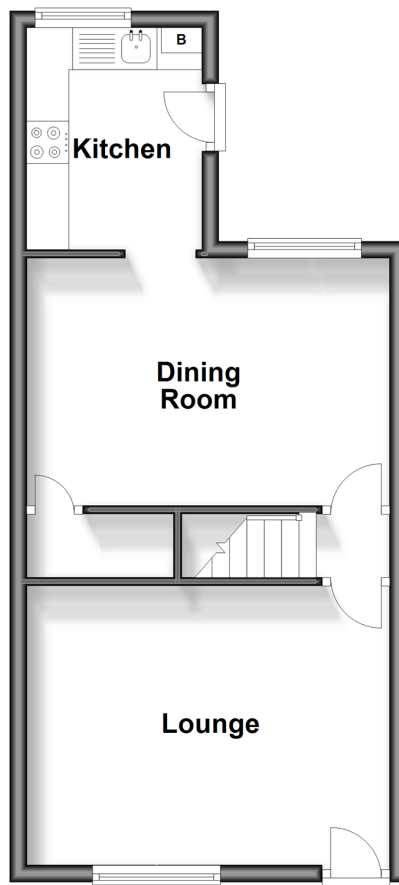
OVER 60?

Secure this property
for up to **59% less!**

Wards
Helping you move forwards

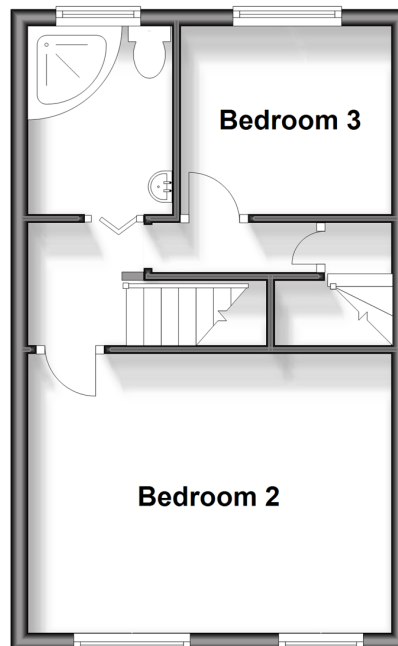
Ground Floor

Approx. 36.7 sq. metres (395.3 sq. feet)



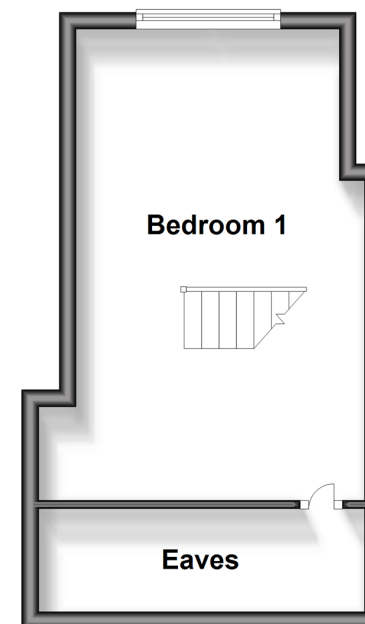
First Floor

Approx. 31.0 sq. metres (334.1 sq. feet)



Second Floor

Approx. 24.2 sq. metres (261.0 sq. feet)



Accommodation

GROUND FLOOR

Lounge: 14'1 x 10'10 (4.30m x 3.30m)

Dining Room: 14'1 x 9'11 (4.30m x 3.02m)

Kitchen: 8'4 x 6'11 (2.54m x 2.11m)

FIRST FLOOR

Landing

Bedroom 2: 14'0 x 10'11 (4.27m x 3.33m)

Bedroom 3: 8'1 x 7'1 (2.47m x 2.16m)

Shower Room

SECOND FLOOR

Bedroom 1: 18'4 x 13'11 (5.59m x 4.24m)

OUTSIDE

Front Garden

Rear Garden



Main features

- Victorian terraced house set over 3 floors
- Excellent condition throughout with separate lounge and dining room
- Upstairs bathroom on first floor and large Bedroom 1 in loft extension
- Perfect for a first time buy or a buy to let investment
- A short walk to popular local schools and Chatham Railway Station



Nearest Schools

Primary Schools: St Michael's RC Primary 0.2 miles, Balfour Junior School 0.3 miles, Phoenix Junior Academy 0.4 miles

Secondary Schools: St John Fisher Catholic



Transport Information

Train Stations: Chatham 0.3 miles, Rochester 0.7 miles, Strood 1.5 miles



Address

Pagitt Street, Chatham, Kent, ME4



Directions

For directions to this property please contact us.



Wards
Helping you move forwards

Call Chatham Branch 01634 841243 ■ wardsofkent.co.uk



■ Legal advice should be taken to verify fixtures/fittings, planning, alterations and/or lease details ■ Appliances & services are untested, dimensions are approximate and floor plans are not to scale
■ Through a Homewise Home For Life Plan people aged 60+ can secure this property for up to 59% less, by purchasing a Lifetime Lease.



10434488/20240313/BC/BC