



OVER 60?

Secure this property
for up to **59% less!**

Price

£250,000

Freehold

3x  1x  1x 

**Salisbury Road,
Chatham, Kent, ME4**

Wards
Helping you move forwards



Main features

- Victorian terrace house in excellent condition throughout
- Brilliant entertaining space with lounge / diner
- Separate bedrooms, shower room downstairs and additional cloakroom from bedroom 3
- Excellent choice for a first time buy or a buy to let investment
- Great location for local schools and access to road and rail links

Accommodation

SPLIT LEVEL GROUND FLOOR

Entrance Hallway
Lounge: 11'7 x 10'4 (3.53m x 3.15m)
Dining Area: 11'2 x 10'8 (3.41m x 3.25m)
Kitchen: 11'1 x 7'9 (3.38m x 2.36m)
Shower Room

BASEMENT

Cellar: 13'1 x 11'6 (3.99m x 3.51m)

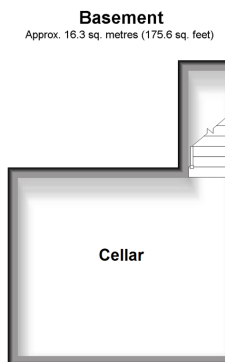
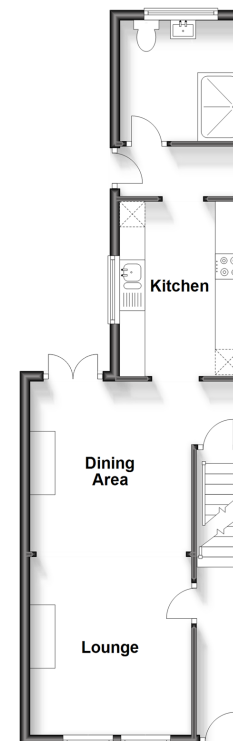
SPLIT LEVEL FIRST FLOOR

Landing
Bedroom 1: 11'6 x 11'6 (3.51m x 3.51m)
Bedroom 2: 11'5 x 8'1 (3.48m x 2.47m)
Bedroom 3: 11'5 x 7'10 (3.48m x 2.39m)
En-suite Cloakroom

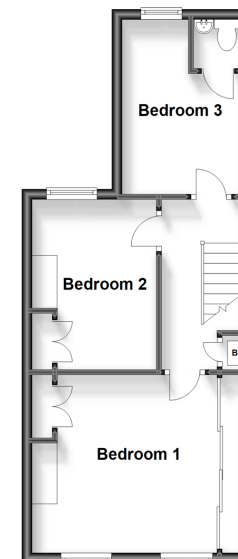
OUTSIDE

Rear Garden

Split Level Ground Floor
Approx. 46.1 sq. metres (496.0 sq. feet)



Split Level First Floor
Approx. 37.5 sq. metres (404.0 sq. feet)



Call Chatham - 01634 841243 ■ wardsofkent.co.uk

■ Legal advice should be taken to verify fixtures/fittings, planning, alterations and/or lease details
■ Through a Homewise Home For Life Plan people aged 60+ can secure this property for up to 59% less, by purchasing a Lifetime Lease.

■ Appliances & services are untested, dimensions are approximate and floor plans are not to scale



10434713/20230819/AP/BC