



Price
£539,000

Freehold

4x  3x  2x 

**Bittern Way, St Marys
Island, Chatham, Kent,
ME4**

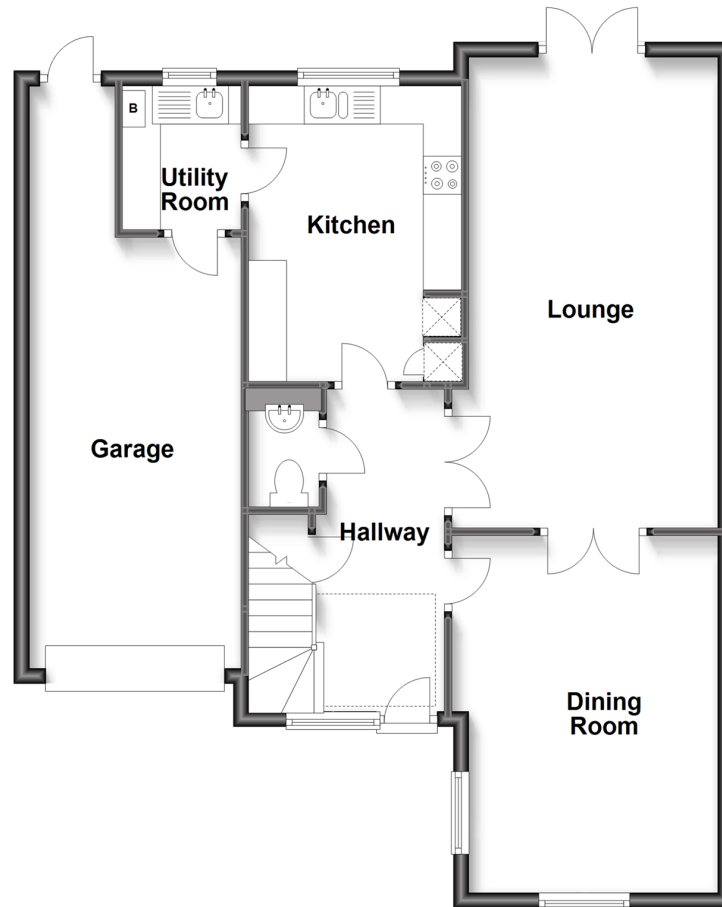
OVER 60?

Secure this property
for up to **59% less!**

Wards
Helping you move forwards

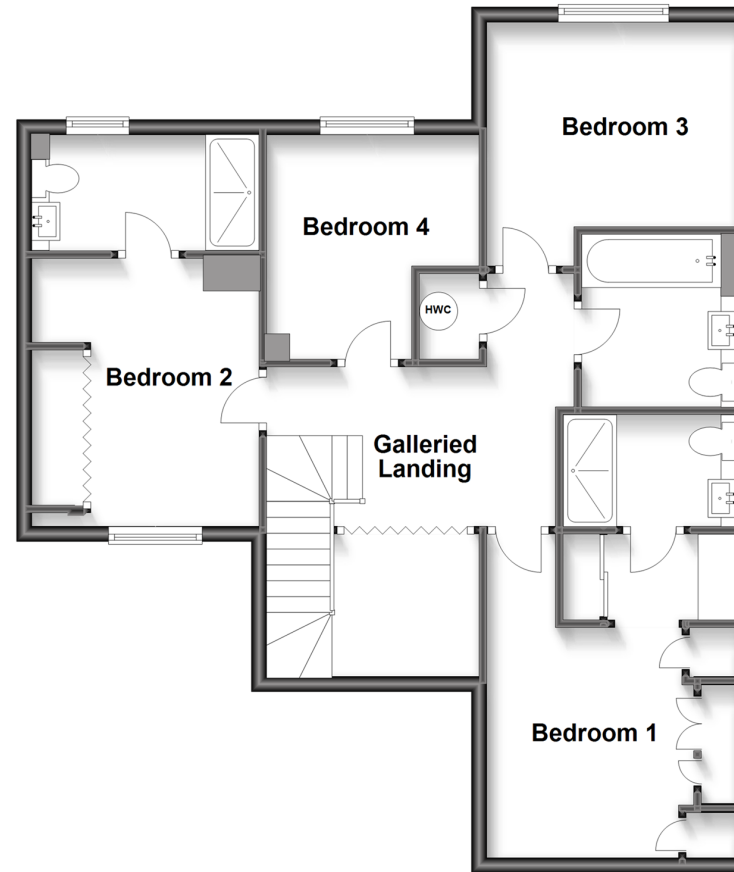
Ground Floor

Approx. 81.7 sq. metres (879.4 sq. feet)



First Floor

Approx. 72.3 sq. metres (778.7 sq. feet)



Accommodation

GROUND FLOOR

Entrance Hall
Dining Room: 13'4 x 11'4 (4.07m x 3.46m)
Lounge: 20'1 x 10'9 (6.13m x 3.28m)
Kitchen: 12'8 x 9'1 (3.86m x 2.77m)
Utility Area: 6'1 x 5'1 (1.86m x 1.55m)
Cloak Room

FIRST FLOOR

Landing
Bedroom 1: 10'7 x 10'6 (3.23m x 3.20m)
En-suite Shower Room
Bathroom: 7'5 x 6'8 (2.26m x 2.03m)
Bedroom 2: 14'1 x 9'5 (4.30m x 2.87m)
En-suite Shower Room: 9'5 x 4'10 (2.87m x 1.47m)
Bedroom 3: 10'2 x 8'2 (3.10m x 2.49m)
Bedroom 4: 9'9 x 9'5 (2.97m x 2.87m)

OUTSIDE

Garage & Off Road Parking
Front & Rear Garden



Main features

- Sold with no forward chain to assist a quick transaction
- Garage and off road parking
- Two en-suites, family bathroom and ground floor cloakroom
- Sunny landscaped rear garden
- Sought after location with riverside walks



Nearest Schools

Primary Schools: St Mary's Island C of E (Aided) Primary 0.3 miles, Burnt Oak Primary 1.0 miles, Hoo St Werburgh Primary and Marlborough Centre 1.0 miles

Secondary Schools: The Hundred of Hoo Comprehensive

Transport Information

Train Stations: Gillingham 1.4 miles, Strood 2.1 miles, Rochester 2.2 miles

Address

Bittern Way, St Marys Island, Chatham, Kent, ME4

Directions

For directions to this property please contact us.





Wards
Helping you move forwards

Call Chatham Branch 01634 841243 ■ wardsofkent.co.uk



■ Legal advice should be taken to verify fixtures/fittings, planning, alterations and/or lease details ■ Appliances & services are untested, dimensions are approximate and floor plans are not to scale
■ Through a Homewise Home For Life Plan people aged 60+ can secure this property for up to 59% less, by purchasing a Lifetime Lease.



10435038/20230316/PN18/AB