



OVER 60?

Secure this property
for up to **59% less!**

Price

£170,000

Leasehold

2x  1x  1x 

**Hards Town, Chatham,
Kent, ME4**

Wards
Helping you move forwards



Main features

- First floor maisonette
- Perfect for first time buyers looking to get on the property ladder
- Suitable for investors
- Shared communal gardens
- Close to transport links, local amenities and schools
- Ideal for investors looking to add to portfolio

Accommodation

FIRST FLOOR

Lounge: 16'4 x 10'6 (4.98m x 3.20m)

Kitchen: 5'9 x 5'8 (1.75m x 1.73m)

Bedroom 1: 13'7 x 10'6 (4.14m x 3.20m)

Bedroom 2: 10'7 x 6'7 (3.23m x 2.01m)

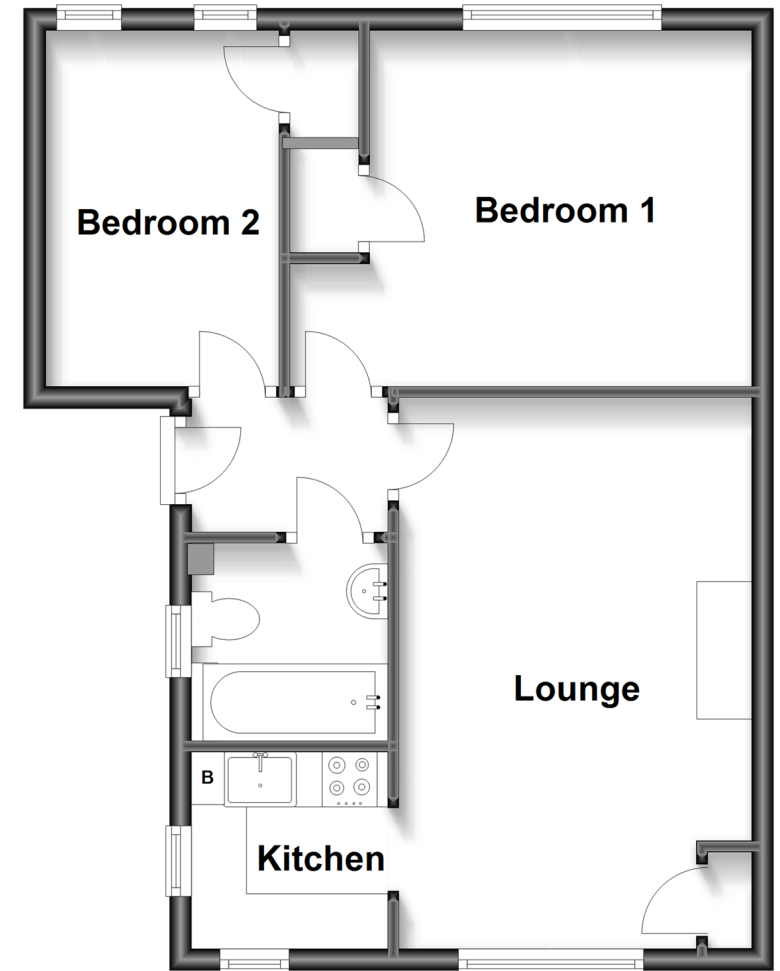
Bathroom: 5'9 x 5'8 (1.75m x 1.73m)

OUTSIDE

Communal Garden

First Floor

Approx. 46.8 sq. metres (504.2 sq. feet)



Call Chatham - 01634 841243 ■ wardsof Kent.co.uk

- Legal advice should be taken to verify fixtures/fittings, planning, alterations and/or lease details
- Appliances & services are untested, dimensions are approximate and floor plans are not to scale
- Through a Homewise Home For Life Plan people aged 60+ can secure this property for up to 59% less, by purchasing a Lifetime Lease.



10435085/20230718/PN18/PN18