



OVER 60?

Secure this property
for up to **59% less!**

Price
£210,000

Freehold

3x  1x  1x 

**Ingle Road, Chatham,
Kent, ME4**

Wards
Helping you move forwards

Main features

- Terrace Victorian house in need of some updating
- Separate bedrooms and a great sized lounge/diner
- Great for a first time buyer looking to make the home their own
- Potential buy to let investment
- Walking distance to town, railway station and local schools

Accommodation

GROUND FLOOR

Lounge/Diner: 23'8 x 13'7 (7.22m x 4.14m)

Kitchen: 9'9 x 8'7 (2.97m x 2.62m)

Rear Lobby

Bathroom

FIRST FLOOR

Landing

Bedroom 1: 12'3 x 9'11 (3.74m x 3.02m)

Bedroom 2: 13'4 x 8'5 (4.07m x 2.57m)

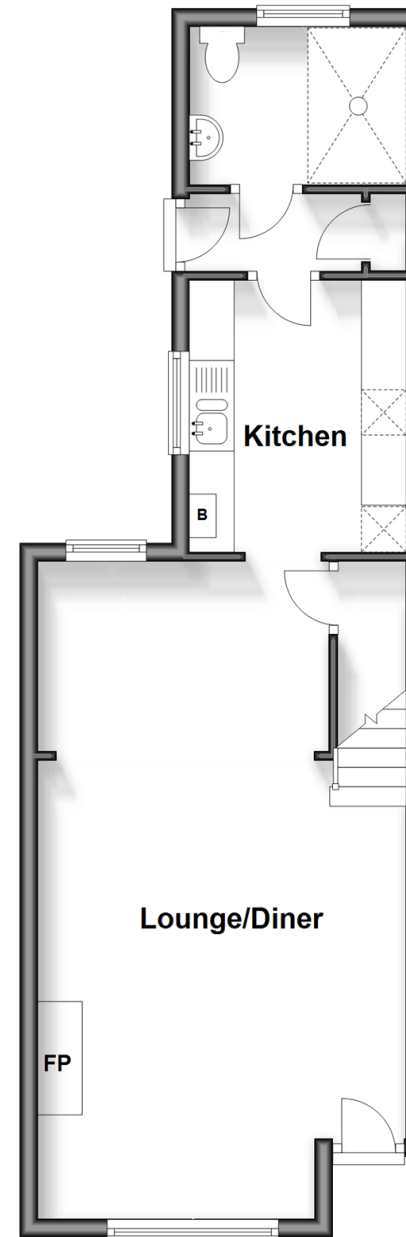
Bedroom 3: 9'9 x 9'8 (2.97m x 2.95m)

OUTSIDE

Rear Garden

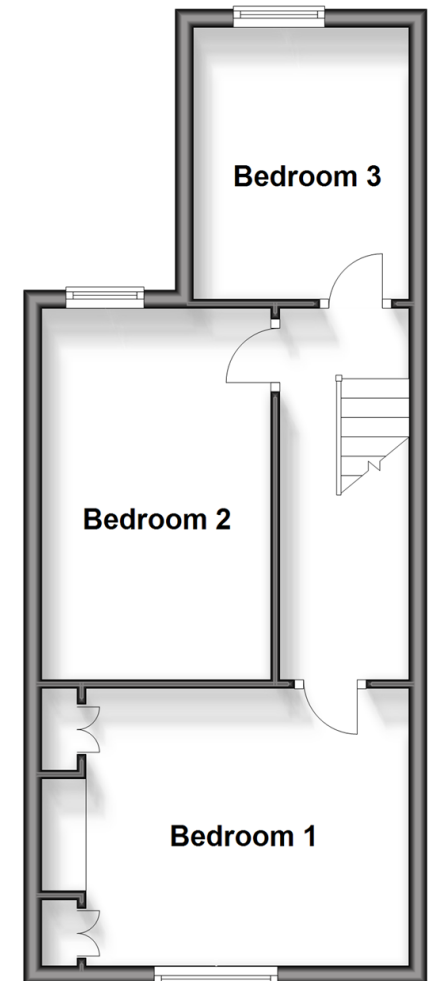
Split Level Ground Floor

Approx. 43.3 sq. metres (466.1 sq. feet)



First Floor

Approx. 37.4 sq. metres (402.8 sq. feet)



Call Chatham - 01634 841243 ■ wardsofkent.co.uk

■ Legal advice should be taken to verify fixtures/fittings, planning, alterations and/or lease details
■ Through a Homewise Home For Life Plan people aged 60+ can secure this property for up to 59% less, by purchasing a Lifetime Lease.

■ Appliances & services are untested, dimensions are approximate and floor plans are not to scale