



Price
£330,000

Freehold

3x  1x  2x 

**Westmount Avenue,
Chatham, Kent, ME4**

OVER 60?

Secure this property
for up to **59% less!**

Wards
Helping you move forwards



Main features

- Beautifully present period house
- Off road parking to the front
- Conservatory overlooking landscaped garden
- Located minutes away from Chatham Station with high speed rail services to London
- Ideal for families with children with great schools on your doorstep.

Accommodation

GROUND FLOOR

Entrance Hall
 Lounge: 14'3 x 12'9 (4.35m x 3.89m)
 Kitchen: 8'11 x 7'5 (2.72m x 2.26m)
 Dining Area: 11'11 x 10'6 (3.63m x 3.20m)
 Conservatory: 8'8 x 8'5 (2.64m x 2.57m)

FIRST FLOOR

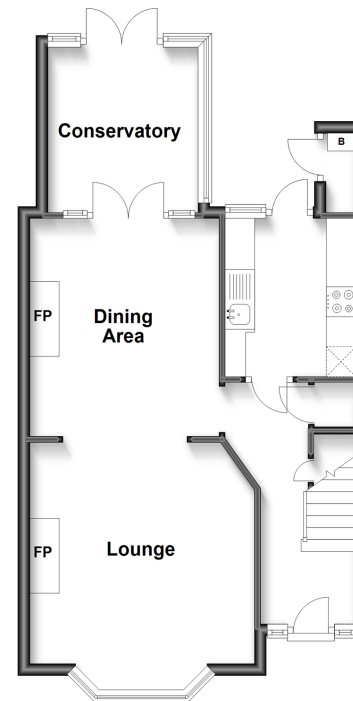
Landing
 Bedroom 1: 14'2 x 10'7 (4.32m x 3.23m)
 Bedroom 2: 11'11 x 10'8 (3.63m x 3.25m)
 Bedroom 3: 8'6 x 7'4 (2.59m x 2.24m)
 Bathroom: 5'4 x 4'8 (1.63m x 1.42m)
 Separate Toilet

OUTSIDE

Rear Garden
 Off Road Parking

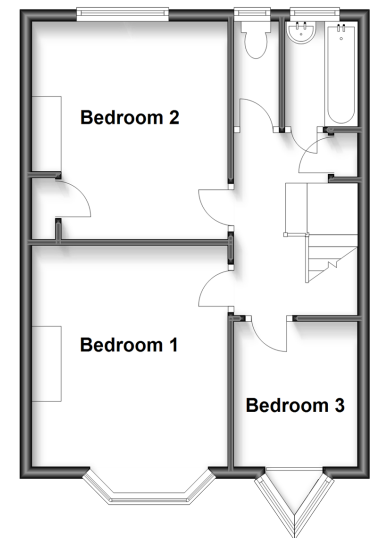
Ground Floor

Approx. 47.5 sq. metres (511.8 sq. feet)



First Floor

Approx. 41.8 sq. metres (450.0 sq. feet)



Call Chatham - 01634 841243 ■ wardsofkent.co.uk

■ Legal advice should be taken to verify fixtures/fittings, planning, alterations and/or lease details
 ■ Through a Homewise Home For Life Plan people aged 60+ can secure this property for up to 59% less, by purchasing a Lifetime Lease.

■ Appliances & services are untested, dimensions are approximate and floor plans are not to scale