



OVER 60?

Secure this property
for up to **59% less!**

Price

£240,000

Freehold

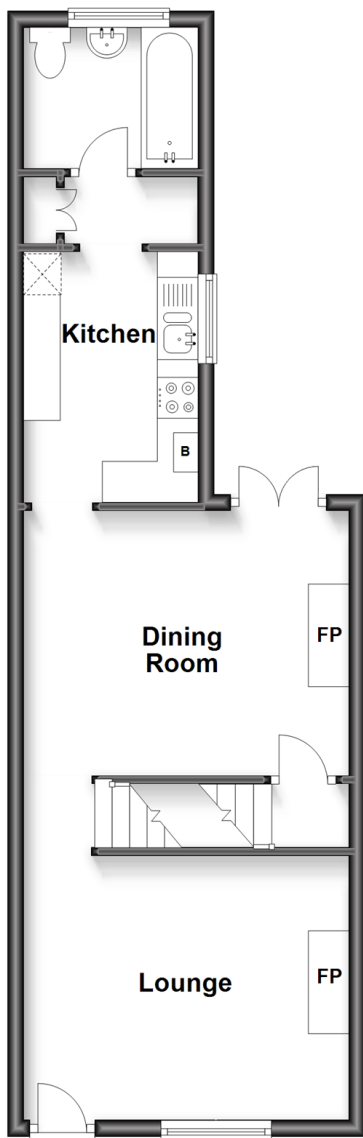
3x  1x  2x 

**Scotts Terrace,
Chatham, Kent, ME4**

Wards
Helping you move forwards

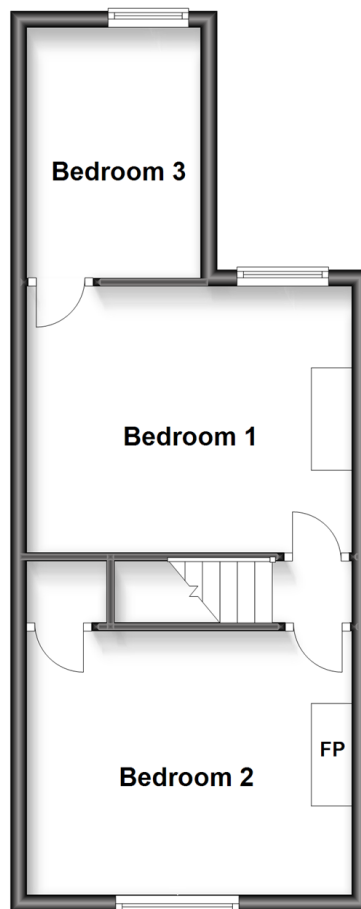
Split Level Ground Floor

Approx. 42.4 sq. metres (456.6 sq. feet)



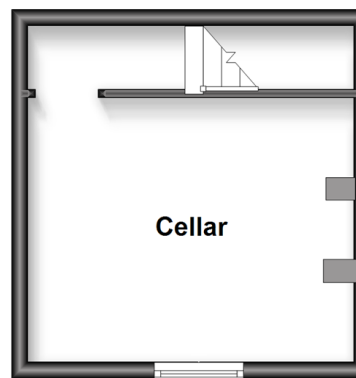
Split Level First Floor

Approx. 36.6 sq. metres (393.4 sq. feet)



Basement

Approx. 16.4 sq. metres (176.7 sq. feet)



Accommodation

GROUND FLOOR

Lounge: 13'2 x 10'5 (4.02m x 3.18m)

Dining Room: 13'2 x 10'7 (4.02m x 3.23m)

Kitchen: 10'1 x 7'2 (3.08m x 2.19m)

Bathroom: 6'7 x 3'8 (2.01m x 1.12m)

BASEMENT

Cellar Room: 13'0 x 10'3 (3.97m x 3.13m)

FIRST FLOOR

Landing

Bedroom 1: 13'2 x 10'5 (4.02m x 3.18m)

Bedroom 2: 13'2 x 10'7 (4.02m x 3.23m)

Bedroom 3: 10'0 x 7'2 (3.05m x 2.19m)

OUTSIDE

Rear Garden



Main features

- Sold with no forward chain
- Perfect for buyers looking to get on the property ladder
- Located within walking distance of Chatham station and town centre
- Useful cellar room, and fully boarded loft
- Great addition for any investors looking to add to portfolio



Nearest Schools

Primary Schools: St Michael's RC Primary 0.1 miles, Phoenix Junior Academy 0.3 miles, Balfour Junior School 0.4 miles

Secondary Schools: St John Fisher Catholic



Transport Information

Train Stations: Chatham 0.3 miles, Rochester 0.7 miles, Gillingham 1.5 miles



Address

Scotts Terrace, Chatham, Kent, ME4



Directions

For directions to this property please contact us.



Call Chatham Branch 01634 841243 ■ wardsofkent.co.uk



- Legal advice should be taken to verify fixtures/fittings, planning, alterations and/or lease details
- Appliances & services are untested, dimensions are approximate and floor plans are not to scale
- Through a Homewise Home For Life Plan people aged 60+ can secure this property for up to 59% less, by purchasing a Lifetime Lease.



10435236/20230511/PN18/PN18