



**OVER 60?**

Secure this property  
for up to **59% less!**

**Price**

**£235,000**

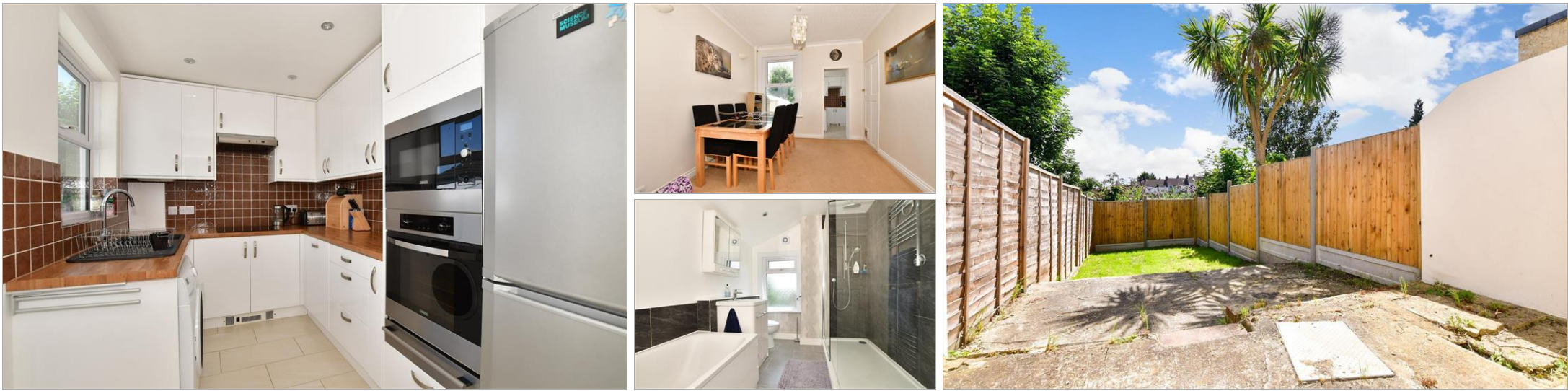
**Freehold**

3x  1x  1x 

**Gordon Road, Chatham,  
Kent, ME4**

*Wards*  
Helping you move forwards





## Main features

- **Victorian terraced house in excellent condition**
- **Separate bedrooms & beautiful upstairs bathroom**
- **Easy to maintain rear garden**
- **Perfect for a first time buy or a buy-to-let investment**
- **Great location for local schools and good access to road and rail links**

## Accommodation

### GROUND FLOOR

Lounge: 12'2 x 11'5 (3.71m x 3.48m)  
Dining Area: 11'2 x 9'5 (3.41m x 2.87m)  
Kitchen: 10'7 x 7'3 (3.23m x 2.21m)

### BASEMENT

Cellar: 12'3 x 10'7 (3.74m x 3.23m)

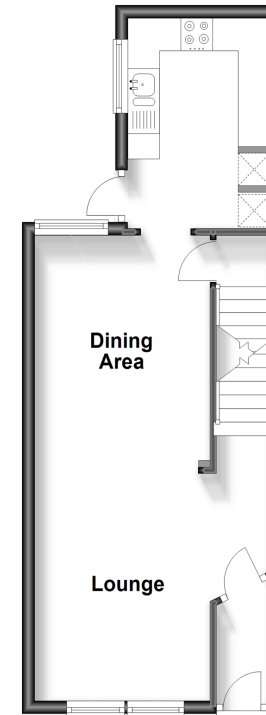
### FIRST FLOOR

Landing  
Bedroom 1: 11'5 x 9'9 (3.48m x 2.97m)  
Bedroom 2: 11'6 x 7'5 (3.51m x 2.26m)  
Bedroom 3: 8'7 x 7'3 (2.62m x 2.21m)  
Bathroom

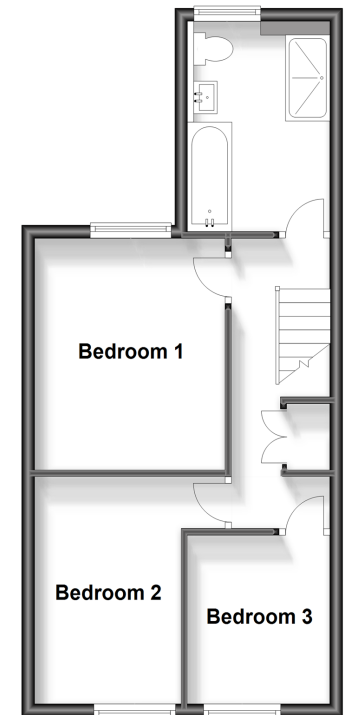
### OUTSIDE

Rear Garden

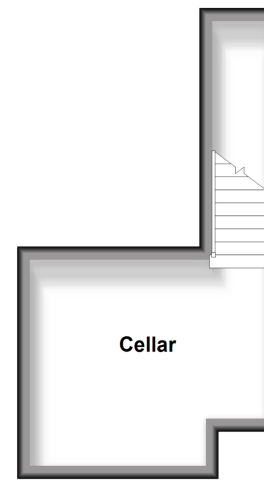
**Ground Floor**  
Approx. 34.5 sq. metres (371.5 sq. feet)



**First Floor**  
Approx. 40.7 sq. metres (438.4 sq. feet)



**Basement**  
Approx. 14.2 sq. metres (152.5 sq. feet)



**Call Chatham - 01634 841243 ■ [wardsofkent.co.uk](http://wardsofkent.co.uk)**

■ Legal advice should be taken to verify fixtures/fittings, planning, alterations and/or lease details  
■ Through a Homewise Home For Life Plan people aged 60+ can secure this property for up to 59% less, by purchasing a Lifetime Lease.

■ Appliances & services are untested, dimensions are approximate and floor plans are not to scale