



Price
£265,000

Freehold

2x  1x  1x 

**Chatham Grove,
Chatham, Kent, ME4**

OVER 60?

Secure this property
for up to **59% less!**

Wards
Helping you move forwards



Main features

- Wonderful opportunity for first time buyers looking to get on the property ladder
- Quiet cul-de-sac location close to parks & shops
- Located within walking distance of Chatham station, its high speed rail service to London
- Immaculately presented throughout with brand new boiler and shower allowing buyers to move straight in with no work needed
- Sold chain free to assist a quick transaction.

Accommodation

GROUND FLOOR

Entrance Hall

Lounge: 15'3 x 13'11 (4.65m x 4.24m)

Kitchen/Diner: 14'2 x 11'8 (4.32m x 3.56m)

FIRST FLOOR

Landing

Bedroom 1: 13'11 x 12'7 (4.24m x 3.84m)

Bedroom 2: 11'5 x 7'11 (3.48m x 2.41m)

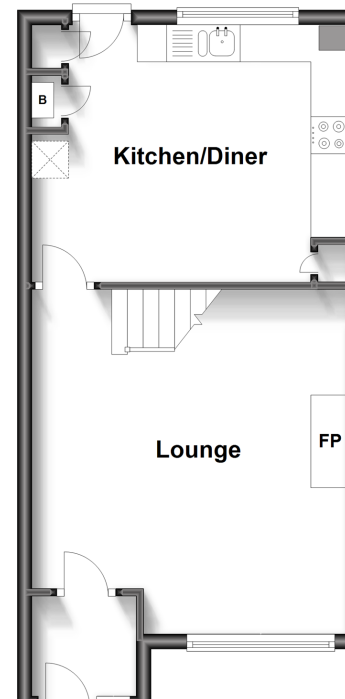
Bathroom: 7'10 x 5'7 (2.39m x 1.70m)

OUTSIDE

Front & Rear

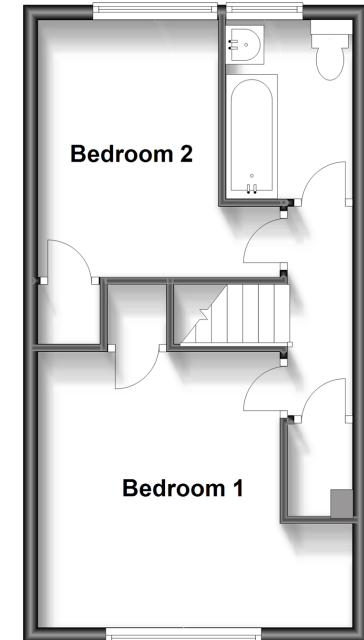
Ground Floor

Approx. 36.6 sq. metres (393.7 sq. feet)



First Floor

Approx. 35.3 sq. metres (380.0 sq. feet)



Call Chatham - 01634 841243 ■ wardsofkent.co.uk

■ Legal advice should be taken to verify fixtures/fittings, planning, alterations and/or lease details
 ■ Through a Homewise Home For Life Plan people aged 60+ can secure this property for up to 59% less, by purchasing a Lifetime Lease.

■ Appliances & services are untested, dimensions are approximate and floor plans are not to scale