



OVER 60?

Secure this property
for up to **59% less!**

Price

£725,000

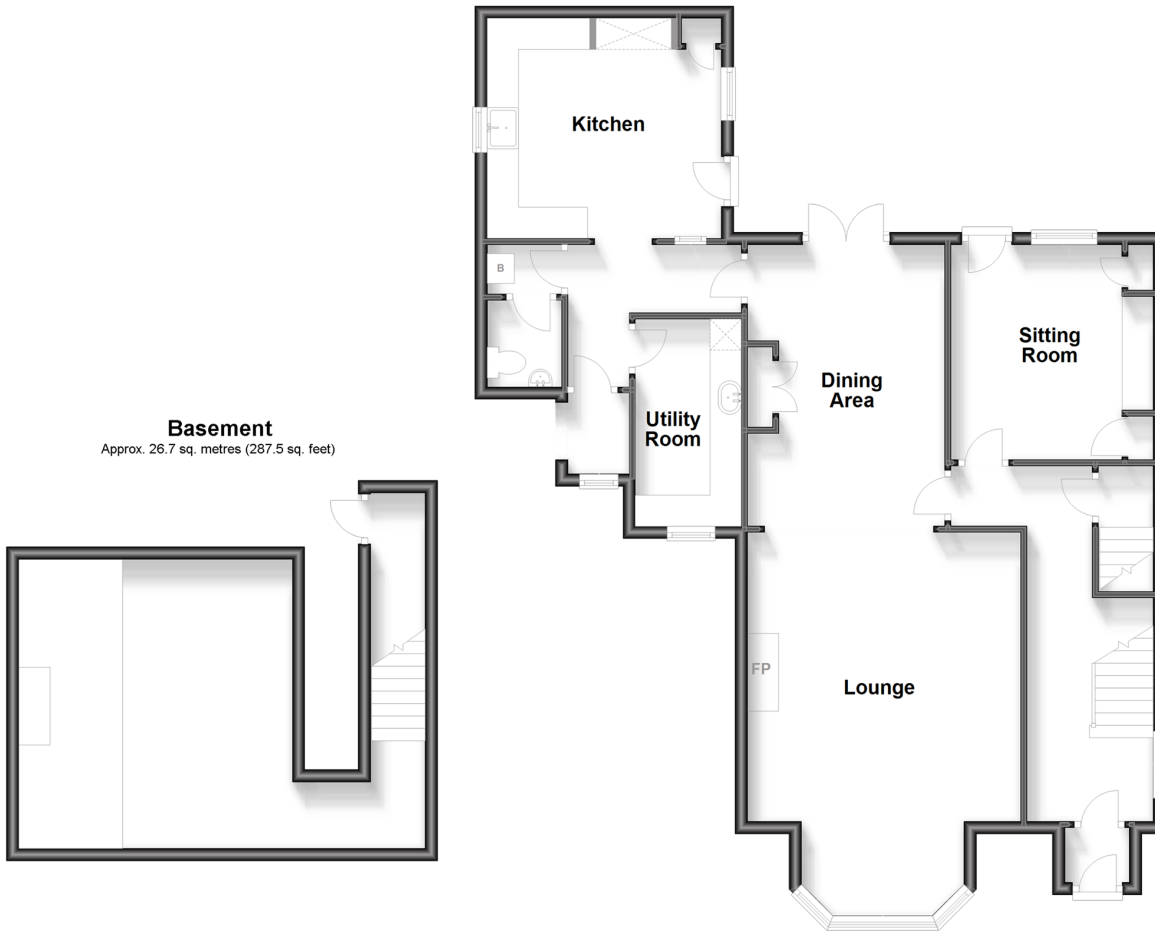
Freehold

4x  1x  2x 

**Queens Road, Chatham,
Kent, ME5**

Wards
Helping you move forwards

Split Level Ground Floor
Approx. 94.0 sq. metres (1011.6 sq. feet)



Split Level First Floor
Approx. 89.3 sq. metres (960.7 sq. feet)



Accommodation

SPLIT LEVEL GROUND FLOOR

Entrance Hallway
Lounge: 14'11 x 14'4 (4.55m x 4.37m)
Dining Area: 14'9 x 10'4 (4.50m x 3.15m)
Sitting Room: 11'5 x 9'1 (3.48m x 2.77m)
Rear Lobby

Utility Room: 10'3 x 4'7 (3.13m x 1.40m)
Boiler Room
Downstairs Cloakroom
Kitchen: 12'0 x 11'3 (3.66m x 3.43m)

BASEMENT

Cellar: 14'11 x 9'0 (4.55m x 2.75m)

SPLIT LEVEL FIRST FLOOR

Landing
Bedroom 1: 17'6 x 15'0 (5.34m x 4.58m)
Walk-in Wardrobe
Bedroom 2: 11'5 x 10'6 (3.48m x 3.20m)
Bedroom 3: 11'5 x 10'4 (3.48m x 3.15m)
Bedroom 4: 8'0 x 5'11 (2.44m x 1.80m)
Bathroom: 11'11 x 10'5 (3.63m x 3.18m)

OUTSIDE

Front Garden
Rear Garden
Driveway



Main features

- Substantial Victorian detached house bursting with character
- Lovingly restored and beautifully presented to create a wonderful family home
- Generous, grand lounge and dining area complimented by separate cosy sitting room
- Stunning landscaped tiered classical rear garden
- A hidden gem next to green space but with great access to town and amenities



Nearest Schools

Primary Schools: Luton Junior School 0.4 miles, Woodlands Primary 1.0 miles, All Saints C of E Primary, Chatham 1.1 miles
Secondary Schools: Chatham Grammar School for Girls 1.0 miles, Victory Academy 1.2 miles



Transport Information

Train Stations: Chatham 1.7 miles, Gillingham 1.9 miles, Rochester 2.3 miles



Address

Queens Road, Chatham, Kent, ME5



Directions

For directions to this property please contact us.



Wards
Helping you move forwards

Call Chatham Branch 01634 841243 ■ wardsofkent.co.uk



■ Legal advice should be taken to verify fixtures/fittings, planning, alterations and/or lease details ■ Appliances & services are untested, dimensions are approximate and floor plans are not to scale
■ Through a Homewise Home For Life Plan people aged 60+ can secure this property for up to 59% less, by purchasing a Lifetime Lease.



10435313/20230731/BC/BC