



Price
£375,000

Freehold

4x  1x  1x 

**Sailmakers Court,
Shipwrights Avenue,
Chatham, Kent, ME4**

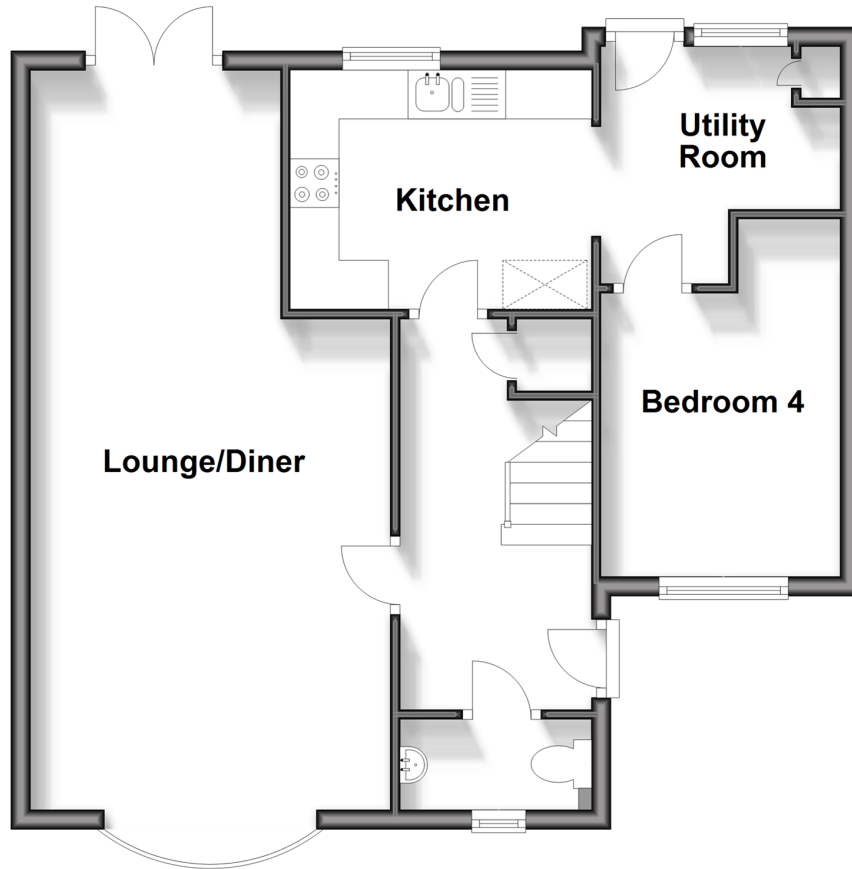
OVER 60?

Secure this property
for up to **59% less!**

Wards
Helping you move forwards

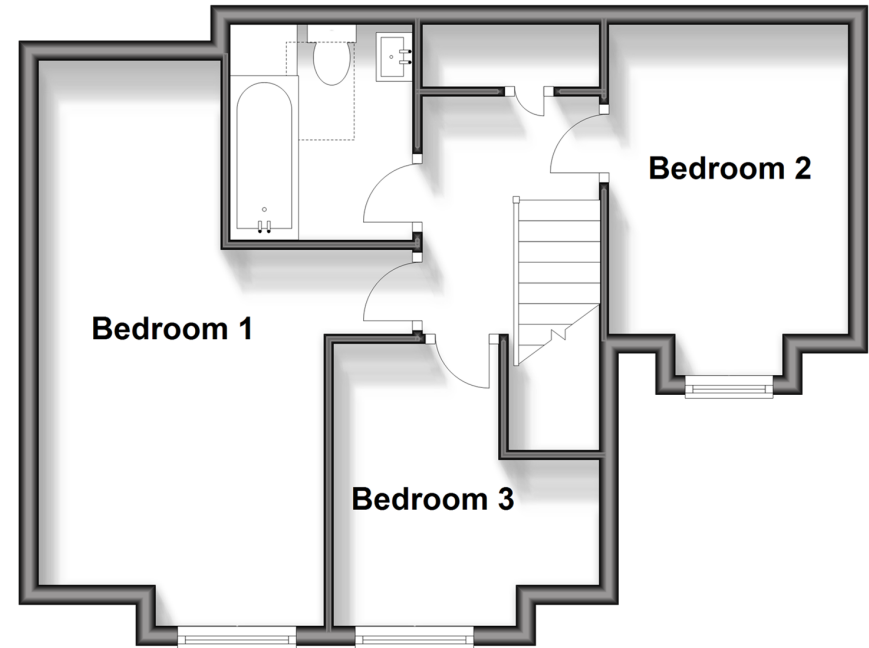
Ground Floor

Approx. 57.7 sq. metres (621.0 sq. feet)



First Floor

Approx. 42.3 sq. metres (455.2 sq. feet)



Accommodation

GROUND FLOOR

Entrance Hallway
Downstairs Cloakroom
Living Area: 16'4 x 12'3 (4.98m x 3.74m)
Dining Area: 8'5 x 8'4 (2.57m x 2.54m)
Kitchen: 10'3 x 8'8 (3.13m x 2.64m)
Utility Room: 7'11 x 7'0 (2.41m x 2.14m)
Bedroom 4: 9'8 x 7'11 (2.95m x 2.41m)

FIRST FLOOR

Landing
Bedroom 1: 12'8 x 9'5 (3.86m x 2.87m) plus 6'4 x 5'11 (1.93m x 1.80m)
Bedroom 2: 10'5 x 8'0 (3.18m x 2.44m)
Bedroom 3: 9'8 x 9'0 (2.95m x 2.75m)
Bathroom

OUTSIDE

Driveway
Rear Garden



Main features

- Modern semi-detached house with driveway for 3-4 vehicles
- Versatile living space with bedroom 4/home office on ground floor
- Great sized lounge/diner to entertain and separate kitchen and utility room
- Brilliant location for a choice of local schools
- Excellent choice for a family looking for a space they can grow in to



Nearest Schools

Primary Schools: Luton Junior School 0.2 miles, Phoenix Junior Academy 0.3 miles, All Saints C of E Primary, Chatham 0.4 miles

Secondary Schools: Victory Academy 0.2 miles, Chatham



Transport Information

Train Stations: Chatham 0.9 miles, Gillingham 1.2 miles, Rochester 1.4 miles



Address

Sailmakers Court, Shipwrights Avenue, Chatham, Kent, ME4



Directions

For directions to this property please contact us.



Wards
Helping you move forwards

Call Chatham Branch 01634 841243 ■ wardsofkent.co.uk



■ Legal advice should be taken to verify fixtures/fittings, planning, alterations and/or lease details ■ Appliances & services are untested, dimensions are approximate and floor plans are not to scale
■ Through a Homewise Home For Life Plan people aged 60+ can secure this property for up to 59% less, by purchasing a Lifetime Lease.



10435316/20240205/BC/BC