



OVER 60?

Secure this property
for up to **59% less!**

Price

£350,000

Freehold

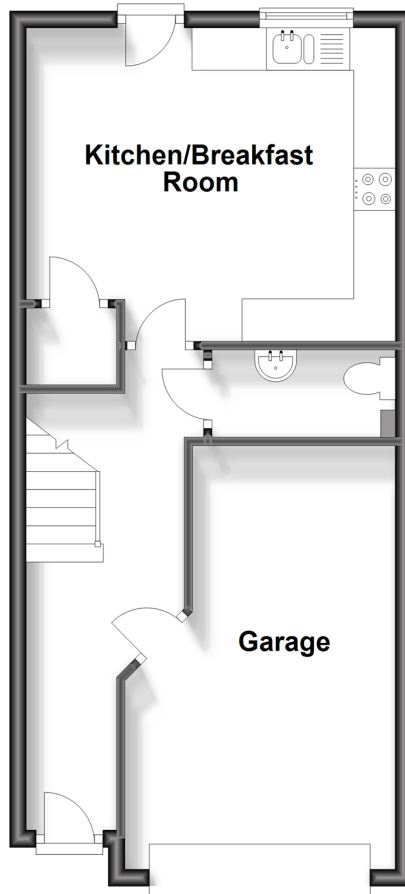
4x  3x  1x 

**Ruth Street, Chatham,
Kent, ME4**

Wards
Helping you move forwards

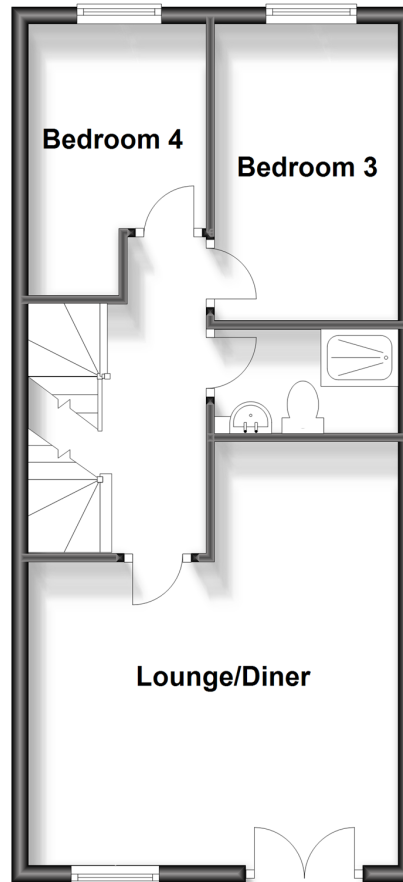
Ground Floor

Approx. 43.4 sq. metres (467.6 sq. feet)



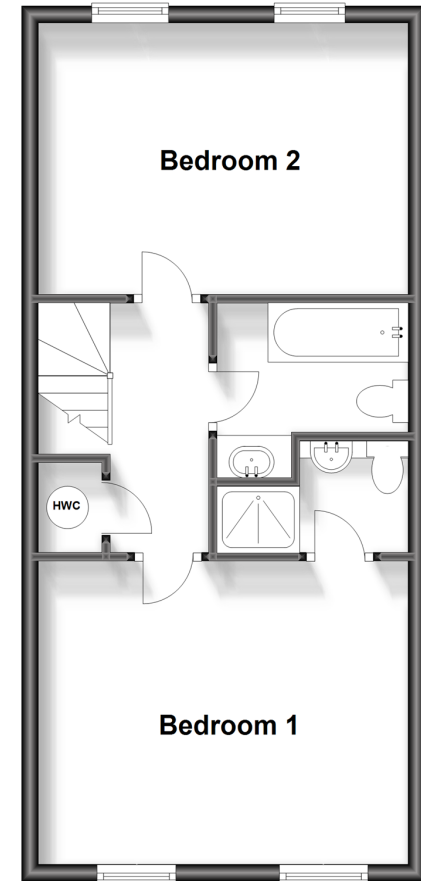
First Floor

Approx. 44.0 sq. metres (473.4 sq. feet)



Second Floor

Approx. 44.0 sq. metres (473.4 sq. feet)



Accommodation

GROUND FLOOR

Entrance Hall
Kitchen/Breakfast Room: 14'6 x 12'3 (4.42m x 3.74m)
Downstairs Cloakroom
Integral Garage: 16'9 x 9'9 (5.11m x 2.97m)

FIRST FLOOR

Landing
Lounge/Diner: 16'9 x 14'3 (5.11m x 4.35m)
Bedroom 3: 11'5 x 7'4 (3.48m x 2.24m)
Bedroom 4: 10'4 x 6'10 (3.15m x 2.08m)
Shower Room

SECOND FLOOR

Landing
Bedroom 1: 14'6 x 11'9 (4.42m x 3.58m)
En-suite Shower Room
Bedroom 2: 14'6 x 10'8 (4.42m x 3.25m)
Bathroom

OUTSIDE

Driveway
Rear Garden



Main features

- Modern town house in excellent condition
- Downstairs cloakroom, bathroom, shower room and en-suite shower room
- Great sized lounge/diner to entertain and separate kitchen/breakfast room
- Brilliant location for a choice local schools and local shops within walking distance
- Excellent choice for a family looking for space they can grow into



Nearest Schools

Primary Schools: Phoenix Junior Academy 0.1 miles, All Saints C of E Primary, Chatham 0.2 miles, New Road School and Nursery Unit 0.2 miles

Secondary Schools: Victory Academy 0.3 miles, Brompton



Transport Information

Train Stations: Chatham 0.6 miles, Gillingham 1.1 miles, Rochester 1.1 miles



Address

Ruth Street, Chatham, Kent, ME4



Directions

For directions to this property please contact us.



Wards
Helping you move forwards

Call Chatham Branch 01634 841243 ■ wardsofkent.co.uk



- Legal advice should be taken to verify fixtures/fittings, planning, alterations and/or lease details
- Appliances & services are untested, dimensions are approximate and floor plans are not to scale
- Through a Homewise Home For Life Plan people aged 60+ can secure this property for up to 59% less, by purchasing a Lifetime Lease.



10435337/20231019/RC/BC