



Price
£350,000

Freehold

3x  1x  1x 

**Magpie Hall Road,
Chatham, Kent, ME4**

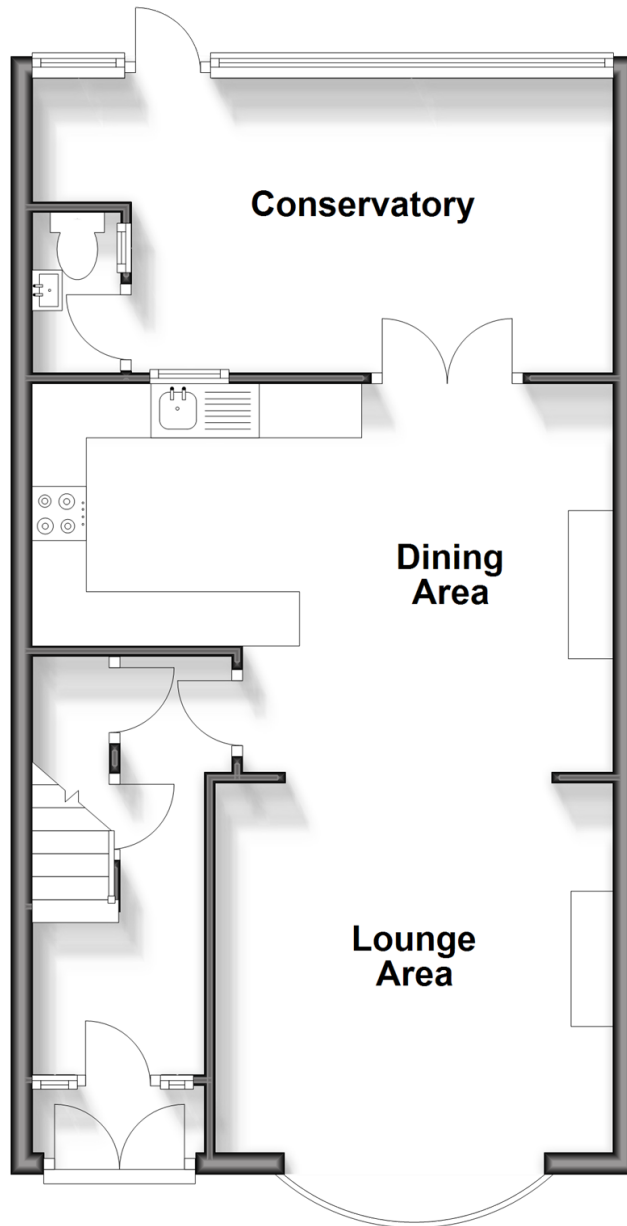
OVER 60?

Secure this property
for up to **59% less!**

Wards
Helping you move forwards

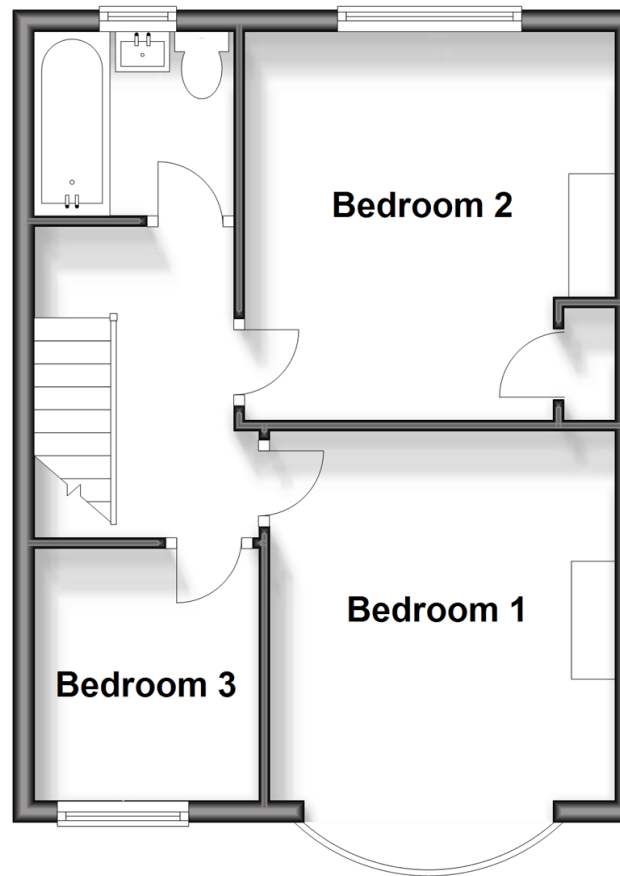
Ground Floor

Approx. 53.6 sq. metres (577.3 sq. feet)



First Floor

Approx. 38.4 sq. metres (413.7 sq. feet)



Accommodation

GROUND FLOOR

Entrance Porch

Hallway

Lounge Area: 12'0 x 11'1 (3.66m x 3.38m)

Dining Area: 11'9 x 11'3 (3.58m x 3.43m)

Kitchen: 11'8 x 5'10 (3.56m x 1.78m)

Conservatory: 18'7 x 9'9 (5.67m x 2.97m)

Downstairs Cloakroom

FIRST FLOOR

Landing

Bedroom 1: 11'1 x 10'10 (3.38m x 3.30m)

Bedroom 2: 11'8 x 11'2 (3.56m x 3.41m)

Bedroom 3 : 7'7 x 6'4 (2.31m x 1.93m)

Bathroom

OUTSIDE

Front Garden

Driveway

Rear Garden



Main features

- Beautiful 1930's end of terrace house in a prime location
- Family home in brilliant condition throughout
- Excellent social space with open plan living/dining and kitchen areas
- Addition of conservatory for extra living space
- Perfect location for popular local schools and opposite green at Coney Banks



Nearest Schools

Primary Schools: Phoenix Junior Academy 0.9 miles, New Road School and Nursery Unit 0.9 miles

Secondary Schools: Victory Academy 0.4 miles, Holcombe Grammar School 0.6 miles

Transport Information

Train Stations: Chatham 1.7 miles, Rochester 2.3 miles, Cuxton 2.8 miles

Address

Magpie Hall Road, Chatham, Kent, ME4

Directions

For directions to this property please contact us.





Wards
Helping you move forwards

Call Chatham Branch 01634 841243 ■ wardsofkent.co.uk



■ If buying to let, the energy rating will need to be improved to at least 'E' rating before you can let the property
■ Appliances & services are untested, dimensions are approximate and floor plans are not to scale

■ Legal advice should be taken to verify fixtures/fittings, planning, alterations and/or lease details
■ Through a Homewise Home For Life Plan people aged 60+ can secure this property for up to 59% less, by purchasing a Lifetime Lease.

10435353/20240226/RC/BC