



**OVER 60?**

Secure this property  
for up to **59% less!**

**Price**  
**£215,000**

**Freehold**

3x  1x  2x 

**Ingle Road, Chatham,  
Kent, ME4**

*Wards*  
Helping you move forwards

## Main features

- End of terrace Victorian house with 3 separate bedrooms
- Good sized lounge/diner
- Great choice for a first time buyer looking for a home they can make their own
- Potential buy to let investment
- Walking distance to town, railway station and local schools

## Accommodation

### GROUND FLOOR

Entrance Porch

Hallway

Lounge/Diner: 23'4 x 10'3 (7.12m x 3.13m)

Kitchen: 9'10 x 7'11 (3.00m x 2.41m)

Rear Lobby

Bathroom

### SPLIT LEVEL FIRST FLOOR

Landing

Bedroom 1: 12'3 x 9'11 (3.74m x 3.02m)

Bedroom 2: 13'3 x 8'4 (4.04m x 2.54m)

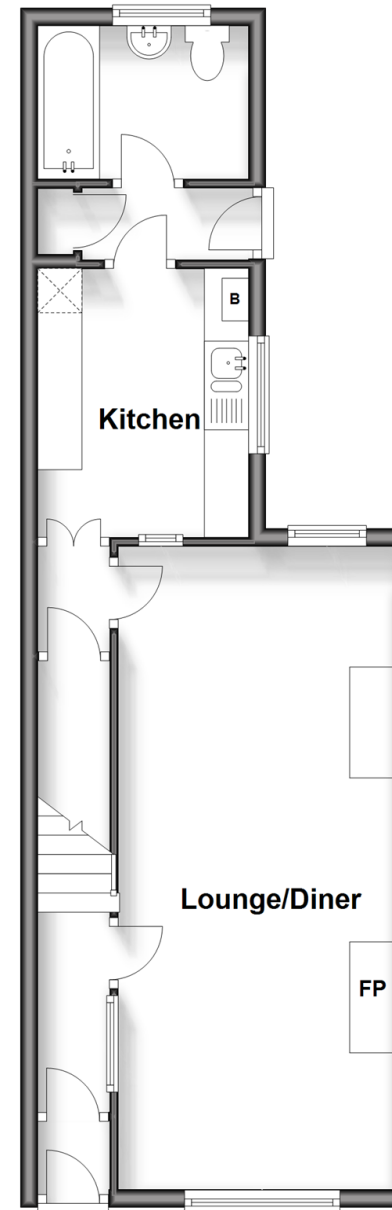
Bedroom 3: 9'11 x 7'11 (3.02m x 2.41m)

### OUTSIDE

Rear Garden

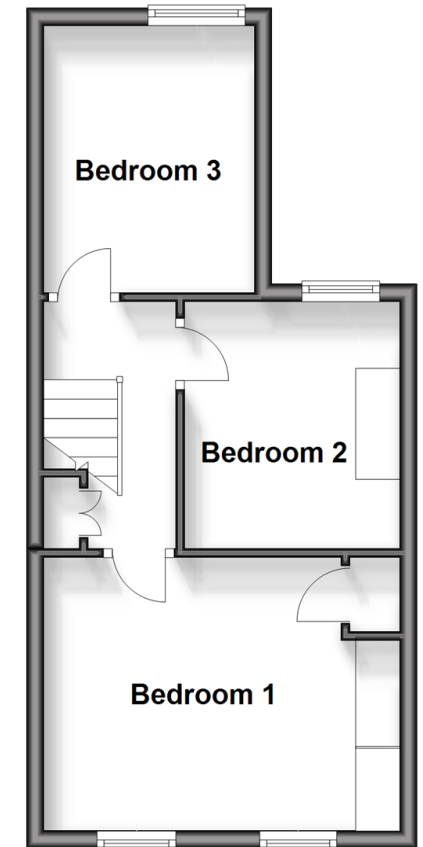
### Ground Floor

Approx. 43.2 sq. metres (465.5 sq. feet)



### Split Level First Floor

Approx. 31.5 sq. metres (338.7 sq. feet)



**Call Chatham - 01634 841243 ■ [wardsofkent.co.uk](http://wardsofkent.co.uk)**

■ Legal advice should be taken to verify fixtures/fittings, planning, alterations and/or lease details  
■ Through a Homewise Home For Life Plan people aged 60+ can secure this property for up to 59% less, by purchasing a Lifetime Lease.

■ Appliances & services are untested, dimensions are approximate and floor plans are not to scale