



OVER 60?

Secure this property
for up to **59% less!**

Price

£240,000

Freehold

3x  1x  1x 

**Ingle Road, Chatham,
Kent, ME4**

Wards
Helping you move forwards



Main features

- Victorian terraced house with 3 separate bedrooms
- Excellent condition throughout with beautiful modern shower room
- Superb living space with large lounge/diner
- Perfect first time buy
- Walking distance to town, railway station and local schools

Accommodation

SPLIT LEVEL GROUND FLOOR

Entrance Porch

Lounge/Diner: 23'8 x 13'3 (7.22m x 4.04m)

Kitchen: 9'10 x 7'11 (3.00m x 2.41m)

Shower Room

SPLIT LEVEL FIRST FLOOR

Landing

Bedroom 1: 11'4 x 9'10 (3.46m x 3.00m)

Bedroom 2: 13'4 x 8'7 (4.07m x 2.62m)

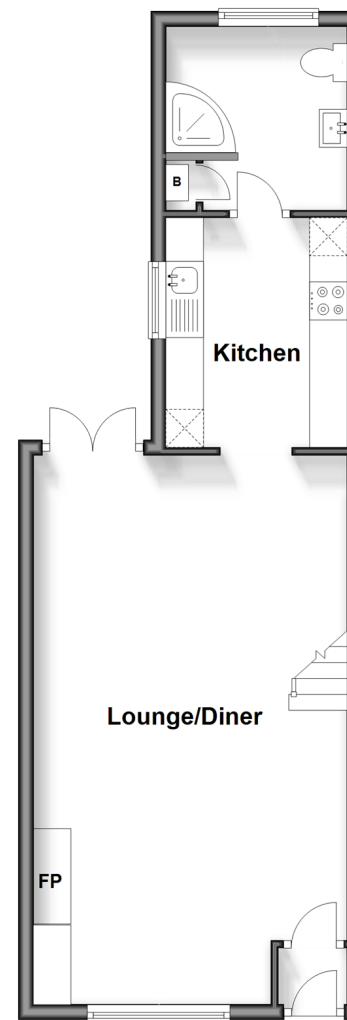
Bedroom 3: 9'10 x 7'11 (3.00m x 2.41m)

OUTSIDE

Rear Garden

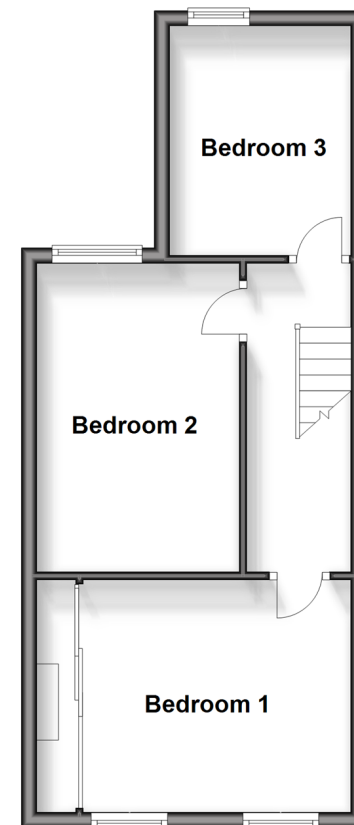
Split Level Ground Floor

Approx. 43.7 sq. metres (470.2 sq. feet)



Split Level First Floor

Approx. 37.6 sq. metres (405.0 sq. feet)



Call Chatham - 01634 841243 ■ wardsofkent.co.uk

- Legal advice should be taken to verify fixtures/fittings, planning, alterations and/or lease details
- Appliances & services are untested, dimensions are approximate and floor plans are not to scale
- Through a Homewise Home For Life Plan people aged 60+ can secure this property for up to 59% less, by purchasing a Lifetime Lease.



10435371/20240113/AP/BC