



OVER 60?

Secure this property
for up to **59% less!**

Price

£385,000

Freehold

3x  1x  1x 

**The Chase, Chatham,
Kent, ME4**

Wards
Helping you move forwards



Main features

- End terrace house in immaculate condition
- Driveway parking and attractive low maintenance rear garden
- Wonderful living space for entertaining
- Brilliant location for popular local schools
- Excellent choice for those upgrading to a family home

Accommodation

GROUND FLOOR

Entrance Hallway

Living Area: 14'7 x 11'5 (4.45m x 3.48m)

Kitchen/Dining Area: 17'0 x 13'3 (5.19m x 4.04m)

FIRST FLOOR

Landing

Bedroom 1: 13'5 x 11'1 (4.09m x 3.38m)

Bedroom 2: 11'3 x 10'4 (3.43m x 3.15m)

Bedroom 3: 6'11 x 5'9 (2.11m x 1.75m)

Bathroom

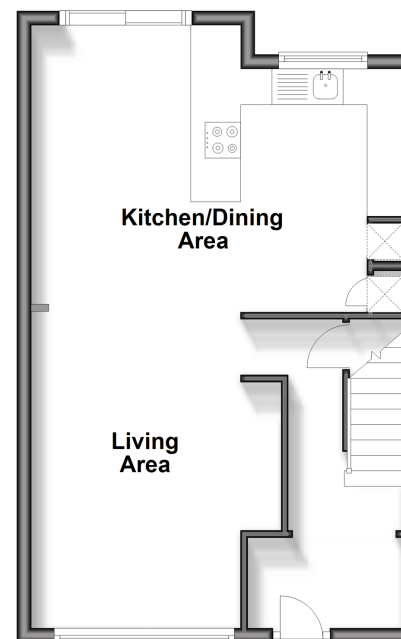
OUTSIDE

Driveway

Rear Garden

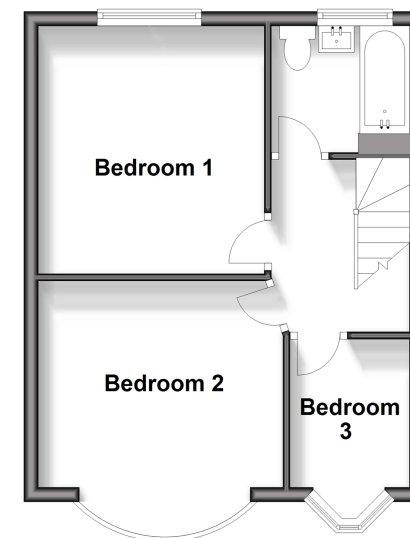
Ground Floor

Approx. 42.5 sq. metres (457.1 sq. feet)



First Floor

Approx. 34.0 sq. metres (366.0 sq. feet)



Call Chatham - 01634 841243 ■ wardsofkent.co.uk

■ Legal advice should be taken to verify fixtures/fittings, planning, alterations and/or lease details
 ■ Through a Homewise Home For Life Plan people aged 60+ can secure this property for up to 59% less, by purchasing a Lifetime Lease.

■ Appliances & services are untested, dimensions are approximate and floor plans are not to scale