



**OVER 60?**

Secure this property  
for up to **59% less!**

**Price**

**£185,000**

**Leasehold**

2x  1x  1x 

**Charlesworth House,  
Balfour Road, Chatham,  
Medway, ME4**

*Wards*  
Helping you move forwards





## Main features

- 2 bedroom second floor flat
- Allocated parking space at the entry to the building
- 1 mile from the station perfect for commuters
- Ideal for first time buyers and investors
- Close to the town centre, train station and local amenities

## Accommodation

### SECOND FLOOR

#### Entrance Hallway

Lounge: 15'10 x 11'5 (4.83m x 3.48m)

Kitchen: 8'0 x 6'6 (2.44m x 1.98m)

Bedroom 1: 10'5 x 7'6 (3.18m x 2.29m)

Bedroom 2: 10'5 x 6'6 (3.18m x 1.98m)

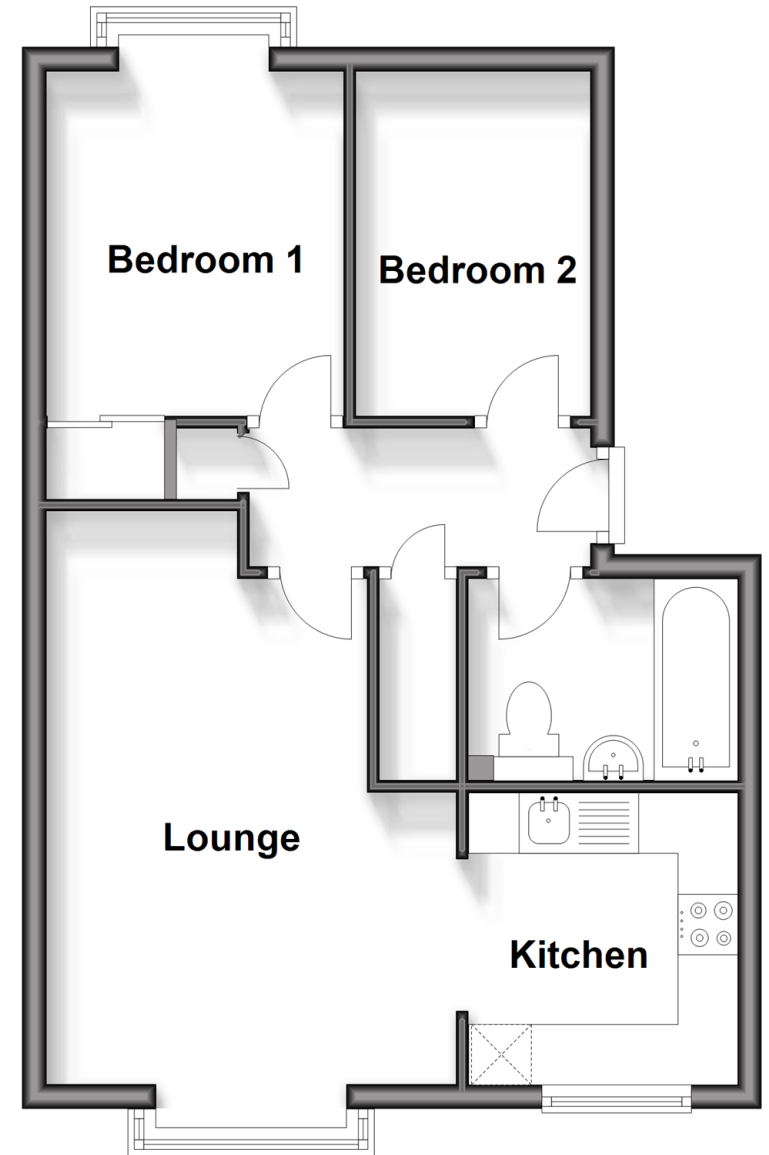
Bathroom: 6'6 x 5'10 (1.98m x 1.78m)

### OUTSIDE

Allocated Parking

## Second Floor

Approx. 43.9 sq. metres (472.9 sq. feet)



**Call Chatham - 01634 841243 ■ [wardsofkent.co.uk](http://wardsofkent.co.uk)**

- Legal advice should be taken to verify fixtures/fittings, planning, alterations and/or lease details
- Appliances & services are untested, dimensions are approximate and floor plans are not to scale
- Through a Homewise Home For Life Plan people aged 60+ can secure this property for up to 59% less, by purchasing a Lifetime Lease.



10435413/20240302/AP/RC