



OVER 60?

Secure this property
for up to **59% less!**

Price
£180,000

Freehold

2x  1x  2x 

**East Street, Chatham,
Kent, ME4**

Wards
Helping you move forwards



Main features

- Victorian terraced house
- Ready to move in but with potential to improve
- Upstairs bathroom and additional cloakroom on ground floor
- Excellent choice for a first time buyer or an investor
- Great location for local schools and access to road and rail links

Accommodation

SPLIT LEVEL GROUND FLOOR

Lounge: 13'2 x 10'3 (4.02m x 3.13m)
 Dining Room: 13'3 x 10'11 (4.04m x 3.33m)
 Kitchen: 10'1 x 7'2 (3.08m x 2.19m)
 Rear Lobby
 Downstairs Cloakroom

BASEMENT

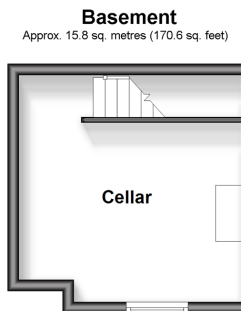
Cellar

FIRST FLOOR

Landing
 Bedroom 1: 13'3 x 10'11 (4.04m x 3.33m)
 Bedroom 2: 13'3 x 10'3 (4.04m x 3.13m)
 Bathroom

OUTSIDE

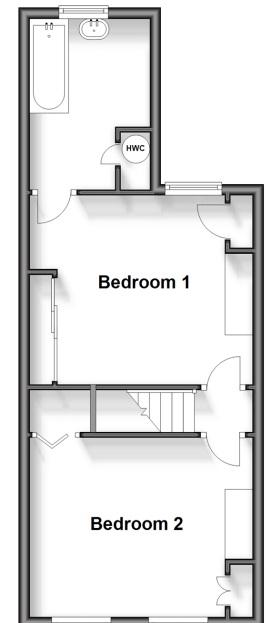
Rear Garden



Split Level Ground Floor
 Approx. 41.1 sq. metres (442.2 sq. feet)



Split Level First Floor
 Approx. 37.0 sq. metres (398.5 sq. feet)



Call Chatham - 01634 841243 ■ wardsofkent.co.uk

■ Legal advice should be taken to verify fixtures/fittings, planning, alterations and/or lease details
 ■ Through a Homewise Home For Life Plan people aged 60+ can secure this property for up to 59% less, by purchasing a Lifetime Lease.

■ Appliances & services are untested, dimensions are approximate and floor plans are not to scale