



Guide Price
£500,000

Freehold

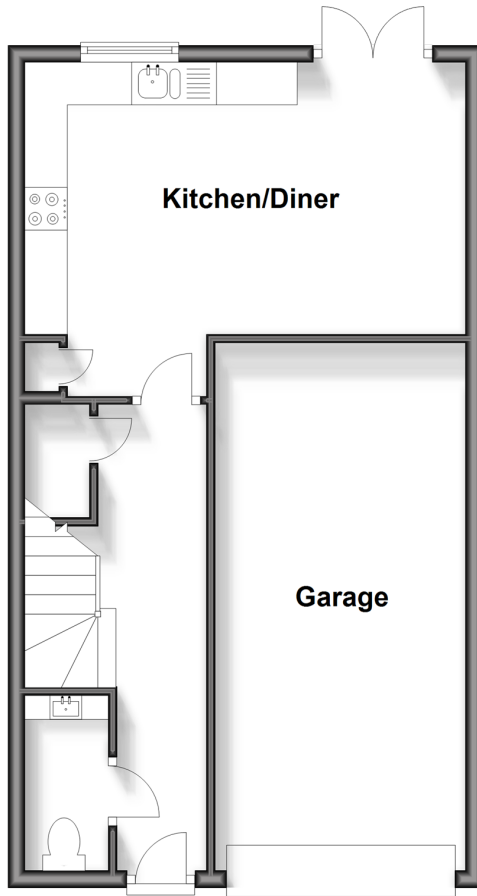
4x  3x  2x 

**Portside View, Chatham,
Kent, ME4**

Wards
Helping you move forwards

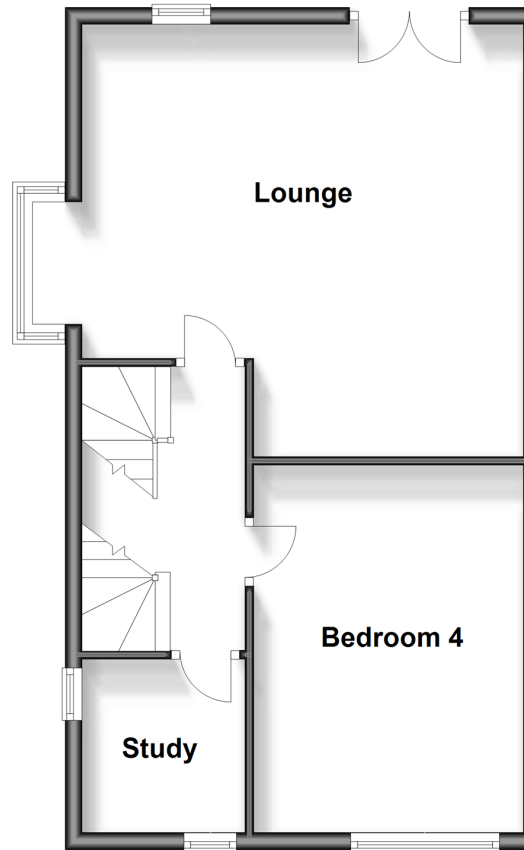
Ground Floor

Approx. 49.1 sq. metres (528.8 sq. feet)



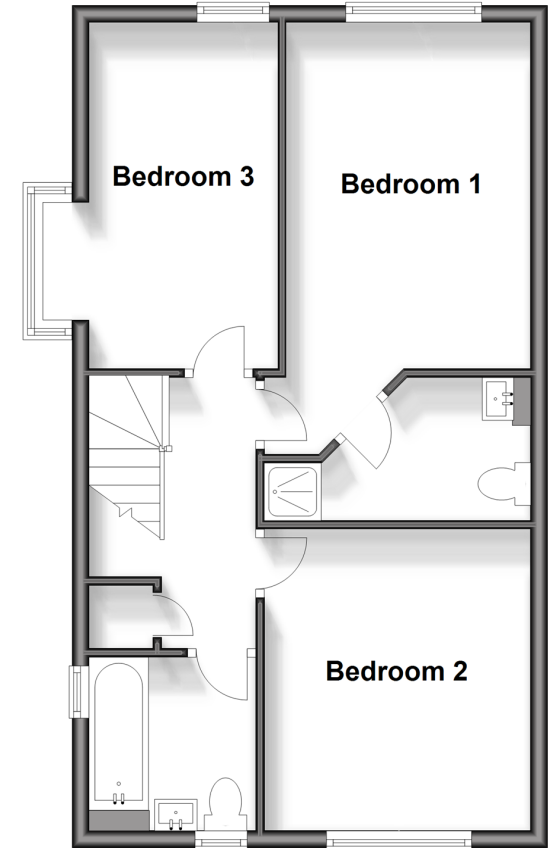
First Floor

Approx. 49.5 sq. metres (533.3 sq. feet)



Second Floor

Approx. 49.5 sq. metres (532.8 sq. feet)



Accommodation

GROUND FLOOR

Entrance Hallway

Cloak Room

Kitchen/Diner: 17'1 x 10'4 (5.21m x 3.15m)

FIRST FLOOR

Landing

Lounge: 17'2 x 16'5 (5.24m x 5.01m)

Bedroom 4: 14'2 x 10'4 (4.32m x 3.15m)

Study/Bedroom 5: 6'9 x 6'5 (2.06m x 1.96m)

SECOND FLOOR

Landing

Bedroom 1: 12'10 x 10'5 (3.91m x 3.18m)

En-suite Shower Room

Bedroom 2: 11'7 x 10'5 (3.53m x 3.18m)

Bedroom 3: 9'6 x 6'6 (2.90m x 1.98m)

Bathroom

OUTSIDE

Front Garden

Driveway

Garage

Rear Garden



Main features

- Immaculately presented semi-detached town house with stunning waterside views
- Fantastic living space and a versatile layout, to suit your family
- Beautiful Japanese inspired rear garden
- Excellent choice for a family or professional couple
- Envious riverside location in a popular modern development.



Nearest Schools

Primary Schools: St Mary's Island C of E (Aided) Primary 0.4 miles, Burnt Oak Primary 0.6 miles, Skinner Street Primary 0.8 miles

Secondary Schools: Brompton Academy 1.2 miles, The



Transport Information

Train Stations: Gillingham 1.0 miles, Chatham 1.6 miles, Rochester 1.7 miles



Address

Portside View, Chatham, Kent, ME4



Directions

For directions to this property please contact us.



Call Chatham Branch 01634 841243 ■ wardsofkent.co.uk



■ Legal advice should be taken to verify fixtures/fittings, planning, alterations and/or lease details ■ Appliances & services are untested, dimensions are approximate and floor plans are not to scale



10435463/20240503/BC/BC