



Price
£120,000

Leasehold

1x  1x  1x 

**Fort Pitt Street,
Chatham, Kent, ME4**

OVER 60?

Secure this property
for up to **59% less!**

Wards
Helping you move forwards



Main features

- Ground floor apartment with direct access to gardens
- Great sized living space, bedroom and allocated parking
- Recommended for cash buyers; due to current lease length
- Perfect for downsizing/investment
- Within a short walk to Chatham Railway Station and town centre

Accommodation

GROUND FLOOR

Entrance Hallway

Lounge/Diner: 19'3 x 9'0 (5.87m x 2.75m)

Kitchen: 9'1 x 6'7 (2.77m x 2.01m)

Bedroom: 12'8 x 10'2 (3.86m x 3.10m)

Bathroom

OUTSIDE

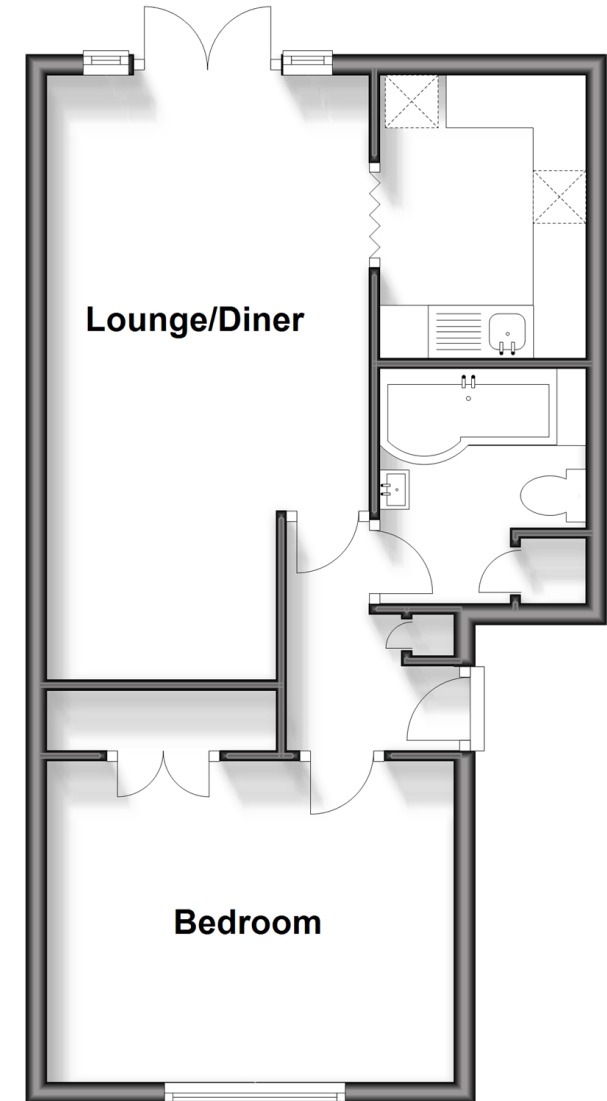
Patio Garden

Communal Gardens

Allocated Parking Space

Ground Floor

Approx. 43.3 sq. metres (465.6 sq. feet)



Call Chatham - 01634 841243 ■ wardsof Kent.co.uk

- Legal advice should be taken to verify fixtures/fittings, planning, alterations and/or lease details
- Appliances & services are untested, dimensions are approximate and floor plans are not to scale
- Through a Homewise Home For Life Plan people aged 60+ can secure this property for up to 59% less, by purchasing a Lifetime Lease.

