



OVER 60?

Secure this property
for up to **59% less!**

Price

£175,000

Leasehold

1x  1x  1x 

**Elysium House, Redvers
Road, Chatham, Kent,
ME4**

Wards
Helping you move forwards



Main features

- Modern second floor flat with allocated parking
- Excellent condition through, ready to move straight into
- Brilliant, social space in kitchen/living area
- Perfect for a professional couple or someone looking to downsize, with lift access
- Walking distance to town centre, with access to railway station

Accommodation

SECOND FLOOR

Entrance Hallway

Kitchen/Living Area: 18'7 x 17'10 (5.67m x 5.44m)

Bedroom : 11'4 x 11'0 (3.46m x 3.36m)

Bathroom

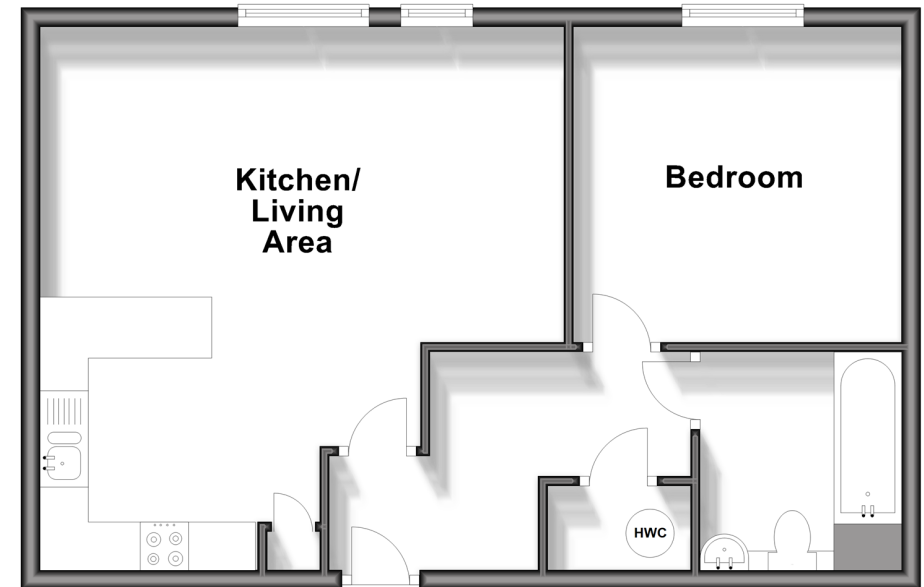
OUTSIDE

Communal Gardens

Allocated Parking Space

Second Floor

Approx. 50.3 sq. metres (541.4 sq. feet)



Call Chatham - 01634 841243 ■ wardsofkent.co.uk

■ Legal advice should be taken to verify fixtures/fittings, planning, alterations and/or lease details
 ■ Through a Homewise Home For Life Plan people aged 60+ can secure this property for up to 59% less, by purchasing a Lifetime Lease.

■ Appliances & services are untested, dimensions are approximate and floor plans are not to scale



10435494/20240508/BC/BC