



Price
£240,000

Freehold

3x  1x  2x 

Upper Luton Road,
Chatham, Kent, ME5

OVER 60?

Secure this property
for up to **59% less!**

Wards
Helping you move forwards



Split Level Ground Floor

Approx. 41.3 sq. metres (444.7 sq. feet)

Main features

- **Well presented 1930's terraced house**
- **Great living and entertaining space with lounge and separate dining room**
- **Beautiful sunny aspect rear garden**
- **Perfect for first time buyers, a professional couple or young family**
- **Excellent location for access to local schools, shops and transport links**

Accommodation

SPLIT LEVEL GROUND FLOOR

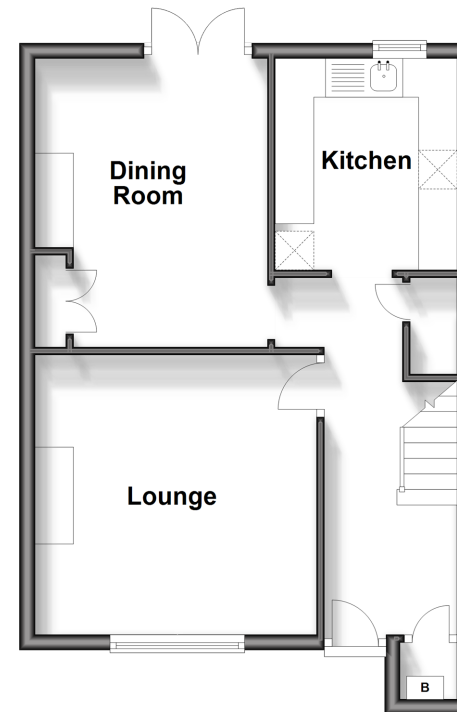
Entrance Porch
Hallway
Lounge: 12'3 x 12'2 (3.74m x 3.71m)
Dining Room: 12'2 x 10'3 (3.71m x 3.13m)
Kitchen: 9'0 x 7'7 (2.75m x 2.31m)

FIRST FLOOR

Landing
Bedroom 1: 12'2 x 12'2 (3.71m x 3.71m)
Bedroom 2: 12'2 x 10'8 (3.71m x 3.25m)
Bedroom 3: 9'0 x 7'4 (2.75m x 2.24m)
Bathroom

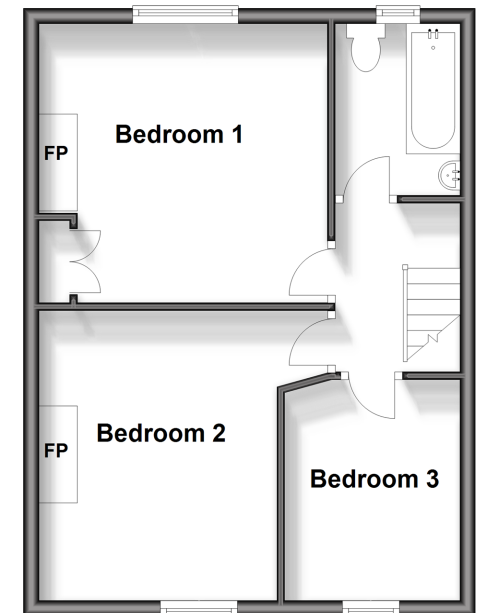
OUTSIDE

Front Garden
Rear Garden



First Floor

Approx. 40.7 sq. metres (438.1 sq. feet)



Call Chatham - 01634 841243 ■ wardsofkent.co.uk

■ Legal advice should be taken to verify fixtures/fittings, planning, alterations and/or lease details
■ Through a Homewise Home For Life Plan people aged 60+ can secure this property for up to 59% less, by purchasing a Lifetime Lease.

■ Appliances & services are untested, dimensions are approximate and floor plans are not to scale



10435500/20240423/BC/BC